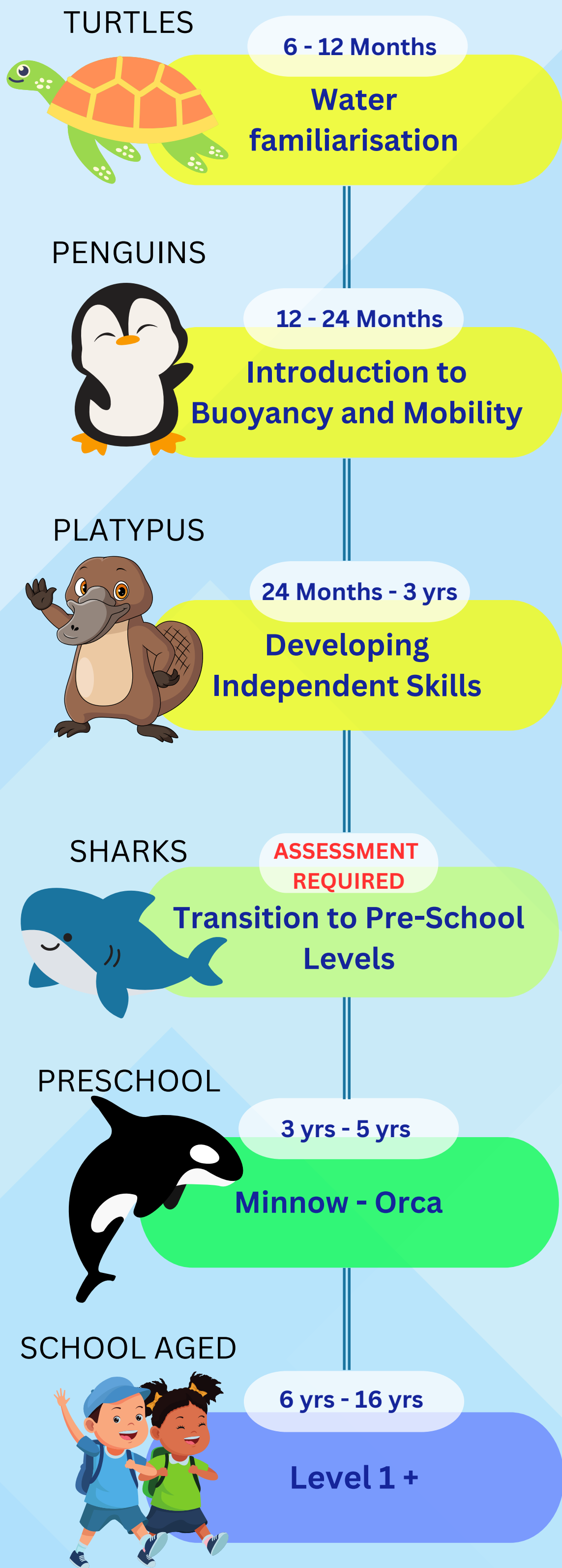
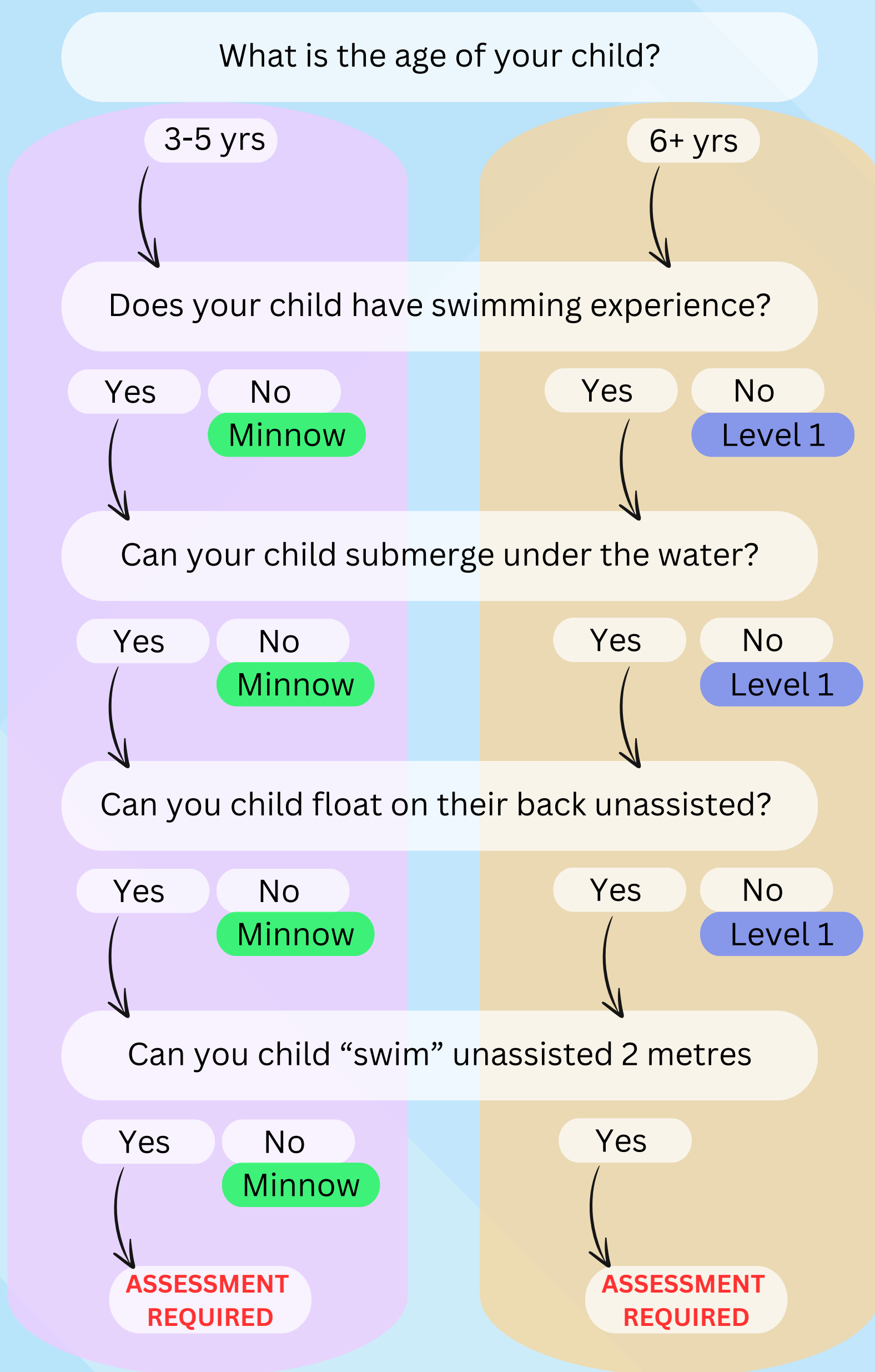


How to determine your child's swim level for enrolment in Learn to Swim



If your child is aged between **6 months - 24 months** please enrol them in the age appropriate infant level highlighted by the yellow bubbles on the left.

For 3+ yrs please use the diagram below to help determine the best level for your child to be enrolled into. If you are still unsure, please contact programsupervisors@stirling.wa.gov.au



Terry Tyzack Aquatic Centre
62 Alexander Drive, Inglewood, WA 6052
08 9205 7720

Scarborough Beach Pool
171 The Esplanade, Scarborough WA 6019
08 9205 7560

Leisure Park Balga
109 Princess Rd, Balga WA 6061
08 9205 7340

