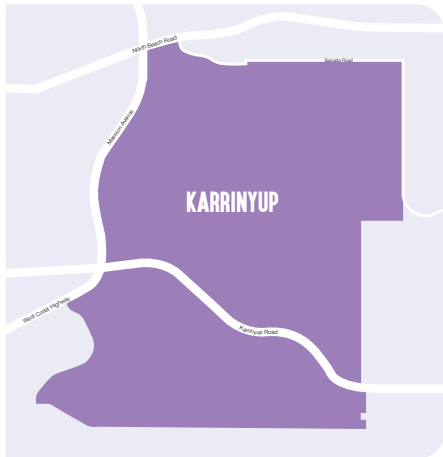


# City of Stirling Business Locations

## Karrinyup

**Karrinyup** derives its name from a local swamp Careniup, an Aboriginal word. Rapid growth began in 1957 and most houses are relatively modern. The suburb offers numerous parks and reserves for recreational facilities, including the Lake Karrinyup Country Club. The local population boasts low unemployment and high income levels. Karrinyup Shopping Centre attracts customers from a wide catchment area.



**Area 6.5 square km**  
Distance to CBD 14km

### LOCAL ECONOMY

The Karrinyup business location<sup>1</sup> contributes (2.6% of Stirling \$25.853 billion)

**\$678.3 million**

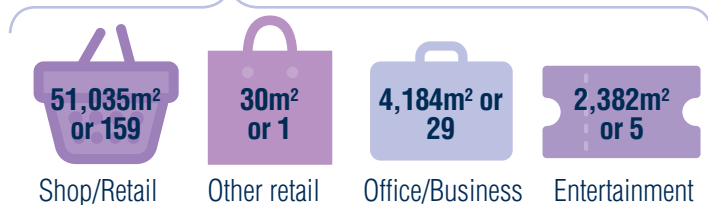
Total number of businesses **2,971<sup>2</sup>**

Retail Trade	<b>\$188.5 million</b>	(27.8%)
Financial and Insurance Services	<b>\$73 million</b>	(10.8%)
Transport, Postal and Warehousing	<b>\$65.5 million</b>	(9.7%)

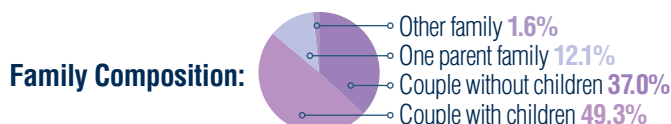
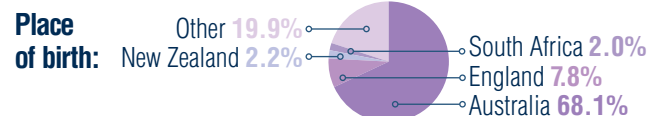
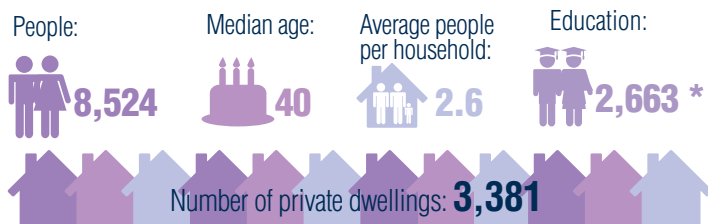
Construction	<b>521</b>	(17.5%)
Professional, Scientific and Technical Services	<b>531</b>	(17.9%)
Financial and Insurance Services	<b>292</b>	(9.8%)

### RETAIL AREA

**Karrinyup Shopping Area: Total 59,045m<sup>2</sup> or 211**



### POPULATION PROFILE



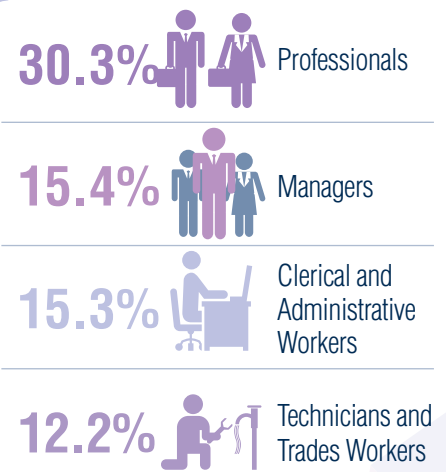
### EMPLOYMENT AND INCOME

Labour force: **4,213**



**3.5%** Unemployment rate

Occupations of people living in Osborne Park:



**Median weekly household income: \$1,791**

### OPPORTUNITIES

➔ The Karrinyup Shopping Centre provides the commercial focus for the suburb and offers a wide range of retail services. The approved Karrinyup Centre development proposal is valued at \$500 million. Increasing the retail and residential offering in the area from 64,000m<sup>2</sup> to approximately 114,000m<sup>2</sup> floor spaces.



\*Aged 15+ held tertiary qualifications in 2011 (of 6,750 = 39.4%).  
<sup>1</sup>Destination zones Karrinyup - Gwelup - Carine DZ 510891324, DZ 510891307, DZ 510891323.  
<sup>2</sup>As at 1 July 2016 Australian Business Register.