

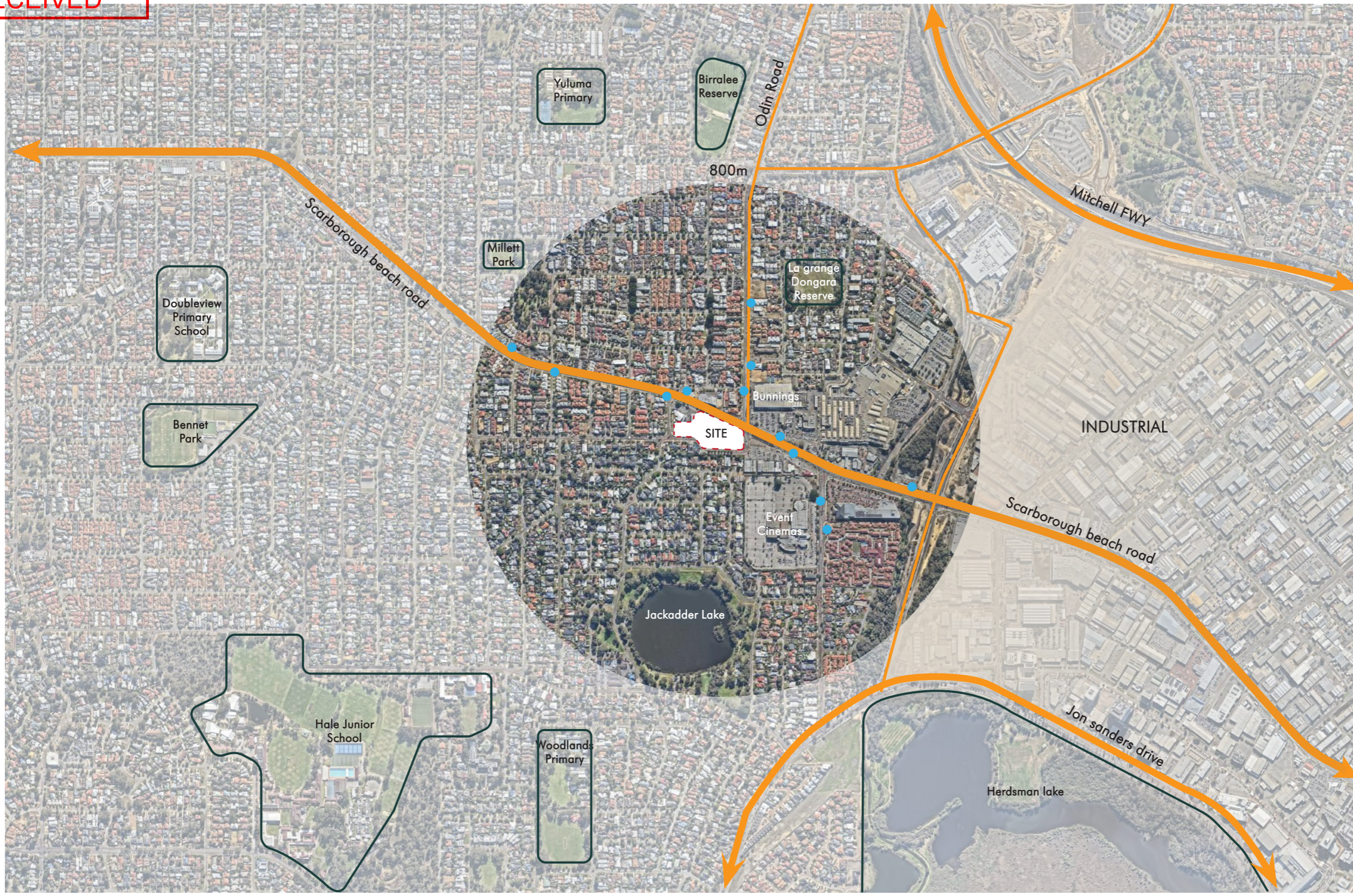
City of Stirling
9 September 2025
RECEIVED

Woodlands North

Development Application

place
fabric.

Rev C
19 08 2025

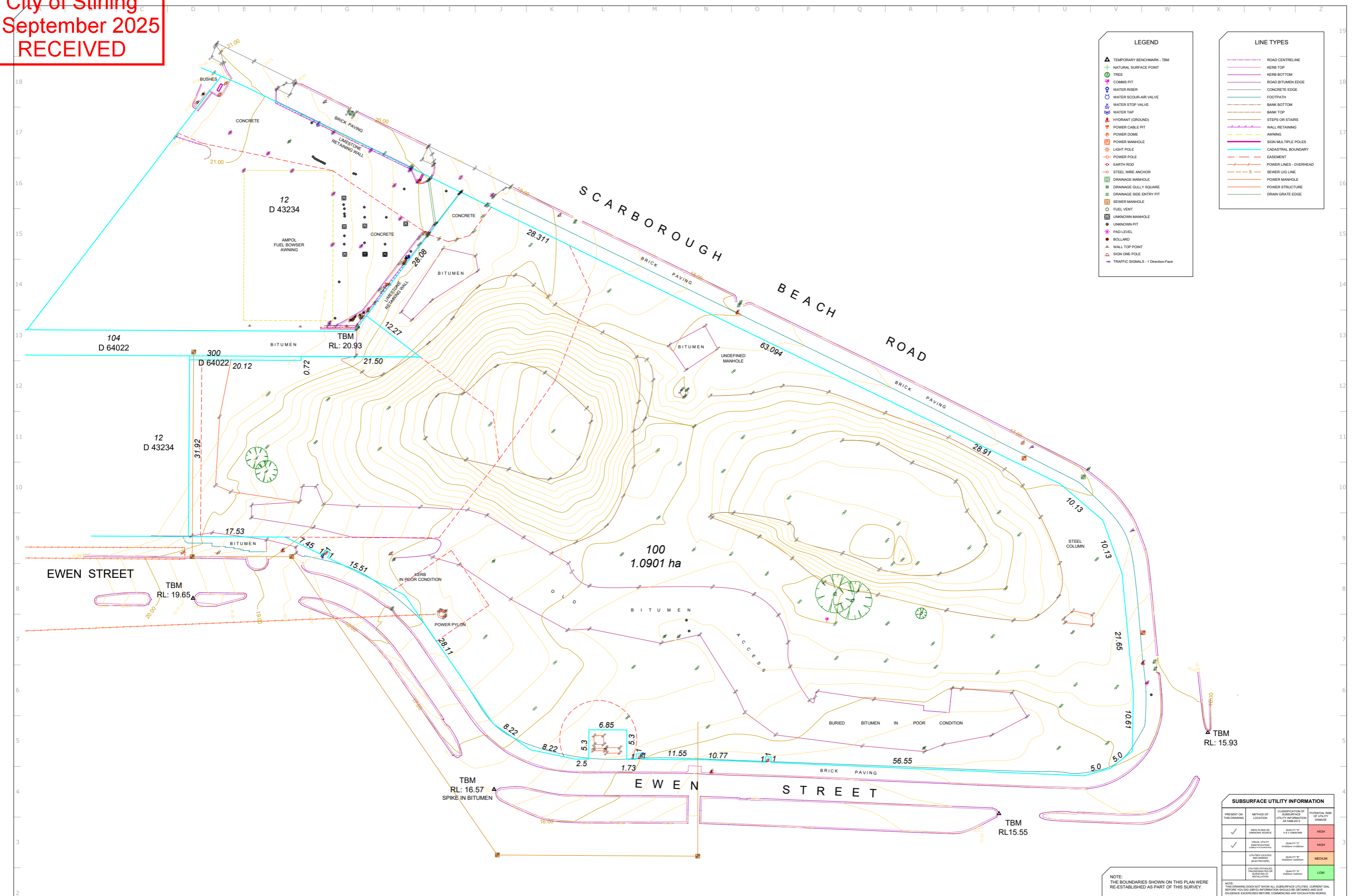


LEGEND

- Key Roads
- Bus stops



City of Stirling
 9 September 2025
 RECEIVED



LEGEND

- ▲ TEMPORARY BENCHMARK - TBM
- ⊕ NATURAL SURFACE POINT
- 🌳 TREE
- ⊙ COMMS PIT
- ⊙ WATER RISER
- ⊙ WATER SCOUR-AIR VALVE
- ⊙ WATER STOP VALVE
- ⊙ WATER TAP
- ⚡ HYDRANT (GROUND)
- ⊙ POWER CABLE PIT
- ⊙ POWER DOME
- ⊙ POWER MANHOLE
- ⊙ LIGHT POLE
- ⊙ POWER POLE
- ⊙ EARTH ROD
- ⊙ STEEL WIRE ANCHOR
- ⊙ DRAINAGE MANHOLE
- ⊙ DRAINAGE GULLY SQUARE
- ⊙ DRAINAGE SIDE ENTRY PIT
- ⊙ SEWER MANHOLE
- ⊙ FUEL VENT
- ⊙ UNKNOWN MANHOLE
- ⊙ UNKNOWN PIT
- ⊙ PAD LEVEL
- ⊙ BOLLARD
- ⊙ WALL TOP POINT
- ⊙ SIGN ONE POLE
- ⊙ TRAFFIC SIGNALS - 1 Direction-Face

LINE TYPES

- ROAD CENTRELINE
- KERB TOP
- KERB BOTTOM
- ROAD BITUMEN EDGE
- CONCRETE EDGE
- FOOTPATH
- BANK BOTTOM
- BANK TOP
- STEPS OR STAIRS
- AWNING
- WALL RETAINING
- SIGN MULTIPLE POLES
- CADASTRAL BOUNDARY
- EASEMENT
- POWER LINES - OVERHEAD
- SEWER LUG LINE
- POWER MANHOLE
- POWER STRUCTURE
- DRAIN GRATE EDGE

SUBSURFACE UTILITY INFORMATION

PRESENT ON THIS DRAWING	METHOD OF LOCATION	CLASSIFICATION OF SUBSURFACE UTILITY INFORMATION (AS PER SLS)	POTENTIAL RISK OF UTILITY DAMAGE
✓	LEVEL PLANS OR UNKNOWN SOURCE	QUALITY OF H & V DIMENSIONS	HIGH
✓	VISUAL UTILITY (CONCRETE, METAL, PVC, ETC.)	QUALITY OF H & V DIMENSIONS	HIGH
✓	UTILITIES LOCATED AND MARKED (ELECTRICAL)	QUALITY OF H & V DIMENSIONS	MEDIUM
✓	UTILITIES MARKED, TRACED/SIGHTED OR SIGHTED AT INSTALLATION	QUALITY OF H & V DIMENSIONS	LOW

NOTE:
 THE BOUNDARIES SHOWN ON THIS PLAN WERE RE-ESTABLISHED AS PART OF THIS SURVEY.

PHONE: 08 9457 7900
 EMAIL: INFO@RMSURVEYS.COM.AU
 WEBSITE: RMSURVEYS.COM.AU

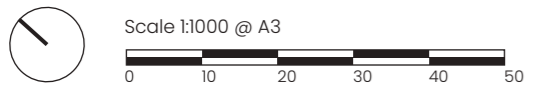
Scale 1:300
 ALL DISTANCES IN METRES
 PAPER SIZE A1

SURVEYOR	VERTICAL DATUM	CLIENT
JT	AHD	WINDSOR KNIGHT PROPERTIES
SURVEY DATE	HORIZONTAL DATUM	
27/06/2025	PCG94	

REV	DESCRIPTION	DRN	CKD	APP	DATE
1	ADDITIONAL SURVEY - LOT 12 D43234	AC	JT	ZH	09/07/2025
0	INITIAL ISSUE	TL	KB	KB	16/09/2022

FEATURE AND CONTOUR SURVEY
 LOT 100 on DP 64022
 365 SCARBOROUGH BEACH ROAD
 INNALOO

JOB No.	DRAWING No.	REV
WIND-EWEN	WIND-EWEN-DW-001	1



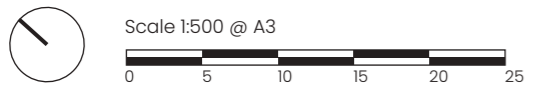
Boundary Information

Pg 4 Rev C

Woodlands North Development Application

08 2025

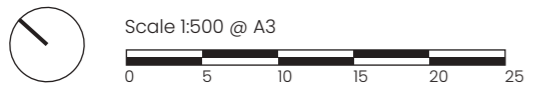


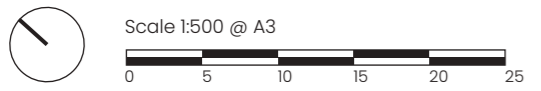


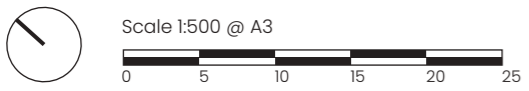


Tenancy Breakdown

Shops
Restaurants
Recreation - Private
Public Toilets
End of Trip
VT
Services









Local Characters/Themes

Pg 9

Rev C

Woodlands North Development Application

08 2025

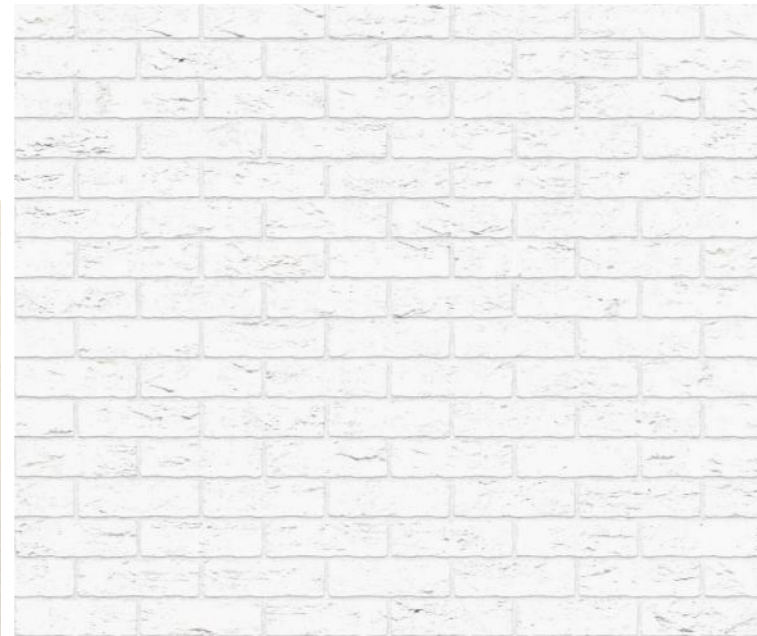




①



②



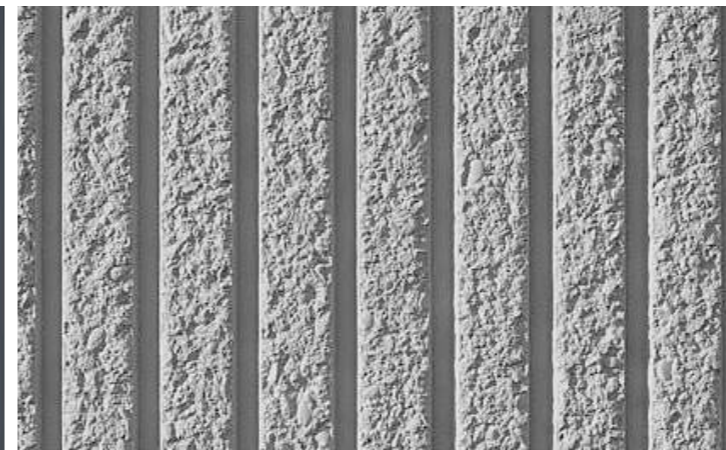
③



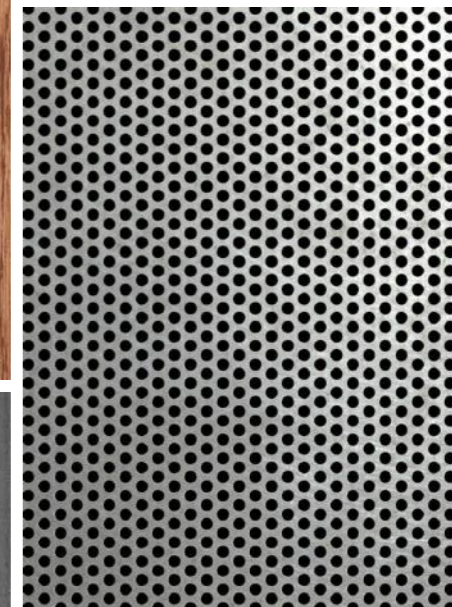
⑦



⑥



⑤



④

Material Legend

- ① Bronze Look Treatment
- ② Textured concrete/Masonry
- ③ Substitute Timber Cladding
- ④ Perforated Metal
- ⑤ Patterned Concrete
- ⑥ Vertical Cladding
- ⑦ Featured Concrete Masonary

Materiality

Pg 11

Rev C



North Elevation - A

North Elevation - B

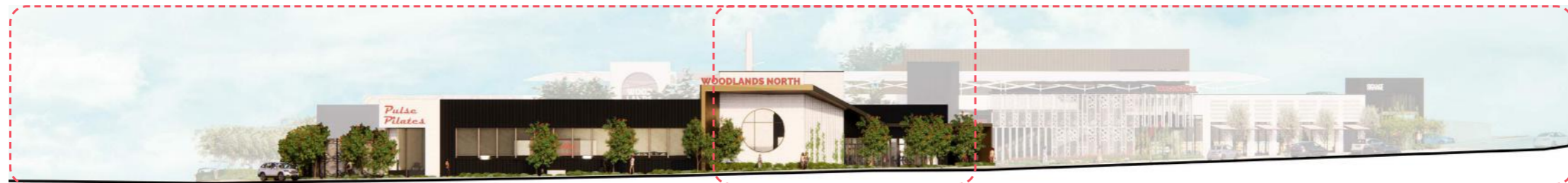
North Elevation - C



South Elevation - A

South Elevation - B

South Elevation - C



East Elevation - A

East Elevation - B



West Elevation - A

West Elevation - B

Elevations

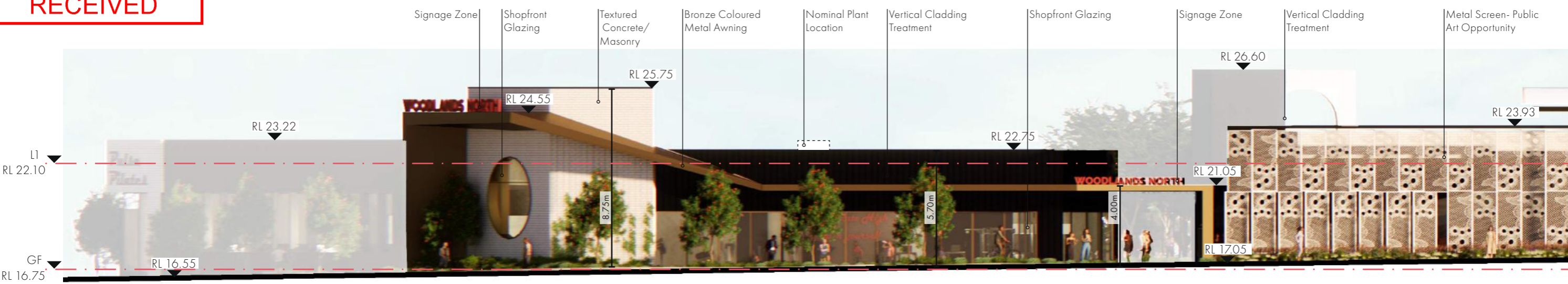
Pg 12

Rev C

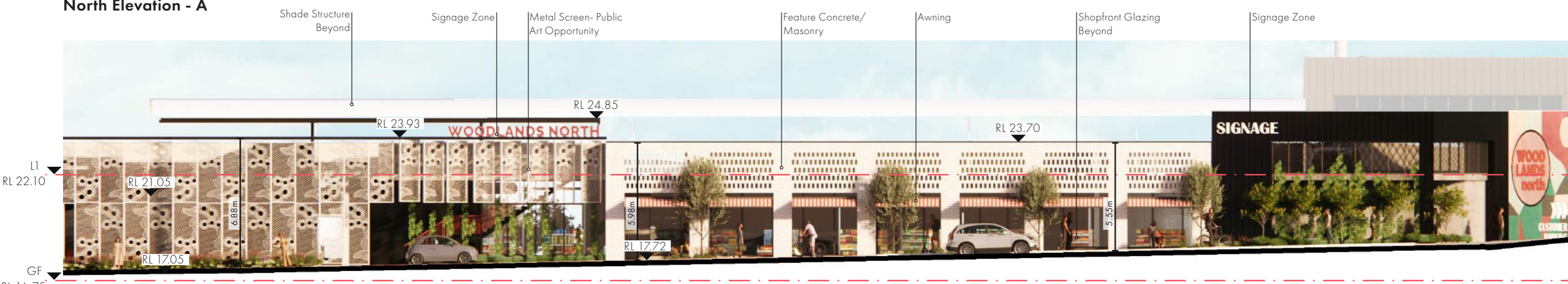
Woodlands North Development Application

08 2025

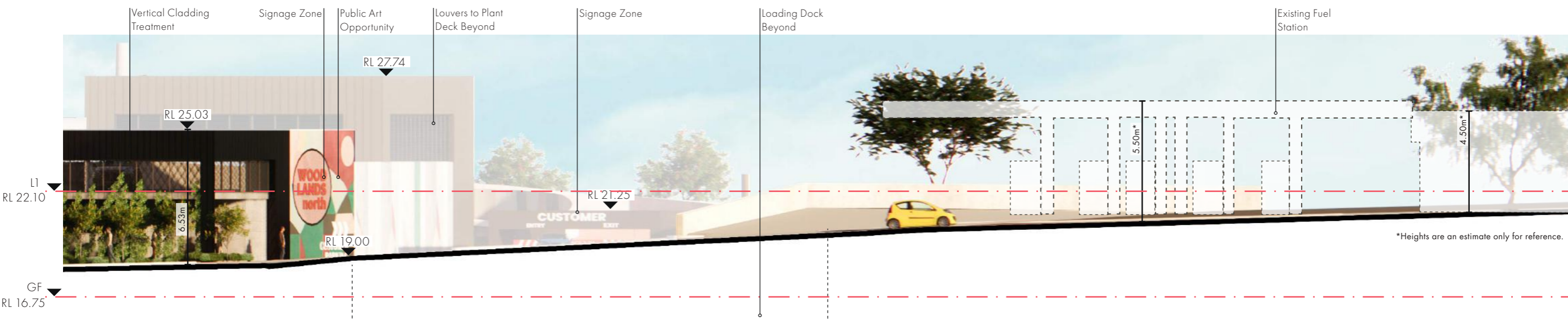




North Elevation - A



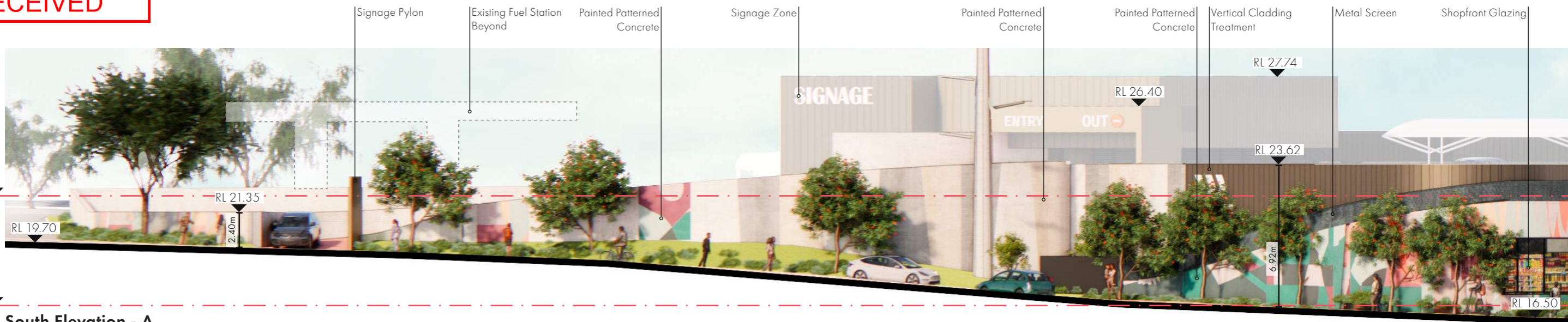
North Elevation - B



North Elevation - C

*Heights are an estimate only for reference.

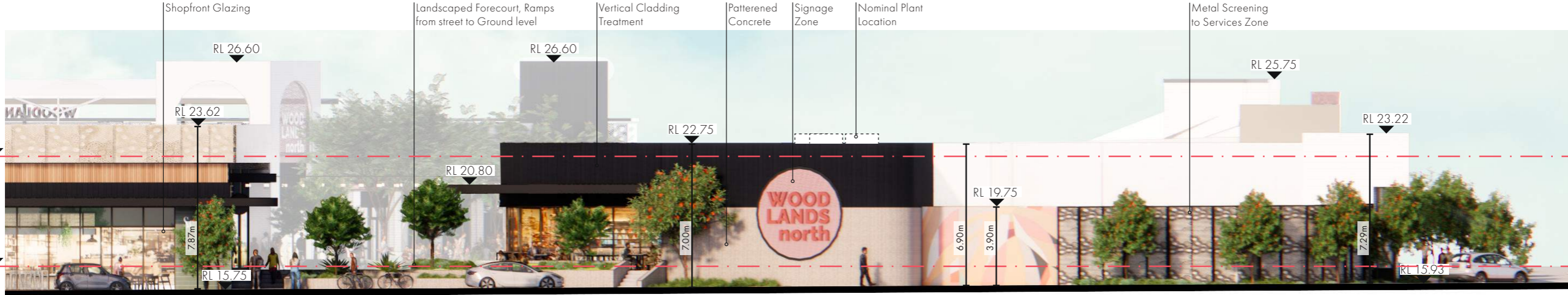




South Elevation - A

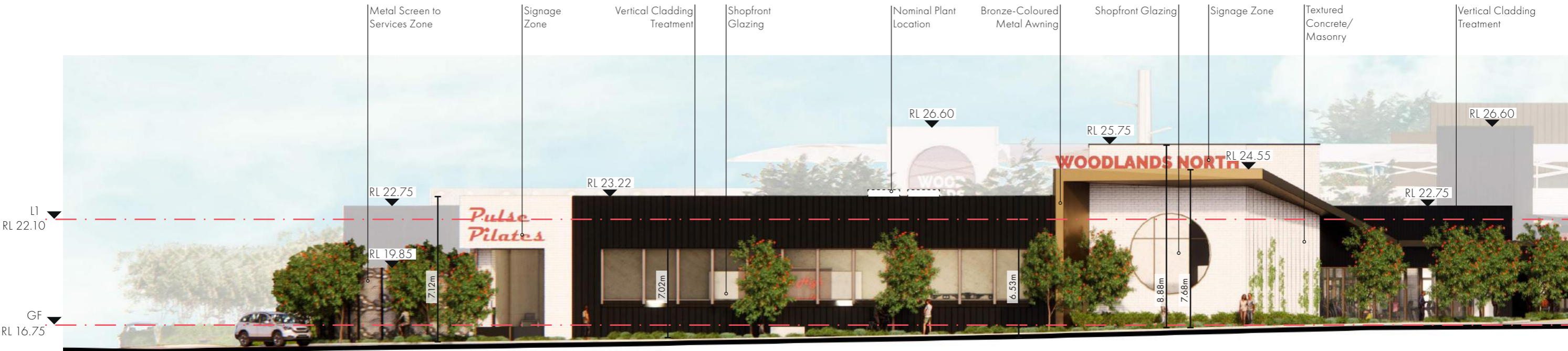


South Elevation - B

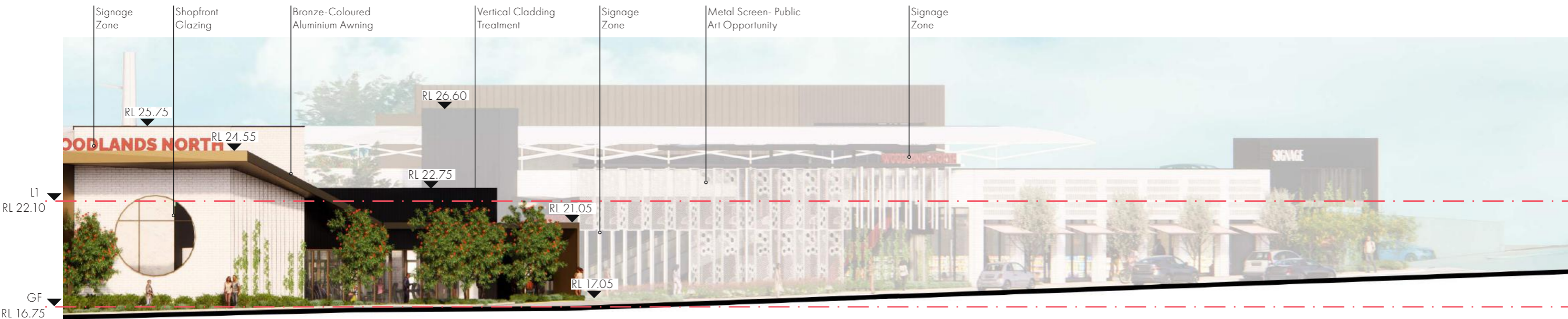


South Elevation - C

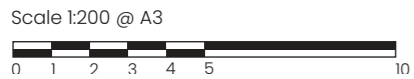


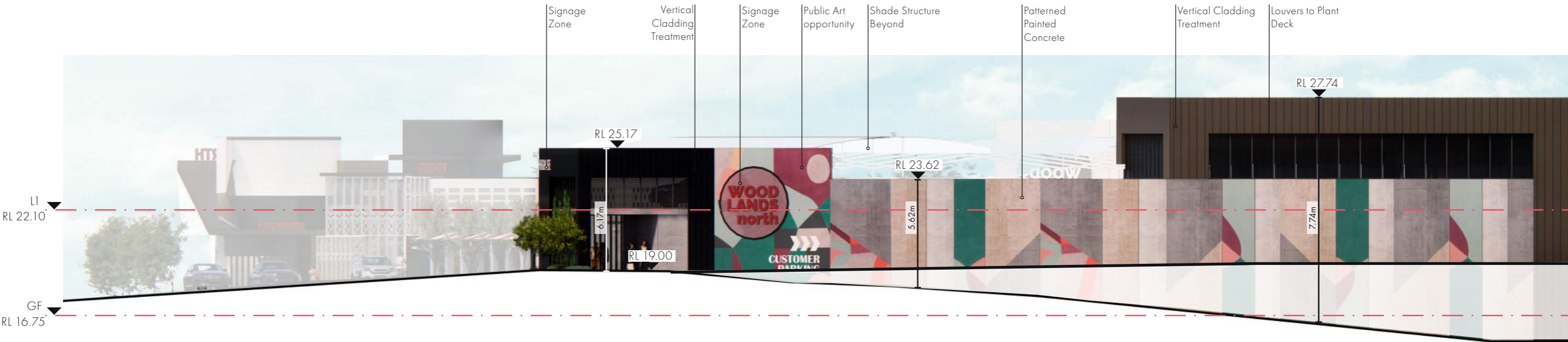


East Elevation - A

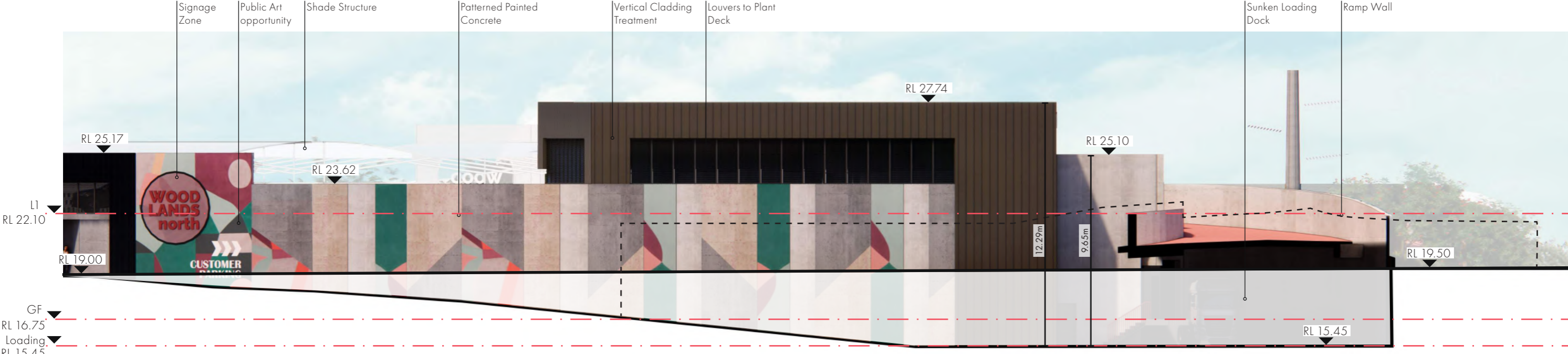


East Elevation - B

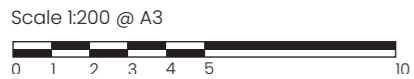


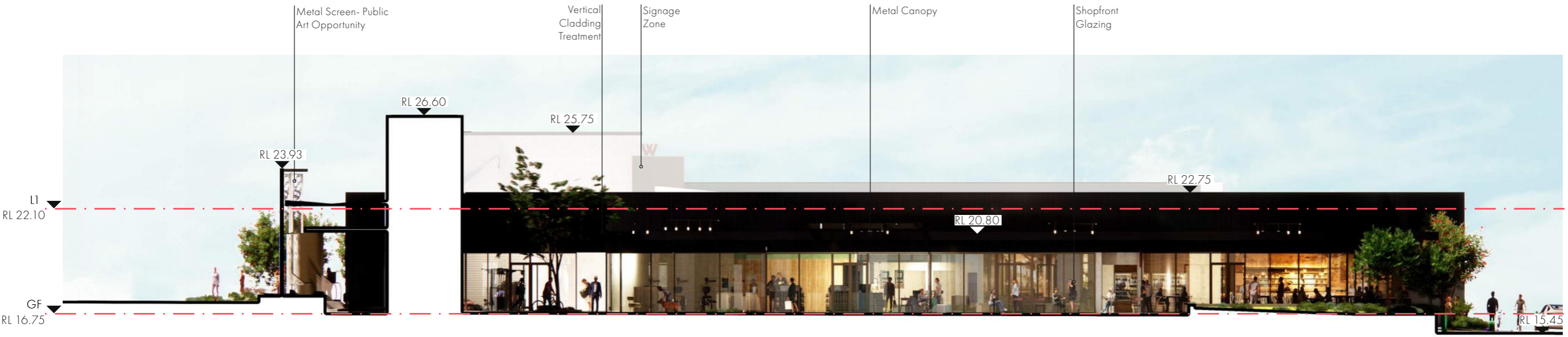


West Elevation - A



West Elevation - B

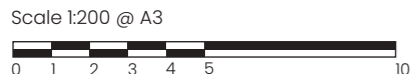




East Laneway Elevation



West Laneway Elevation



Rev Q (DA)

USE			GLAR (m ²)
T00	Shop		3826
T01	Shop		240
T02	Shop		266
T03	Shop		111
T04	Shop		100
T05	Restaurant		228
T06	Restaurant		237
T07	Shop		130
T08	Shop		129
T09	Shop		118
T10	Recreation - Private		672
	Mall		234
	Casual mall seating		17
	Corridors		75
	TOTAL		6383

ON-SITE BAYS (DECK)	156
Excluding Major Retail Pick Up Bays	4
TOTAL ON-SITE BAYS	156
Parking Ratio	2.5

ON-STREET BAYS	7
TOTAL BAYS AVAILABLE	163

TOTAL MOTORBIKE BAYS	4
-----------------------------	----------



Landscape Breakdown

- Landscaped Area Within Site
- Landscaped Area Outside Site

Area Breakdown

Within Site	628m ²
Outside Site	412m ²
Total Area	1,040m²
Percentage	9.6%

NOTES:

All areas are preliminary only and approximate.

Final lease area calculations and calculations for any legal purposes should be undertaken by a qualified surveyor from the as-constructed conditions.

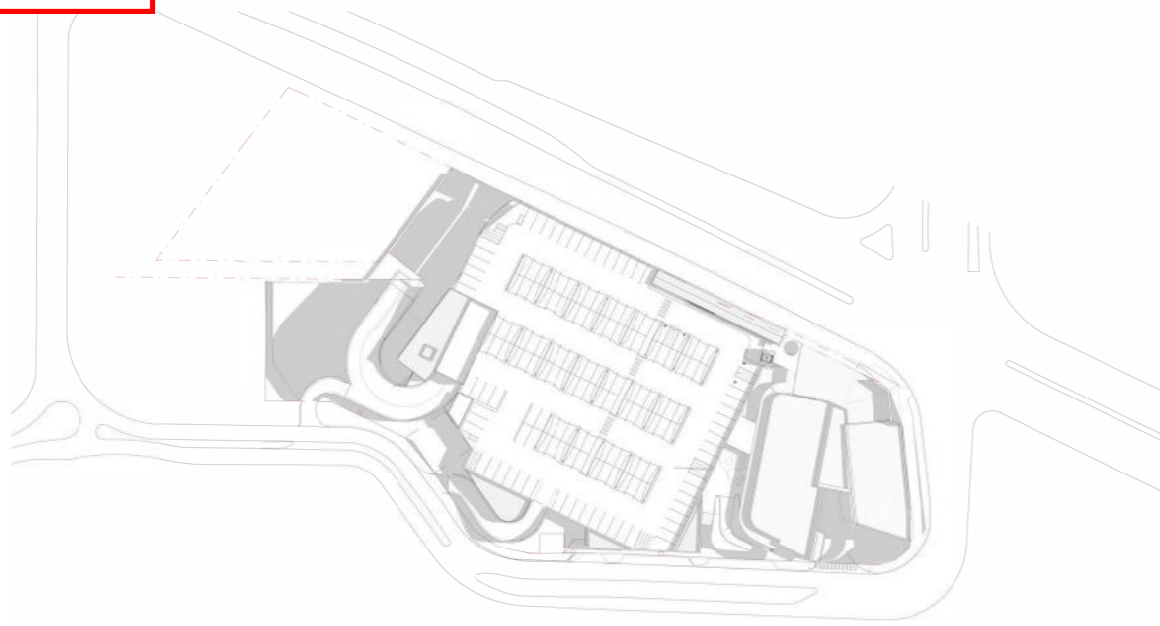
Areas are likely to adjust during the design development and documentation processes.

PLEASE NOTE: ALL AREAS IN SQUARE METRES

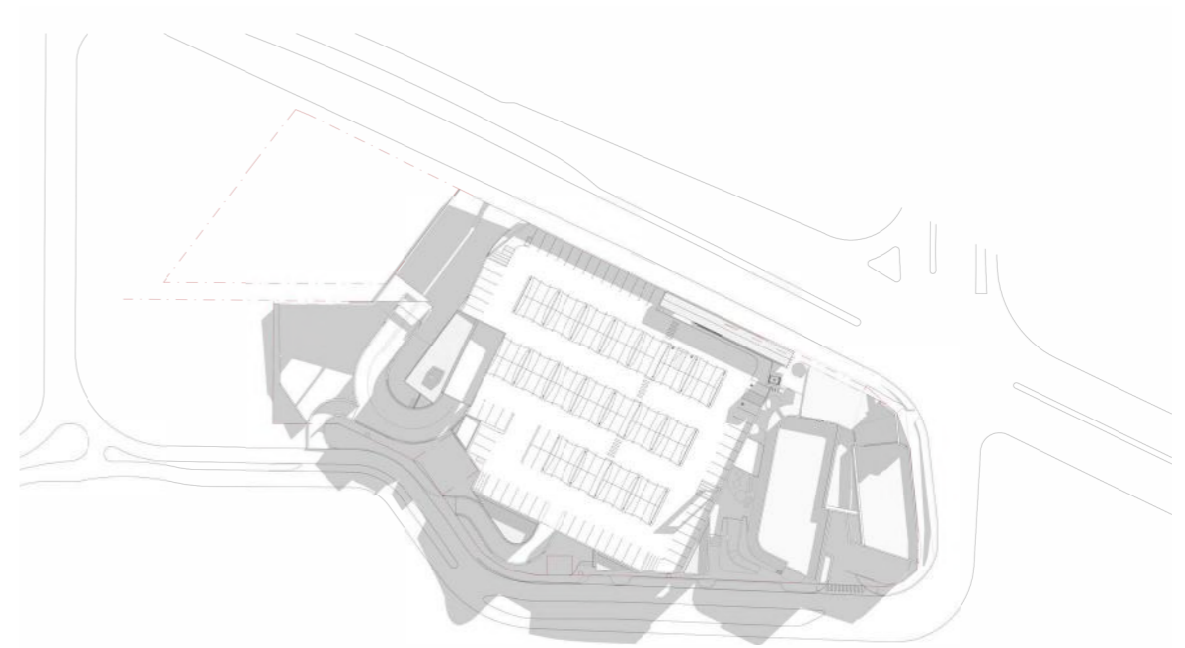
Schedule Breakdown

Pg 18

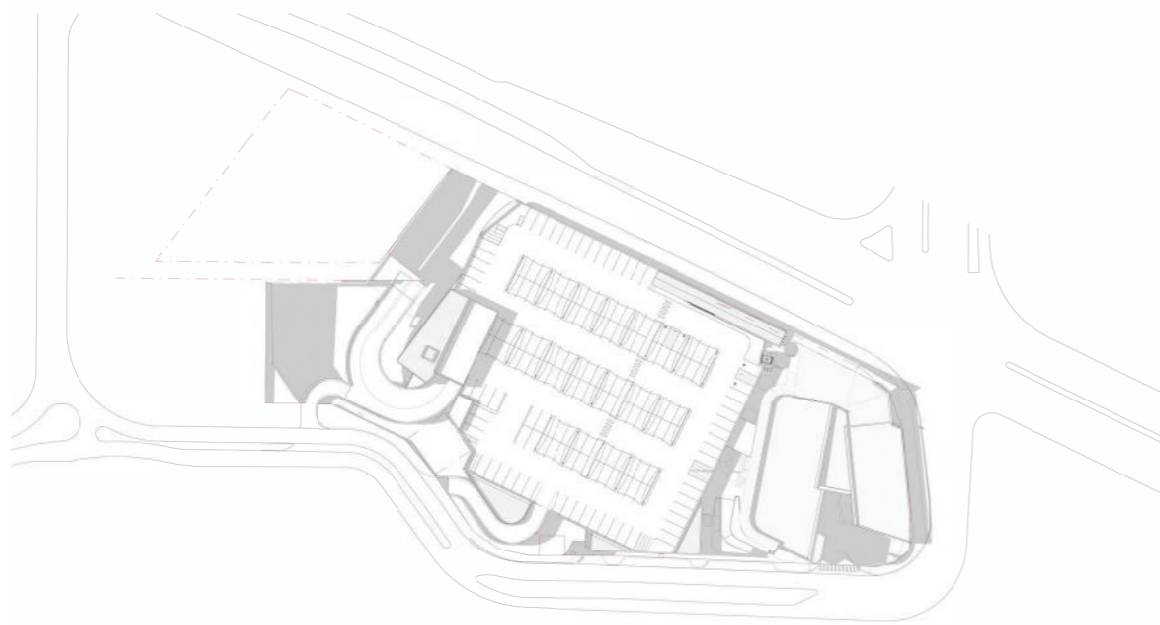
Rev C



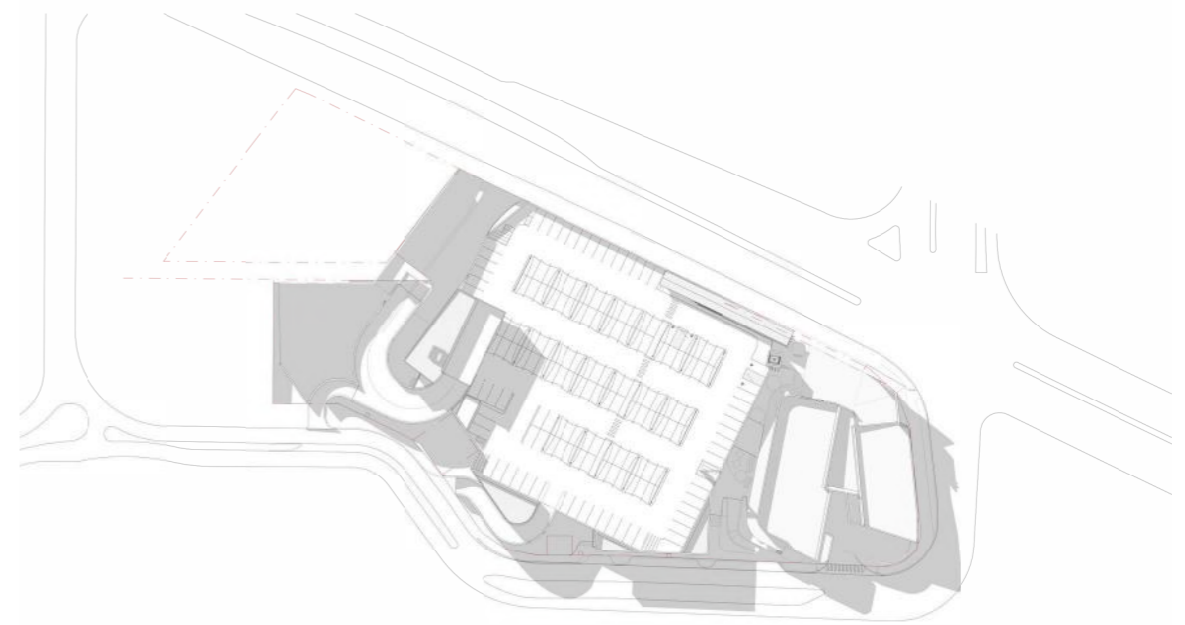
9am - 21st December



9am - 21st June



3pm - 21st December



3pm - 21st June



Scale 1:2000 @ A3



Sun Shading Diagrams

Pg 19

Rev C

Woodlands North Development Application

08 2025



