



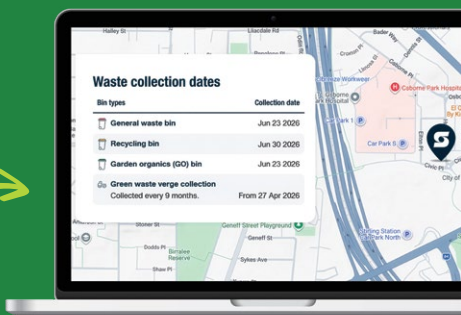
Waste and Recycling Guide 2026-27



Be a GREAT Sort! Do better than the bin.

Find your next collection day

Just type your address in the search bar. It will also show the next bulk green waste verge collection date for your area.



[Click here to learn more about bin and waste collections.](#)

Waste collections occur on all public holidays except Christmas Day, New Year's Day and Good Friday. If a collection is scheduled for any of these days, it will take place on the following day.

Hazardous waste

Recycling Centre Balcatta is one of 15 Household Hazardous Waste (HHW) free drop-off facilities in WA. Maximum of 20L or 20kg per day. No commercial quantities accepted.



Items accepted:

- ✓ Aerosol cans
- ✓ Batteries
- ✓ Fire extinguishers
- ✓ Flares
- ✓ Fluoro light globes / tubes
- ✓ Gas bottles (max capacity 9kg)
- ✓ Motor oil, coolants, filters (max 20L)
- ✓ Paints and solvents
- ✓ Pool and household chemicals
- ✓ Varnish and deck stains
- ✓ X-ray films.



[Click here for details about recycling and hazardous waste.](#)



Items NOT accepted:

- ✗ Asbestos – contact Mindarie Regional Council on (08) 9306 6303 for free drop-off options
- ✗ Explosives or ammunition – contact your local police station
- ✗ Commercial hazardous waste
- ✗ Radioactive materials (excluding smoke alarms).



[Click here to find your nearest drop-off locations for items that can't go in your kerbside bins.](#)



Garden Organics (GO) bin

Lime-green lid bin

Collected fortnightly



✓ Use me for:



✓ Grass clippings



✓ Weeds and flowers



✓ Leaves



✓ Plant prunings and small branches

✗ DO NOT use me for

✗ General waste or food waste

✗ Soil, sand or rocks

✗ Large logs or stumps

✗ Garden tools or plant pots.

What happens next?

Your lime-green lid bin gets collected fortnightly and the garden organics waste is transported to a composting facility.

At this facility, your garden organics waste undergo a 12-week composting process before being used in landscaping and agriculture.



Be a GREAT Sort when disposing of garden organics waste



Compost at home

Transform your garden organics waste at home and create your own nutrient-rich compost. Visit www.stirling.wa.gov.au/events to check for upcoming workshops where you can learn to compost at home.

Recycling bin

Yellow lid bin

Collected fortnightly



✓ Recycling is simple – it's only these five things:



1

✓ Paper



4

✓ Cardboard



2

✓ Glass bottles and jars



5

✓ Plastic bottles and containers



3

✓ Cans
(aluminium and steel)

Rinsed,
loose,
lids off!

✗ DO NOT use me for

✗ Clothing or textiles

✗ Food or garden organics

✗ Silver-lined cartons

✗ Soft plastics

✗ Nappies

✗ Coffee cups

✗ Bagged items

✗ Batteries

✗ Aerosol cans.



Not sure which bin to use?

[Click here to check the Recycle Right A-Z guide.](#)



What happens next?

Your yellow lid bin gets collected fortnightly. The contents are transported to a Material Recovery Facility (MRF) for sorting. The sorting process separates plastic, paper, aluminium, steel, cardboard and glass.



[Click here to take a virtual tour of Veolia's Material Recovery Facility.](#)



General waste bin

Red lid bin

Collected weekly



✓ Use me for:



✓ Food scraps



✓ Soft plastic bags and packaging



✓ Pet waste and kitty litter



✓ Nappies, hygiene and sanitary products



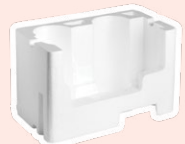
✓ Disposable coffee cups and drink containers



✓ Silver-lined cartons



✓ Meat trays and soiled packaging



✓ Polystyrene



✓ Worn-out clothing and textiles

✗ DO NOT use me for

✗ Batteries

✗ Aerosol cans

✗ Hot ashes

✗ Syringes

✗ Soil, sand or rocks

✗ Bricks or construction waste

✗ Gas bottles

✗ E-waste (anything with a power cord or battery)

✗ Any other hazardous waste items.



Never bin a battery!

Or anything else with a battery inside.



Do better than the bin

Did you know that the City provides a range of waste avoidance initiatives including rebates for cloth nappies and reusable sanitary products?

Check our Waste Initiatives for upcoming workshops to learn unique skills, access education resources and do better than the bin.



Click here to find out more about our waste initiatives and programs.



Learn skills to avoid waste

Recycling Centre Balcatta

The City has a dedicated recycling centre at 238 Balcatta Road, Balcatta.

Opening hours:

Monday to Saturday: 7.30am – 4.00pm | Sunday: 8.00am – 4.00pm.
Closed Christmas Day, New Year's Day and Good Friday.

Drop-off these items free of charge:

- Aluminium and steel cans
- Bicycles (working)
- Batteries and Household Hazardous Waste
- Clothing, fabric and shoes
- Cardboard and paper
- Household furniture in good condition (at the City's discretion)
- E-waste (electronics with a battery or power cord)
- Landscaping items
- Polystyrene
- Scrap metals
- White goods (excluding fridges, freezers and air conditioners).



[Click here to see the full list of items that are free to drop-off.](#)

The following items must be taken over the weighbridge – fees apply:

- Air conditioners
- Fridges and freezers
- Tyres
- Household bulk waste
- Mattresses
- Mattress bases.

RETURN YOUR CONTAINERS

10c



Visit a refund point, book a collection from your home or workplace, look for a Container Exchange Point attached to a general waste bin and drop it in, or donate them to a good cause.

YOUR RETURN, YOUR WAY.

No matter how you do it, there's a return option that fits your routine.



[Click here to find your nearest return point.](#)

Tip passes

City of Stirling ratepayers receive tip passes on their annual rates notice. Tip passes can be combined with other payment methods if the delivered weight exceeds the passes provided. Fees apply after all tip passes have been used.



Tip passes are provided on an annual basis for residential use only and are non-transferable:

- Your tip pass, including the barcode, are required on entry to the Recycling Centre Balcatta paid services area
- Expired tip passes will not be accepted.



[Click here to sign-up for convenient online access to your tip passes and to learn more about using them.](#)



The Recycling Centre Balcatta does not accept asbestos materials. For disposal options, contact:

- Mindarie Regional Council
t: (08) 9306 6303
- Red Hill Waste Management Facility
t: (08) 6219 7333
- West Metro Recycling Centre
t: (08) 9384 6711



[Click here for more information on asbestos safety.](#)

GET YOUR UNWANTED THINGS UNDELIVERED FOR FREE!

Free on-demand collection services

Properties can access each of the following services once every financial year (1 July – 30 June):

Mattresses

A maximum of six items can be collected as part of this service (one mattress and one base equals two items).



Electronic waste

A maximum of six items can be collected, such as computers, televisions, printers and scanners.

White goods



A maximum of four items can be collected, including fridges, freezers, ovens, cooktops, washing machines, clothes dryers and dishwashers.

Skip bin hire or lounge collection

Select a 3m³ skip bin for bulky household waste or a lounge collection service (three item maximum).



[Click here to book your free on-demand collection service online.](#)

Using your skip bin

✓ Use me for:

- ✓ Broken household and garden furniture
- ✓ Sporting equipment
- ✓ Timber products up to 1.5m in length
- ✓ Carpet/floor coverings (no tiles)
- ✓ Garden equipment, incl. pots and hoses
- ✓ Broken toys (batteries removed).

✗ DO NOT use me for:

- ✗ Asbestos
- ✗ Electronic waste
- ✗ Food or garden organic waste
- ✗ Gas bottles
- ✗ Mattresses/bases
- ✗ Tyres and car parts
- ✗ Commercial and trade waste
- ✗ White goods
- ✗ Liquids, including oil and paint
- ✗ Sand, bricks, pavers and tiles
- ✗ Batteries or anything with a battery inside.

- Skip bins will be collected two business days after delivery
- Delivery and collection occurs on weekdays between 6.00am – 6.00pm
- Skip bins are 1.8m long and 1.6m wide. Ensure there's sufficient space on your verge before booking.

Call the City for skip bin enquiries on (08) 9205 8555 between 8.30am – 5.00pm, Monday to Friday, or visit www.stirling.wa.gov.au/ondemand

DO NOT:
Overfill your skip bin (it will not be collected) or refill the skip bin when it is awaiting collection.

Residential bin online services



[Click here to enquire or lodge a report to:](#)



Request a missed bin



Report a damaged bin



Request another bin or upgrade.



Report a missing bin



Request a new bin

Bulk green waste verge collection

Bulk green waste verge collections are conducted every nine months. Small branches and prunings can be placed in your Garden Organics (GO) bin for collection all year round.

Place green waste items on the verge up to nine days ahead of your collection date. Collections may take up to two weeks to be completed.



[Click here for maps and collection dates.](#)



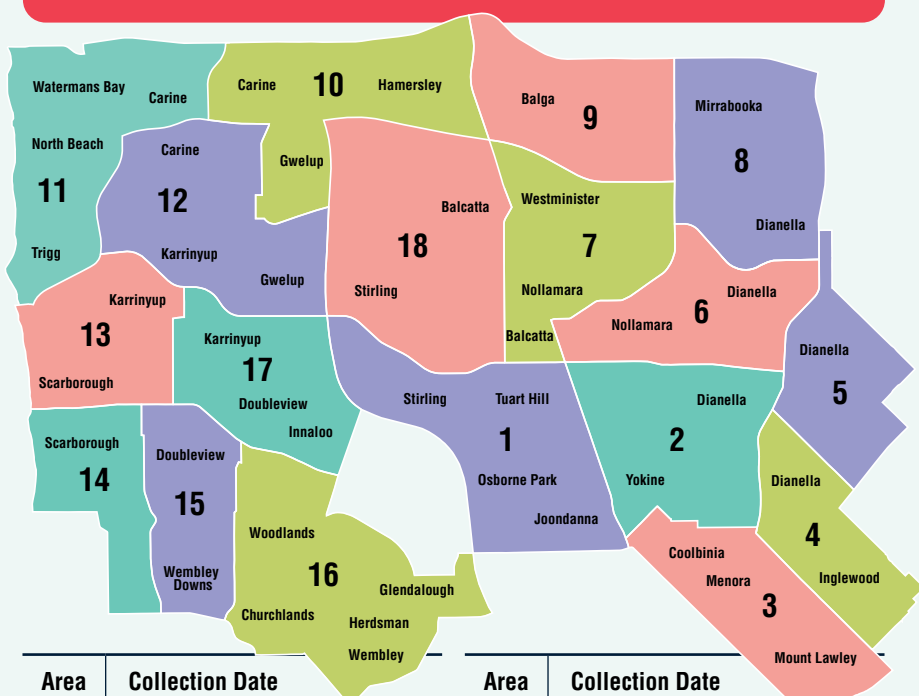
To ensure green waste can be collected from your verge, please make sure that:

- ✓ Branches are no more than 1.5m long
- ✓ Branches that are more than 25cm in diameter (thickness) have been cut into lengths of no more than 30cm
- ✓ Green waste is loose, not bagged or in boxes
- ✓ Green waste is free of contamination.



DO NOT place green waste on or near:

- ✗ Footpaths or driveways, or allow it to overhang onto roadways, obstructing views
- ✗ Artificial turf, trees, stumps or sprinklers
- ✗ Fences, walls, letterboxes or fixed objects
- ✗ Water meters, telecommunication covers, electrical green domes, manhole covers or posts.



Area	Collection Date
1	18 January 2027
2	1 February 2027
3	15 February 2027
4	1 March 2027
5	15 March 2027
6	6 July 2026 and 29 March 2027
7	20 July 2026 and 12 April 2027
8	3 August 2026 and 26 April 2027
9	17 August 2026 and 10 May 2027

Area	Collection Date
10	31 August 2026 and 24 May 2027
11	14 September 2026 and 7 June 2027
12	28 September 2026 and 21 June 2027
13	12 October 2026 and 5 July 2027
14	26 October 2026
15	9 November 2026
16	23 November 2026
17	7 December 2026
18	4 January 2027

Collection areas are not defined by suburb. Use this map to see bulk green waste verge collection area boundaries.

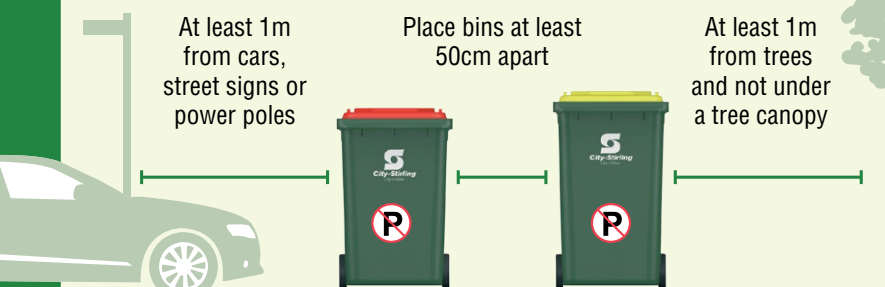


[Click here to enter your address and find your next collection day.](#)

Have you left enough space?

To ensure our waste trucks can empty your bins, check there is enough space around them.

Remember to bring your bins in from the kerb after they've been emptied.



Do not park vehicles in front of the bins



Place bins next to kerb by 6.00am



Keep the weight of the bin under 70kg



Avoid overfilling to ensure the lid can close



Administration Centre 25 Cedric Street Stirling WA 6021
Telephone (08) 9205 8555 | **Enquiries** www.stirling.wa.gov.au/enquiries
Web www.stirling.wa.gov.au | [f](#) [i](#) [t](#) [v](#) /citystirlingwa

This information is available in alternative formats on request.
Please contact the Customer Contact Centre on (08) 9205 8555.