



Heritage Inventory



Scarborough Redevelopment Area

September 2016



Heritage Inventory

1. INTRODUCTION	4
2. MANAGEMENT OF PLACES IN THE HERITAGE INVENTORY	7
3. THEMATIC HISTORY OF SCARBOROUGH REDEVELOPMENT AREA	9
4. LIST OF PLACES	15
5. PLACE RECORD FORMS	16

1. Introduction

THE INVENTORY

The Metropolitan Redevelopment Authority (the Authority) is responsible for the urban renewal of the Scarborough Redevelopment Area and proposes to recognise and afford protective measures to those places that have cultural heritage significance. The Scarborough Redevelopment Scheme (the Scheme) empowers the Authority to compile and maintain a list of heritage places, called a Heritage Inventory (HI).

The Scarborough HI has been developed in accordance with the provisions of the Heritage of Western Australia Act 1990 (the Heritage Act), which requires all Local Governments to compile an inventory of heritage places as the foundation of sound local heritage planning. As a State Government agency, the Authority acknowledges its role and responsibilities in “recognising, promoting and protecting” the cultural heritage that falls under its jurisdiction, as articulated in the State Cultural Heritage Policy.

The Scarborough HI comprises a list of heritage places that are of cultural heritage significance to both local and State communities. The places listed in the HI are supported by a ‘thematic history’, which identifies the history, stories and events that have shaped Scarborough and are represented in the built environment. The thematic history is important as it informs the assessment of significance of the places.

Whilst the Scarborough Redevelopment Area has undergone much change over successive periods of development, the area still retains a number of places that reflect moments or periods in the local historical timeline. A key objective of the HI is to recognise and protect such cultural heritage, from iconic sites such as the State Heritage Listed Scarborough Clock Tower to other less recognised but important historical elements of Scarborough.

STUDY AREA

The study area comprises the land within the Scarborough Redevelopment Area, as shown on the plan below:



FIGURE 1 : SCARBOROUGH REDEVELOPMENT AREA

METHODOLOGY

The methodology adopted for the preparation of this Heritage Inventory (HI) is based on the methodology set out in the State Heritage Office's Basic Principles for Local Government Inventories (2012) and Criteria for the Assessment of Local Heritage Places and Areas (2012). These guidelines have been adapted to ensure that this study is consistent with the Authority's planning framework. The essential principles and philosophy of the Australia International Council on Monuments and Sites (ICOMOS) Charter for Places of Cultural Significance (the 'Burra Charter', 2013) are also drawn upon in the determination of heritage values and management levels.

The preparation process involved an examination of existing and previous inventories prepared by the City of Stirling (1997, 2005, 2014) as well as other significant reports such as the 'Scarborough Clock Tower Conservation Management Plan' (prepared for the City of Stirling, 2014, TPG Town Planning, Urban Design & Heritage) and 'Scarborough Edge: A creative template for the Scarborough Redevelopment Area' (prepared for the Authority, 2015, Material Thinking). Documentary research of primary sources including historic newspapers and building plans and a desktop search of the State Heritage Office InHerit database was also conducted.

Each place is assessed in terms of its condition, integrity and authenticity which contribute to the degree or 'level' of significance of the place. The three terms are defined as follows:

- Condition – the current condition of the place in relation to the values for which that place has been assessed. Each place is graded on the scale of Good, Fair or Poor.
- Integrity – the extent to which a building retains its original function, graded on a scale of High, Moderate or Low.
- Authenticity – the extent to which the fabric is in its original state, graded on a scale of High, Moderate or Low.

In accordance with the standard methodology for the preparation of HI's, physical surveys of places within the study area were conducted from the street only and did not include examinations of interior spaces.

2. Management of Places in the Heritage Inventory

MANAGEMENT CATEGORIES

The following terms are used to classify and describe each place listed in the heritage inventory to enable appropriate management of the place, with details included in the Place Record for each listed place:

Statement of Significance

Each place includes a Statement of Significance which is a specific and unique description of the key heritage qualities of each place.

Desirable Outcome

The Desirable Outcome relates to how a heritage place should be managed with regard to any future development of the place.

Management Level

The Management Level for a place is related to its heritage value and will have significant influence on how the development of a place is to be managed (i.e. its 'desired outcome'). The Management Level is as important as the list of places itself to ensure appropriate future management of all places listed on the HI.

The Management Levels are outlined in the following table:

Management Level	Description	Desired Outcome
Level 1	Place of State Significance	These places are included in the State Register of Heritage Places and will be afforded the highest level of protection both through the provisions of the Heritage Act and the Redevelopment Scheme and Heritage Development Policy.
Level 2	Place of Local Significance	These places are of local significance in their own right and will be afforded a high level of protection through the provisions of the Redevelopment Scheme and Heritage Development Policy.
Level 3	Place of Some Significance	Conservation of these places is highly desirable through adaptive reuse, however proposed partial or full demolition is to be assessed on a case by case basis at the Development Application stage in accordance with the Redevelopment Scheme and Heritage Development Policy, including a full heritage assessment and impact statement. Photographic records and interpretation should be included in any redevelopment of the site.
Level 4	Historic Site	These places are historic sites with few or no built features and should be retained as a record in the Inventory for archival purposes. Their significant should be recognised through interpretation in any redevelopment of the site.

Table 1 - Management Levels for Heritage Places

PLANNING IMPLICATIONS

The HI has a key role to play in the protection and conservation of local and State heritage. This document is adopted by the Authority under the provisions of the Scarborough Redevelopment Scheme and, together with the Authority's Heritage Places Development Policy, will be used in assessment of development applications and planning decision making regarding heritage places in the Scarborough Redevelopment Area.

Ultimately, the relevant local government authority may include the information provided in this inventory as a supplementary list to their existing heritage inventory or statutory scheme list. They may also develop further policies, which encourage the conservation of these places through incentives and other means available to them under their Town Planning Scheme.

ABORIGINAL HERITAGE SITES

The Authority acknowledges the traditional owners of land within its Redevelopment Areas.

This heritage inventory does not list registered Aboriginal Sites within the Scarborough Redevelopment Area as they are recorded through the Department of Aboriginal Affairs system in accordance with the *Aboriginal Heritage Act 1972*. Notwithstanding, a desktop search of the Department of Aboriginal Affairs (DAA) Aboriginal Heritage Inquiry System has revealed that there are no Registered Aboriginal Sites or 'Other Heritage Places' within the Scarborough Redevelopment Area.

This heritage inventory focuses particularly on the heritage of existing (and former) built form.

3. Thematic History of Scarborough Redevelopment Area

SUMMARY OF THEMATIC HISTORY

1850 - 1919

Early Development

1850s	Scarborough area first settled by John Hughes, who cleared land nine miles north of Perth for grazing
1869	First parcel of land granted in Scarborough to John Hughes
1885	A visiting Sydney journalist explored the coastline of Scarborough and gave much publicity to the high qualities of the ocean beach
Late 1880s	Encouraged by the publicity, some Perth land and estate agents investigated the possibilities of the area and released the first subdivision
1892	Land in Scarborough was purchased by a Patrick Callaghan of Melbourne
1890s	Callaghan subdivided the land and sold some blocks in Melbourne. Callaghan named one of the streets in the subdivision Scarborough Road (now Drabble road) and is likely that the suburb name originated from this, presumably after the English seaside town of the same name.
c.1910	Subdivided land at Scarborough advertised for sale by Peet & Co. Auctioneers
1912	“Plank Road” from Main Street tramway to Njookenbooroo (now Innaloo) completed, which was followed by a bush track to Scarborough
1916	Five men drowned attempting to save a 16 year old girl in the surf
1919	Well sunk by the Perth Roads Board at the intersection of Lilian Street (West Coast Highway) and North Beach Road (Scarborough Beach Road) to provide public water supply

1920-1959

From Holiday to Home

1927	North Beach Road extended to the beach and renamed Scarborough Beach Road Harold Millet’s Scarborough Bus Co started providing a service to Scarborough Beach The “Plank Road” was replaced by a macadamised road
1928	Scarboro Surf Lifesaving Club established
1930-1935	Scarborough Beach Road widened and bituminised
1930	Local services increased with the opening of a local bakery, run by Gerry Taylor, and the “Meat and Ice Company” butcher
1932	The Esplanade opened by Perth Roads Board
1934	First Scarboro Surf Lifesaving Club building opened, just north of where the Scarborough Amphitheatre is now located Beach cubicles built on the western side of The Esplanade by Mr M. Georgeff, available to hire by the day or the week

1939	Scarborough Hotel built Luna Park opened
1940	West Coast Highway opened, linking the various coastal beaches Residential population of Scarborough listed as 205 people
1946	Residential population reached approximately 2,000 people
1950s	La Spiaggia café opened – with the outdoor dancing area known as the “Snake Pit”
1956	Rotary Club of Scarborough formed

1960-1999

Late 20th Century

1972	Luna Park closed and demolished
c.1975	Luna Shopping Centre constructed
1979	Scarborough Clock Tower built to commemorate 150 years of colonial settlement in WA and 75 years of Rotary International
1986	Observation City hotel constructed
c.1990	Scarborough Hotel demolished to make way for the Observation Rise development

2000-

21st Century Renewal

2006	Scarborough Amphitheatre constructed and foreshore improvements undertaken by the City of Stirling
2013	State Government commits funding to the redevelopment of Scarborough
2014	<i>Metropolitan Redevelopment Authority Regulations 2011</i> amended and Interim Scarborough Redevelopment Scheme gazetted to transfer planning control from City of Stirling to MRA

THEMATIC HISTORY OF SCARBOROUGH

EARLY DEVELOPMENT (1850-1919)

Prior to European settlement, the Whadjuk Noongar Aboriginal people had occupied the land around what is now the Perth Metropolitan Region for approximately 45,000 years.¹

After the arrival of European settlers to the Swan River Colony, Scarborough was first settled in the early 1850s by John Hughes who took up grazing land. He cleared the land and built a limestone cottage which was completed in 1855. In 1869 Hughes purchased the land and became the first land owner in the area. The area was slow to develop as it was sandy, of little agricultural value and prone to strong winds, rendering it unattractive to early settlers.

In 1885, a visiting Sydney journalist explored the coastline of Scarborough and gave much publicity to the high qualities of the ocean beach. Encouraged by the publicity, some Perth land and estate agents investigated the possibilities of the area and released the first subdivision however sales were still slow. Eventually the land was sold to a Patrick Callaghan of Melbourne in October 1892. Callaghan subdivided the land and sold some blocks in Melbourne. Callaghan named one of the streets in the subdivision Scarborough Road (now Drabble road) and it is likely that the suburb name originated from this, presumably after the English seaside town of the same name.²

It wasn't until decades later that Scarborough cemented itself as a sought-after seaside locale, described as "the coming fashionable watering place" offering the nearest available ocean frontages to Perth.³

Holiday makers would travel from Perth along the "Plank Road", which was a timber road completed in 1912 that ran from the north side of Herdsman's Lake to Njookenbooroo (now Innaloo) followed by a bush track to the coast. Alternatively, there was a bush track around the western side of Herdsman's Lake from Subiaco railway station. During the summer months visitors used to travel along these routes in their horse and sulky to get to the beach.

On Saturday 30 December 1916, tragedy struck at the popular swimming and fishing beach. Five men sacrificed their lives in a vain attempt to save the life of Kathleen Gornall, a 16 year old girl, who was in trouble in the surf. This brought public attention to the dangers of this metropolitan beach.

FROM HOLIDAY TO HOME (1920-1959)

By 1927, North Beach Road had been extended to the beach and was renamed Scarborough Beach Road. Harold Millet's Scarborough Bus Co. started providing a service to the Scarborough Beach and the outmoded "Plank Road" was replaced by a macadamised road (layers of small broken stones, rolled solid and smooth).⁴ At this time it was decided that the name Aboriginal name 'Njookenbooroo' was too difficult to pronounce or spell and so an alternative name was sought. A list of Aboriginal words compiled by Daisy Bates was provided and 'Innaloo', the name of an Aboriginal woman from Dongara was chosen. The name was approved in 1927.⁵

On 14 January 1928, a newspaper article sighting the need to form a Life Saving Club brought in a fantastic response, resulting in enormous donations being sent in and 50 members enrolling. The Scarborough Surf Life Saving Club officially came into existence.⁶

1 South West Aboriginal Land and Sea Council, 'Connection to Country' publication, available from <http://www.noongar.org.au/images/pdf/forms/BookOne-ConnectiontoCountry12p.pdf> accessed 26 August 2015.

2 Landgate (last updated 2 September 2015), 'Suburb in the Spotlight: Scarborough', available from <http://www0.landgate.wa.gov.au/property-reports/market-trends/suburb-in-the-spotlight> accessed 8 September 2015.

3 Hope & Klem (c.1910), 'Scarborough, North Beach [cartographic material] : the coming fashionable watering place', Peet & Co. Ltd. Auctioneers, Perth.

4 'The History of Scarborough', accessed from www.mggraphics.com.au/scarb/history2.htm accessed 28 August 2015

5 Landgate (2015), 'Perth Suburb Names' available from <http://www0.landgate.wa.gov.au/maps-and-imagery/wa-geographic-names/name-history/historical-suburb-names> accessed 11 September 2015.

6 Website: www.chroniclescarborough.com.au, accessed on 28 August 2015

In 1930 Scarborough Beach Road was widened and by 1931 motor vehicles were heading for Scarborough Beach every Sunday of summer. Scarborough Beach Road became an important commercial route linking Scarborough with the inner northern suburbs and the city.

The Esplanade, also known as The Promenade, was officially opened by the Perth Road Board in 1932. Improved access and services aided Scarborough's development and popularity for both holiday-makers and residents.

As surfing grew in popularity so too did Scarborough as it became the favoured surfing beach in the metropolitan area with a bus service to the beach. In 1933 building commenced on the first Scarborough Surf Life Saving Club house, at a cost of £1,250, which was officially opened on 28 January 1934.

In 1934, the Perth Road Board called for tenders to construct a stone retaining wall along The Esplanade at Scarborough Beach. Enterprising local contractor Mr. Michael Georgeff offered to build the wall for free, in exchange for permission to build beach cubicles on the foreshore side of the wall and to let them for a period of 21 years.⁷ The cubicles were available for hire by the day or the week. Each cubicle was 12 feet by 14 feet with a small verandah at the front. People using the cubicles for their holiday home had to collect water from an outside tap, with one tap provided per four cubicles. The ladies ablution block was at one end of the cubicle block, and the gents at the other end.⁸

The contract awarded for the constructed of the retaining wall and subsequent permission granted for the beach cubicles became controversial, with a rate-payers group known as "The Vigilance Committee" alleging maladministration in regard to the Scarborough agreement and other works awarded to Mr Georgeff, leading to a Government Inquiry. The report from the inquiry supported the contentions of many, including the Vigilance Committee, that favoured treatment was given to Mr. Georgeff and showed that the large amount of criticism thrown at the Perth Roads Board in connection with Scarborough Beach improvements was quite justified.⁹

Reflecting the increasing number of visitors to and popularity of the area, October 1939 saw the opening of the "magnificent" Scarborough Hotel designed by architect W.G. Bennett, which was described as "one of the most modern of any resort hotels in the Commonwealth".¹⁰ Scarborough Hotel was demolished in the late 1980s to make way for the Observation Rise residential development.

In November 1939 Luna Park, a fairground, was opened on the site of the current Luna Shopping Centre with attractions including "the latest and most sensational riding devices" – electric dodge-'em cars, flying boats, the "Gee Whiz" and novelty games.¹¹ Bathing Beauty Contests were the highlight of the summer season; a platform was erected for the contests in the centre of Luna Park.

By the end of the decade Scarborough boasted an established Surf Lifesaving Club, Luna Park, the new Scarborough Hotel, and an assortment of food, beverage and accommodation options.

In the 1940s, Scarborough was still considered a holiday destination, described as "a popular summer resort [with] good bathing and surfing" in the Western Australian Post Office Directory.¹² This decade saw dramatic growth in the residential population, from just 205 people in 1940 to approximately 2,000 by 1946, marking a shift in the culture of Scarborough.¹³

In the mid-1950s, hundreds of young people were regularly gathering and dancing at local institution,

7 'Scarborough's "Gift" Wall' (10 February 1935), Sunday Times (Perth, WA 1902-1954), p.2, available from <http://nla.gov.au/nla.news-page4436968> accessed 11 September 2015

8 City of Stirling Local Studies Collection (n.d.), Scarborough Beach cubicles [photograph] summary information LH00041, available from <http://services.stirling.wa.gov.au/amlibweb/Art/174395/LH000041.jpg> accessed 11 September 2015

9 'Government Investigator Hits Out' (27 October 1935), Sunday Times (Perth, WA 1902-1954), p.2, available from <http://nla.gov.au/nla.news-article58744704> accessed 11 September 2015.

10 'Riding the Surf at Scarborough: West's Waikiki Beach' (29 October 1939), Sunday Times (Perth, WA 1902-1954), p. 24, available from <http://nla.gov.au/nla.news-page43-4091> accessed 28 August 2014.

11 [no heading] (29 October 1939), Sunday Times (Perth, WA 1902-1954), p. 24, available from <http://nla.gov.au/nla.news-page43-4091> accessed 28 August 2014.

12 H. Wise & Co. (1940), Western Australian Post Office Directory, p. 212, available from <http://www.slwa.wa.gov.au/pdf/battye/pods/1940/0121.pdf> accessed 31 August 2015

13 H. Wise & Co. (1946), Western Australian Post Office Directory, p. 218, available from <http://www.slwa.wa.gov.au/pdf/battye/pods/1947/0126.pdf> accessed 31 August 2015

the "Snake Pit". This was the name given to an outdoor dancing area of the café "La Spiaggia" (the beachfront) which was located at the corner of Manning Street and the Esplanade, after the 'snaky' style of dancing.¹⁴ The legacy of the Snake Pit is seen reflected in the dancing of concert-goers to contemporary popular music outside in the Scarborough Amphitheatre, not far from the original site.

LATE 20TH CENTURY (1960-1999)

In 1972 Luna Park was closed and demolished the same year. By 1977 the Luna Shopping Centre had been constructed.

In 1979, the Rotary Club of Scarborough approached the City of Stirling regarding an 'appropriate project' to commemorate 150 years of colonial settlement in Western Australia. The Club also wished to commemorate 75 years of Rotary International and felt that a single large project undertaken during 1979 could commemorate both anniversaries.¹⁵ The 'futuristic tower was designed to provide an impressive focal point at one of Western Australia's most popular beaches'.¹⁶ Construction of the monument commenced in August 1979 and the Governor of Western Australia, Sir Wallace Kyle, officially dedicated Scarborough Clock Tower on 13 September 1979.

The rise of surf-culture in the 1970s boosted the popularity of Scarborough. Development in the area increased into the 1980s, most noticeably with the construction of Observation City, now known as the Rendezvous Hotel. Observation City was original built in 1986 for local entrepreneur Alan Bond, in anticipation of the influx of visitors to arrive in Perth for 1987 America's Cup, held in Fremantle. The approval of the hotel was not without controversy – it was alleged that Bond wrote a cheque for \$25,000 made out to "cash" which was intended for some City of Stirling councillors, however it went astray. Former Premier Ray O'Connor was later found guilty of stealing the cheque and sentenced to 18 month in prison.¹⁷

21ST CENTURY RENEWAL (2000-)

For several decades the area has suffered from a poor reputation with a corresponding lack of new investment and ailing infrastructure. As one of Perth's major tourist attractions, Scarborough is a strategically important asset for the State and its revitalisation potential has been recognised by local and State Government.

In the last decade the City of Stirling has invested heavily in a revised planning framework, foreshore improvements including the Scarborough Amphitheatre, constructed in 2006, and a master plan for the foreshore upgrade.

In 2013 the State Government committed funding to help deliver improvements and revitalise the area. In 2014, the Metropolitan Redevelopment Authority Regulations 2011 were amended to incorporate the Scarborough Redevelopment Area and the Interim Scarborough Redevelopment Scheme was adopted, transferring planning authority to the Metropolitan Redevelopment Authority.

14 Errichetti, Rosina, 'La Spiaggia – The Snake Pit', Chronicle Scarborough, available from <http://www.chroniclescarborough.com.au/story/la-spiaggia/> accessed 27 August 2015
15 Media Release (20 August 1979), Stirling City Council, Scarborough Clock Tower, AN 63, Acc 2655, Item 0.4.9.2 State Records Office of Western Australia (SROWA)
16 East Suburban News (30 August 1979), supplement to The West Australian, p7
17 Kennedy, Peter (2014), Tales from Boomtown: Western Australian Premiers from Brand to Barnett, St Martin's Press, p.97



SCARBOROUGH HERITAGE INVENTORY PLAN


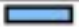
MANAGEMENT LEVEL	MRA PLACE NO.	MANAGEMENT LEVEL	MRA PLACE NO.
	LEVEL 1		LEVEL 3
	LEVEL 2		LEVEL 4
			3
			4, 5 & 6



FIGURE 2: SCARBOROUGH HERITAGE INVENTORY PLAN

4. List of Places

MRA Ref	Place Name	Address	Management Level
1	Scarborough Clock Tower	Roundabout within Lot 300, at the intersection of Scarborough Beach Road and The Esplanade	Level 1 – Place of State Significance
2	Kool Korner Café (fmr)	152 The Esplanade (cnr. Scarborough Beach Road)	Level 2 – Place of Local Significance
3	Grace Street Shops	78-82 Scarborough Beach Road (at the Grace Street intersection)	Level 3 – Place of Some Significance
4	Paringa Flats (fmr)	256 West Coast Highway (cnr. Brighton Road)	Level 4 – Historic Site
5	Coyne's Store (fmr)	30 Brighton Road (cnr. Hastings Street)	Level 4 – Historic Site
6	Luna Park (fmr)	241 West Coast Highway (cnr. Scarborough Beach Road)	Level 4 – Historic Site

Table 2 - List of Heritage Places

5. Place Record Forms

MRA Scarborough Heritage Inventory - Place Record Form

SCARBOROUGH CLOCK TOWER

MRA REF No. 1 / HCWA 16764



IMAGE 1: SCARBOROUGH CLOCK TOWER LOOKING WEST (2015)

Other Names: The Rotary Clock Tower of Scarborough Beach

MANAGEMENT LEVEL

LEVEL 1 – PLACE OF STATE SIGNIFICANCE

LOCATION

Address: Intersection of Scarborough Beach Road and The Esplanade, Scarborough
Land title description: Portion of Lot 300 on Deposited Plan 49593 being part of the land contained in Crown Land Title Volume 3140 Folio 560
Scheme Area: Scarborough Redevelopment Scheme
Precinct: Beachside Precinct

STATEMENT OF SIGNIFICANCE (State Register)

Scarborough Clock Tower, a precast sandblasted concrete and stainless steel clock tower, together with the paved surrounds, bench seats, garden beds and time capsule, has cultural heritage significance for the following reasons:

- The clock tower was constructed to commemorate the 150th anniversary of colonial settlement in Western Australia and the 75th anniversary of Rotary International, and was one of numerous commemorative projects undertaken during the sesquicentenary celebrations of 1979.
- The clock tower is a prominent and well-known landmark, with a high degree of visibility from both land and water, and contributes to the setting of the Scarborough Beach foreshore.
- The clock tower demonstrates creative design and use of materials chosen particularly to suit the coastal environment, including sandblasted concrete and stainless steel.
- The place is valued by the Rotary Club of Scarborough as one of their more prominent community projects.
- The place is valued by the local community as a prominent landmark that forms a focus for community events such as Christmas and New Years' celebrations and naturalisation ceremonies.

OTHER HERITAGE LISTINGS

State Register	Permanent 8/5/2007
Local Government Inventory	Yes
Other	-

DESIRABLE OUTCOME

Included on the State Register of Heritage Places and will be afforded the highest level of protection through the provisions of the Heritage Act, the Redevelopment Scheme and Heritage Development Policy.

PHYSICAL DESCRIPTION

Scarborough Clock Tower is a precast sandblasted concrete and stainless steel clock tower, constructed in 1979, with paved surrounds, bench seats, garden beds and a time capsule, located in a traffic roundabout at the intersection of Scarborough Beach Road and The Esplanade, Scarborough. The place forms an integral part of the Scarborough Beach foreshore environment. It is clearly visible from both land and water.

Scarborough Clock Tower is 40 metres tall and 4 metres wide at the top of the tower. It contains three curved, precast, sandblasted concrete legs with a pressed stainless steel plate clock structure at high level. This clock structure is the element that connects the three legs together. The clock structure is four metres wide and hexagonal in plan form with three sides containing clock faces and the other three sides connecting to the legs. Below the hexagonal element the clock structure also contains a cylindrical steel element which also connects to the three legs at a lower level. It sits in the centre of the traffic roundabout, which also contains a flagpole and four light poles.

There are three identical clock faces of approximately 900mm in diameter. The clocks face east along Scarborough Beach Road, north west up the beach and south-west down the beach.

At its perimeter the roundabout has a grassed strip edged by concrete curbing. Inside this grassed area is a concrete footpath. There are then raised concrete garden beds. These garden beds slope up towards the centre of the roundabout and have sloping concrete walls in a representative wave form. The garden beds are three semicircular portions separated by red brick paved sets of two stairs. To the inner side of the garden beds and following the circular form are approximately 10 concrete and timber bench seats that encircle the clock tower. This area is raised by two steps and brick paved. *Scarborough Clock Tower* is located on this level.

There are several commemorative plaques and crests located on the clock tower. A government plaque commemorating Western Australia's 150 years since Captain James Stirling's settlement of the Swan River Colony is located on the northeast vertical panel, and at the same height on the southeast vertical panel is the Rotary symbol commemorating 75 years of Rotary International. There is a commemorative plaque on the same vertical panel dedicated to a Rotarian, Norman Keith Gillon. Smaller plaques on timber benches surrounding the clock tower are dedicated to other past Rotarians. There is also a time capsule buried below a central concrete block under the clock.

Generally, *Scarborough Clock Tower* and its surrounds are in a good condition; however the precast, sandblasted concrete legs are showing signs of deterioration. In some areas the steel reinforcing is exposed and rusting.

PHYSICAL ASSESSMENT

Condition	Good
Integrity	High
Authenticity	High

HISTORICAL NOTES

Scarborough Clock Tower was constructed in 1979 by the Rotary Club of Scarborough and the City of Stirling to commemorate both the 150th anniversary of colonial settlement in Western Australia and the 75th anniversary of Rotary International. It was designed and constructed by Rotarians with the assistance of the City of Stirling, with much of the labour and materials donated. Since its construction, the Clock Tower has been a prominent landmark on Scarborough Beach and the focus of annual celebrations and commemorative activities.

The Rotary Club of Scarborough was provisionally formed on 5 July 1956 and admitted to Rotary International the following month. By this time, as a result of large-scale development by the State Housing Commission, Scarborough had evolved from a remote, hard to access seaside resort to a rapidly growing suburb with schools, churches and a number of clubs and service groups. Throughout this time, Scarborough Beach remained a popular surfing and swimming beach for local residents, people from the wider Perth area and visitors.

In March 1979, the Rotary Club of Scarborough approached the City of Stirling regarding an 'appropriate project' to commemorate 150 years of white settlement in Western Australia. The Club also wished to commemorate 75 years of Rotary International and felt that a single large project undertaken during 1979 could commemorate both anniversaries. The Club wished to build something of 'grace and beauty' to mark the 'special year'.

The Club suggested that a suitable project might be the construction of a large clock 'in a prominent position on the Scarborough water front' and sought financial and in-kind support from the Council. The Club felt that a clock would be an appropriate way of marking the anniversaries, 'which help us to understand the meaning of time and... are measured by the steady ticking of the clock'.

The Club's approach was considered by the City's Planning Committee, which agreed to participate in the project on a dollar for dollar basis to a maximum of \$10,000.

The tower was designed by architect and Rotarian, Peter O'Toole.

The Governor of Western Australia, Sir Wallace Kyle, officially dedicated the clock tower on 13 September 1979 and unveiled the commemorative plaque. A time capsule was later placed below the centre of the clock.

CONSTRUCTION MATERIALS

Precast sandblasted concrete and stainless steel

IMPORTANT/SIGNIFICANT ASSOCIATIONS

Important for its associations with the Rotary Club of Scarborough and Rotary International.

REFERENCES AND/OR OTHER SOURCES OF INFORMATION

Heritage Council of Western Australia (2007), *Register of Heritage Places – Assessment Documentation, Scarborough Clock Tower*, available from <http://inherit.stateheritage.wa.gov.au/Public/Content/PdfLoader.aspx?id=bdd9baf6-e489-44e3-83a0-af54359af974&type=assessment> accessed 28 August 2015

TPG Town Planning, Urban Design & Heritage (2013), *Scarborough Clock Tower Conservation Management Plan*, prepared for the City of Stirling



IMAGE 2. 'SCARBOROUGH BEACH CLOCK TOWER' JANUARY 1981 (STATE LIBRARY OF WESTERN AUSTRALIA, CALL NO. 312444PD)



IMAGE 3. 'CLOCK TOWER ON THE ESPLANADE, SCARBOROUGH' OCTOBER 1981 (STATE LIBRARY OF WESTERN AUSTRALIA, CALL NO. BA1530/6219)

MRA Scarborough Heritage Inventory - Place Record Form

KOOL KORNER CAFE (fmr)

MRA REF No. 2 / HCWA 09942



IMAGE 1: KOOL KORNER CAFÉ (FMR) VIEW FROM NORTHWEST (2015)

Other Names: The Sandbar, Villa Bianchi, Tyrol Café/Flats

MANAGEMENT LEVEL

LEVEL 2 – PLACE OF LOCAL SIGNIFICANCE

LOCATION

Address: 152 The Esplanade, Scarborough
Land title description: Lots 10 & 11
Scheme Area: Scarborough Redevelopment Scheme
Precinct: Esplanade Precinct

STATEMENT OF SIGNIFICANCE

Kool Korner Café (fmr), a three storey rendered brick residential and commercial building, has cultural heritage significance for the following reasons:

- By virtue of its characteristic curved form and prominent location at the corner of The Esplanade and Scarborough Beach Road, the place is a well-known landmark along Scarborough Beach, and contributes to the character of the area.
- The place is associated with the rapid development of Scarborough Beach in the 1930s as a popular beach resort, and was one of many shops developed along the beachfront to service the short-term visitors and beachgoers.
- The place is believed to be associated with well-known local contractor, Michael Georgeff, who also built the infamous beach cubicles along Scarborough Beach in 1934.
- The place is valued by the community as a longstanding hospitality venue, and is included in the Historic Walking Tour of Scarborough, developed by the City of Stirling

OTHER HERITAGE LISTINGS

State Register	-
Local Government Inventory	Yes
Other	-

DESIRABLE OUTCOME

Place of local significance in its own right and will be afforded a high level of protection through the provisions of the Redevelopment Scheme and Heritage Development Policy.

PHYSICAL DESCRIPTION

Kool Korner Café (fmr) is a three storey building displaying elements of the Inter-War Functionalist style, located on the corner of The Esplanade and Scarborough Beach Road in Scarborough. The building has external walls of rendered masonry and concealed roof behind a parapet wall.

The building addresses both streets with a faceted façade curving around the corner. There are verandahs extending the length of both the first and second floors with balustrades and thin metal pole supports. The upper verandah has a thin, flat concrete roof from which the wall concealing the roof is set well back.

Wide, metal-framed windows comprised of fixed central frames with sliding sashed either side are placed regularly across the first and second floor elevations, with single metal framed doors between every second and third window. The ground floor is also extensively glazed.

PHYSICAL ASSESSMENT

Condition	Good
Integrity	High
Authenticity	High

HISTORICAL NOTES

With the introduction of sealed bitumen roads and the Scarborough beachfront promenade in the early 1930s, Scarborough Beach developed into a popular beach resort. Many shops were developed along the beachfront, particularly to service the short-term visitors and beachgoers.

Kool Korner Café, on the corner of The Esplanade and Scarborough Beach Road, was constructed c.1935 by local contractor Michael Georgeff, who also built the infamous beach cubicles along Scarborough Beach in 1934. The café offered “Appetising Meals served at all hours” with fish and grills advertised as their specialty (1939). Minor additions of a new kitchen at the south-western corner of the building were approved in 1941.

In 1945 proprietor Roderick Phillip Evans was charged with three counts of overcharging and was fined £1 on each, with an additional four counts of not having displayed price tickets for sale accruing fines of 10/ on each.

In 1950, the café appeared largely as originally constructed, and was at this time managed by a Mr Bob Evans.

The shop was later converted to Café Tyrol and by 1953 an additional two storeys were added to provide residential units. In 2001 the place became Villa Bianchi. In 2013 it was rebranded the Sandbar (a restaurant) and the Torchbar (a small bar). In 2015, approval was granted to amalgamate the two tenancies as a tavern under the Sandbar name with some minor amendments to the eastern end of the north elevation.

CONSTRUCTION MATERIALS

Rendered masonry

REFERENCES AND/OR OTHER SOURCES OF INFORMATION

[No heading] (1939, January 27) *The Daily News* (Perth, WA : 1882 - 1950), p. 9. Available from <http://nla.gov.au/nla.news-page8238762> accessed 1 September 2015

"Scarborough Man Overcharged" (1945, October 4), *The Daily News* (Perth, WA : 1882 - 1950), p. 6 Edition: CITY FINAL., available from <http://nla.gov.au/nla.news-article78483868> accessed 1 September 2015

Advertising (1950, March 10), *The Daily News* (Perth, WA : 1882 - 1950), p. 20 Edition: HOME, available from <http://nla.gov.au/nla.news-article83056363> accessed 1 September 2015

"The Kool Korner, Scarborough Beach" [photograph] (February 1951), State Library of Western Australia, Call No. 008344D

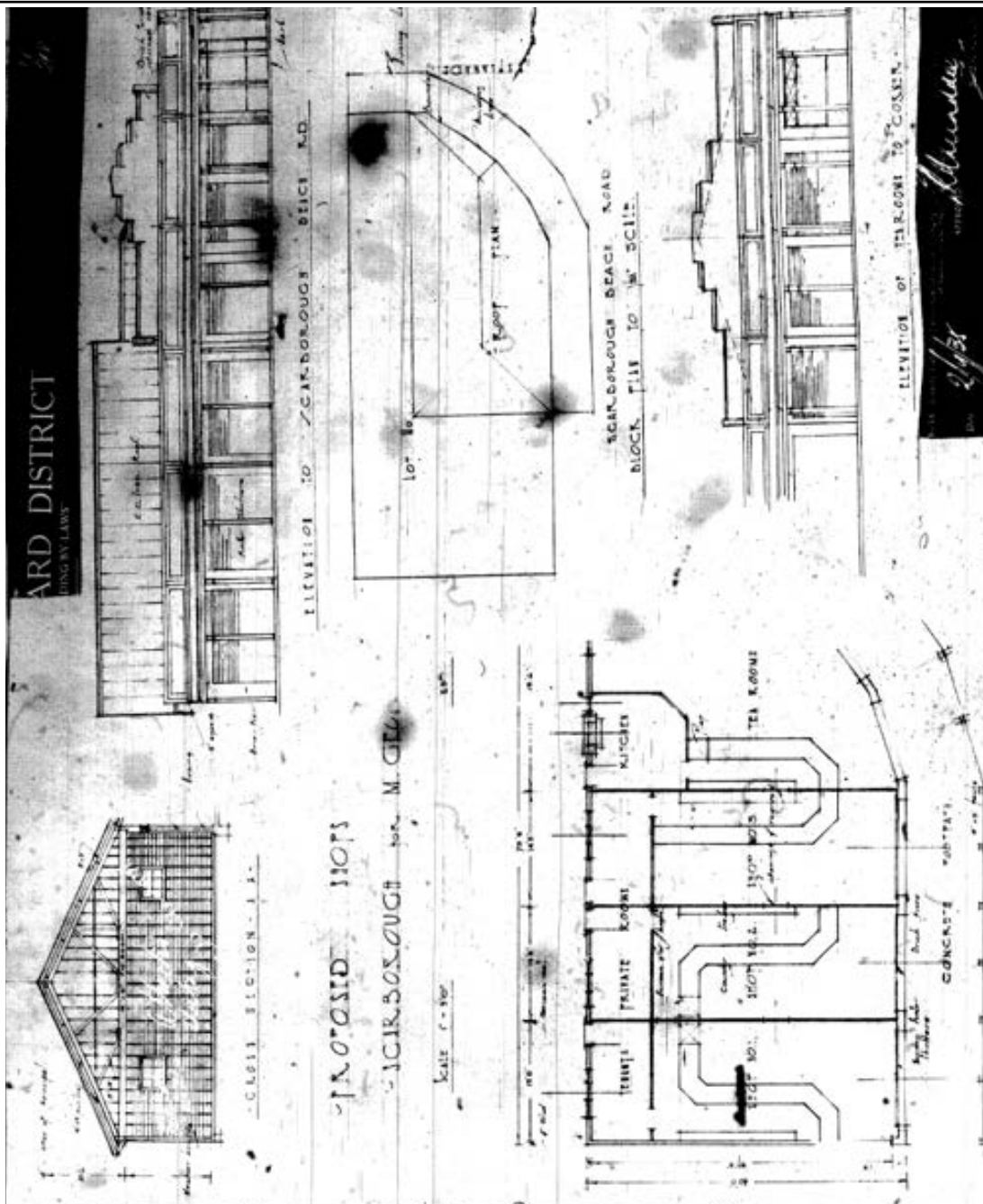


IMAGE 2. BUILDING LICENCE PLANS APPROVED 2 SEPTEMBER 1935 (STATE RECORDS OFFICE)

KOOL KORNER

SCARBOROUGH



Appetising Meals served at all hours. Fish and Grills our specialty. Cool drinks 3/- per $\frac{1}{2}$ dozen

IMAGE 3. KOOL KORNER CAFÉ AS ADVERTISED IN THE DAILY NEWS, 27 JANUARY 1939, P.9

BOB EVANS - KOOL KORNER



SCARBOROUGH

Tel. 13

IMAGE 4. KOOL KORNER CAFÉ AS ADVERTISED IN THE DAILY NEWS, 10 MARCH 1950, P.20



IMAGE 5. KOOL KORNER CAFÉ, FEBRUARY 1951 (STATE LIBRARY OF WESTERN AUSTRALIA, CALL NO. 008344D)



IMAGE 6. HISTORIC AERIAL PHOTOGRAPH OF THE SUBJECT SITE, 1953, LANDGATE (RETRIEVED 2015)



IMAGE 7. SUBJECT PROPERTY AT RIGHT OF IMAGE, C.1950S (CITY OF STIRLING LOCAL STUDIES COLLECTION, CALL NO. LH000375)



IMAGE 8. 'SCARBOROUGH' 11 DECEMBER 1978 (STATE LIBRARY OF WESTERN AUSTRALIA, CALL NO. 268000PD), NORTHERN ELEVATION OF KOOL KORNER CAFÉ (FMR) VISIBLE ON THE FAR LEFT



IMAGE 9. 'SCARBOROUGH, THE ESPLANADE, VIEW SOUTHWARDS TOWARDS SCARBOROUGH BEACH ROAD INTERSECTION' C.1978 (STATE LIBRARY OF WESTERN AUSTRALIA, CALL. NO. BA2397/5)



IMAGE 10. KOOL KORNER CAFÉ, FEBRUARY 1951 (STATE LIBRARY OF WESTERN AUSTRALIA, CALL NO. 008344D)



IMAGE 11. SUBJECT PLACE WESTERN AND SOUTHERN ELEVATIONS (2015)

MRA Scarborough Heritage Inventory - Place Record Form

GRACE STREET SHOPS

MRA REF No. 3



IMAGE 1: NO.82 SCARBOROUGH BEACH ROAD IN THE FOREGROUND, NO. 80 IN THE MIDDLE GROUND AND THE EASTERN END OF NO. 78 VISIBLE AT THE FAR LEFT OF THE IMAGE (2015)

Other Names: The Midway; La Vela Restaurant, MacPherson & Assoc. Accountants, Art Space Collective, Ginger Owl, Sea Jewels, Milk and Paper, L.J. Hooker, Serene Day Spa

MANAGEMENT LEVEL

LEVEL 3 – PLACE OF SOME SIGNIFICANCE

LOCATION

Address: 78-82 Scarborough Beach Road (opposite Grace Street), Scarborough
Land title description: Lots 6, 7 & 8
Scheme Area: Scarborough Redevelopment Scheme
Precinct: Beach Road Precinct

STATEMENT OF SIGNIFICANCE

Grace Street Shops, a group of mid-century brick shops with attached former dwellings, has cultural heritage significance for the following reasons

- The group has aesthetic value as a group of simply detailed mid-century shops with traditional features including recessed entries, rendered and half tiled façades and shop front windows with low sill heights, which make a positive contribution to the Scarborough Beach Road streetscape;
- The group is representative of an important period in Scarborough's early development, as the area matured from a simple holiday destination to a desirable residential suburb with improved services and amenities; and
- The group demonstrates an earlier way of life with the co-location of work and home, which is no longer common.

OTHER HERITAGE LISTINGS

State Register	-
Local Government Inventory	-
Other	-

DESIRABLE OUTCOME

Conservation of the place is highly desirable through adaptive reuse, however proposed partial or full demolition is to be assessed on a case by case basis at the development application stage in accordance with the Redevelopment Scheme and Heritage Development Policy, including a full heritage assessment and impact statement.

Archival Records should be prepared prior to any works being undertaken and Interpretation Strategies should be included in any redevelopment of the site.

PHYSICAL DESCRIPTION

The group comprises a series of shops with former dwellings located on three lots (6, 7 and 8) being No. 78-82 Scarborough Beach Road. The buildings consistently abut the street with a nil-setback and awnings over the footpath. The single storey components have stepped parapet façades; the two storey buildings have hipped tiled roofs with boxed eaves extending forward of the building line.

In particular, the two 2-storey components of the group appear to have been identical in design: both are located on the western half of Lots 7 and 8, respectively, and are each generally symmetrical in appearance. The ground floor accommodates a single commercial tenancy with a central recessed entry and shopfront windows either side. The second storey features two symmetrically placed windows. The brown tiled roofs are a simple hip design with boxed eaves. The buildings are of brick construction with the ground floor featuring decorative tiling to dado height.

The single storey shops at No. 1 and 2/78 and 2 and 3/80 reflect a similar simple mid-century style with stepped parapets, recessed entries, half tiling, and shopfront windows with low sill heights. The entry to No. 1 78 appears to have been altered and is no longer recessed and a second storey has been added above No. 2/80.

All of the façades have been painted, some with decorative murals, and ground floor elevations have generally been rendered above the tiling.

The eastern most shop (No. 2/82) appears to have been contrasted later than the rest of the buildings in the group and whilst sympathetic in its style, exhibits fewer consistent features.

The existing buildings on the site were developed within a relatively short period, being from 1945-c.1960, and despite painting and some alterations to shopfront detailing remain largely intact from this era.

PHYSICAL ASSESSMENT

Condition	Fair - Good
Integrity	Moderate - High
Authenticity	Moderate - High

HISTORICAL NOTES

The two storey brick shop and dwelling (on Lot 7, No. 1/80) appears to have been the first building in the group constructed, with building plans approved on 20 November 1945 for Mr M. D. Wray (owner and builder). The building on the western side of Lot 7 included a shop and office at ground floor, as well as a lounge, living area, and kitchen alcove associated with the dwelling at the rear of the shop, with a wash house and W.C. in the rear lean-to. The building plans show four bedrooms upstairs, a bathroom and W.C. A brick storeroom and garage was also approved on 19 March 1946, at the north-eastern corner of the lot.

Plans for a butcher's shop on the eastern side of Lot 7 (No. 3/80) were approved on 31 July 1946. These indicated a 'future shop' was to be located between the existing two-storey shop and dwelling and the butcher's shop the subject of this approval.

In 1953, all buildings except the eastern-most shop had been constructed. The last shop was constructed by 1965.

An owner of one of the properties indicated that the group of shops has been known since as early as 1967 as 'The Midway' reflecting its location approximately half way between the Doubleview hill and the beach, at the point where people travelling west can see the first glimpse of the ocean. This is considered to reflect the long-standing landmark value of the place.

The buildings continue to be used as shops today.

CONSTRUCTION MATERIALS

Rendered masonry and tile

REFERENCES AND/OR OTHER SOURCES OF INFORMATION

Historic building licence plans, State Records Office

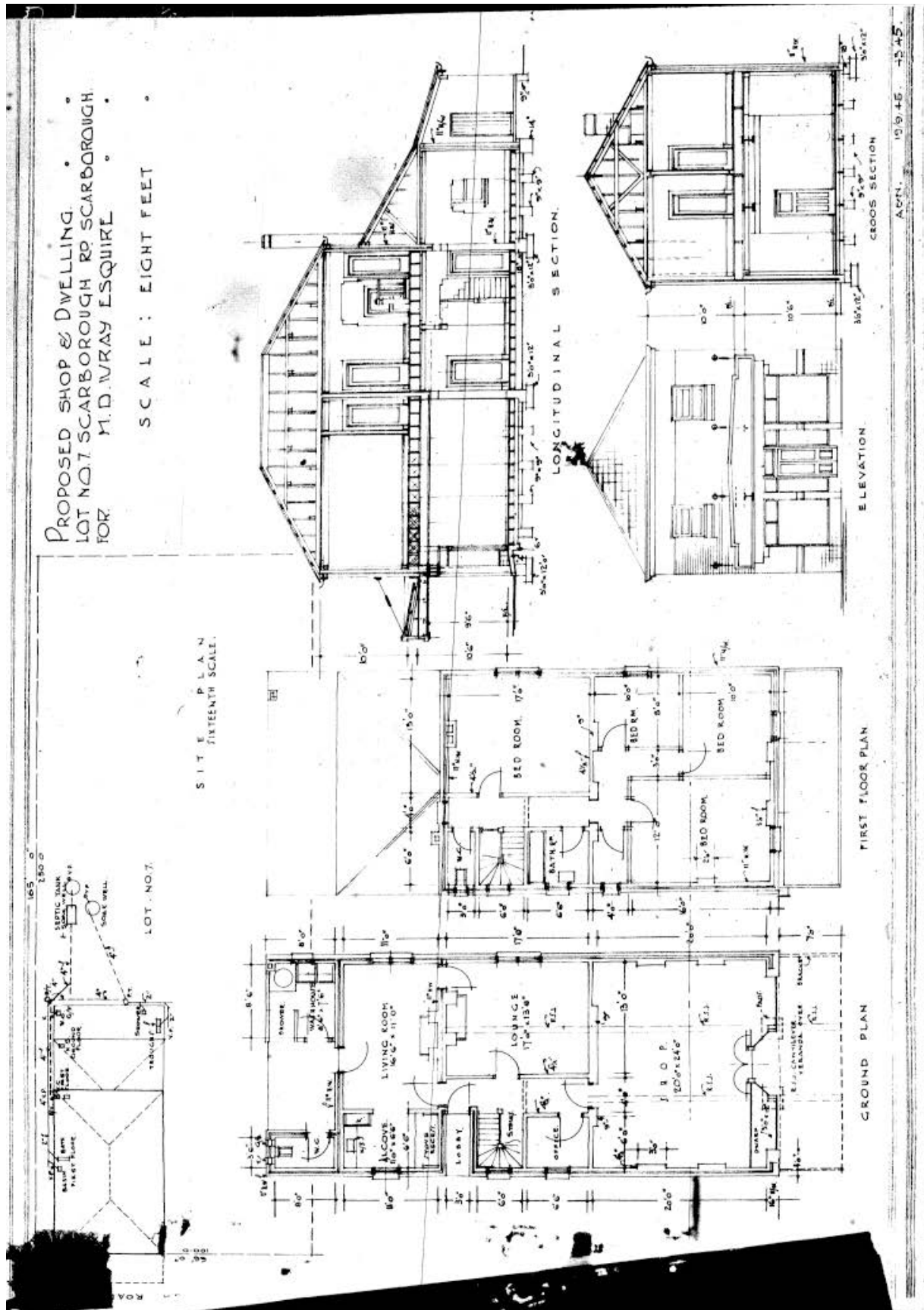


IMAGE 2. BUILDING LICENCE PLANS FOR LOT 7 APPROVED 20 NOVEMBER 1945, STATE RECORDS OFFICE



IMAGE 4. VIEW OF SHOPS FROM SOUTHWEST (NO. 78 IN FOREGROUND) (2015)



IMAGE 5. ORIGINAL SHOPSFRONT OF NO. 80 WITH RECESSED ENTRY AND DECORATIVE TILING (2015)



IMAGE 6. ORIGINAL SHOPSFRONT OF NO. 82 WITH RECESSED ENTRY AND DECORATIVE TILING (2015)

MRA Scarborough Heritage Inventory - Place Record Form

PARINGA FLATS (fmr)

MRA REF No. 4



IMAGE 1: PARINGA FLATS (FMR) VIEW FROM SOUTHWEST (2015)

Other Names: Indigo Backpackers

MANAGEMENT LEVEL

LEVEL 4 – HISTORIC SITE

LOCATION

Address: 254-256 West Coast Highway (cnr. Brighton Road), Scarborough
Land title description: Lots 1 & 18
Scheme Area: Scarborough Redevelopment Scheme
Precinct: Beach Road Precinct

STATEMENT OF SIGNIFICANCE

Paringa Flats (fmr), the site of a two storey Inter-War corner shop with attached hostel, has cultural heritage significance for the following reasons:

- As a substantial early building on a prominent corner location the place was a local landmark that was valued by the community.
- The place has aesthetic value as a building that displayed elements of the Inter War Art Deco architectural style, which until its demolition in 2015, presented largely as originally constructed and retained much of its original albeit simple detailing.
- As a building designed for short stay accommodation that continued to be used as such up until recent times, the place is representative of Scarborough's early and ongoing development as a desirable coastal holiday destination.

OTHER HERITAGE LISTINGS

State Register	-
Local Government Inventory	-
Other	-

DESIRABLE OUTCOME

A historic site with few or no built features which should be retained as a record in the Inventory for archival purposes. The significance should be recognised through interpretation in any redevelopment of the site.

PHYSICAL DESCRIPTION

Paringa Flats (fmr), a two storey brick and tile building with elements of the Inter war Art Deco style, comprised of a corner commercial building with a two-storey parapet and truncated corner in rendered masonry, and attached residential component setback from both street frontages with verandahs and balconies to north, west and south elevations (some sections later enclosed).

The corner component featured a simple parapet with stepped features to both street frontages and a sloped pediment to the corner truncation. The walls were of rendered masonry with ruled blockwork effect. A narrow awning sat above window height of the second storey supported by stepped masonry brackets. The original entry, which was later enclosed, addressed the corner. Two windows were located on ground and first floor levels on either street facing elevation, except for the ground floor southern elevation which had a single window. The first floor windows on the southern elevation, extant in 2015, appeared to be the original timber sash windows. All other windows had been replaced with simple aluminium framed windows. An awning that previously was located above ground floor level over the adjacent footpath had since been removed.

The residential component was a two storey brick building which appeared to have originally been face-brickwork, but had since been painted. The hipped tiled roof extended over the balconies at first floor level with exposed eaves. The balcony on the western elevation had been enclosed with masonry and aluminium framed windows. The rear (eastern) portions of the upper floor balconies on both the northern and southern elevations had also been enclosed with timber weatherboard. Timber sash windows and timber panelled doors with 6-panel glazing remained evident, as at July 2015, on the upper floor of the southern elevation.

The residential component originally reflected the Inter War Old English architectural style, with dark timber beams contrasting with light-coloured infill panels and a deep timber shingled or weatherboard fascia separating the ground and first floor, however the features of this style had been covered by infill as at July 2015.

The buildings were demolished in September 2015; no built features remain on site.

PHYSICAL ASSESSMENT

Condition	-
Integrity	-
Authenticity	-

HISTORICAL NOTES

Paringa Flats (fmr), a two storey brick and tile building, was constructed in 1934 at the corner of West Coast Highway (formerly Lillian Street) and Brighton Road for Mrs H.S. Pike at a cost of £3,300. The building incorporated two main components: a corner shop and attached residential component behind. The shop addressed the intersection, with dimensions of approximately 20 by 21 feet, truncated at the south-western corner.

The residential component was designed for multiple tenants with separate quarters and facilities. The ground floor included four kitchens and living areas arranged either side of a central corridor. The corridor leads from the front entrance facing West Coast Highway to the rear verandah, from which bathrooms and W.C.s were accessed. Each of the living areas could be accessed from doors directly from the side verandahs. A four car garage and ladies' and gents' dressing rooms were located in a separate building to the east (still extant). Plans for the first floor could not be located, however there is no evidence to suggest that the second storey is a later addition.

In 1936, a G. Armstrong was listed as the manager of Paringa Flats, however by 1939 Mrs Pike had taken over as proprietress. At this time, an illustrated advertisement appeared in *The Daily News* depicting the two-storey 'Paringa Flats and Tea Rooms' largely as the building appears today, advertising "Excellent Accommodation" in fully furnished flats with linen and cutlery supplied, free laundry and tennis court at a weekly rate of £1/1/ per person.

In 2015, a development application was received proposing the demolition of the existing buildings and construction of a nine storey mixed use development, incorporating a component of short stay accommodation. As the building was not afforded statutory protection under any heritage listing at the time, its retention was not mandatory and a demolition permit was issued by the City of Stirling on 5 August 2015. The short stay accommodation in the new development provides an interpretation of the site's former use.

CONSTRUCTION MATERIALS

-

REFERENCES AND/OR OTHER SOURCES OF INFORMATION

[No heading] (1939, January 27) *The Daily News* (Perth, WA : 1882 - 1950), p. 9. Available from <http://nla.gov.au/nla.news-page8238762> accessed 1 September 2015

Historic Building Licence plans, State Records Office

PARINGA FLATS

SCARBOROUGH.

MRS. H. S. PIKE, Proprietress.



Excellent Accommodation. Fully Furnished Flats. Linen
and Cutlery Supplied. Laundry Free. Tennis Court.

Tariff: £1/1/ per week per person.

TEL. SCARBOROUGH 7.

MRA Scarborough Heritage Inventory - Place Record Form

COYNE'S STORE (fmr)

MRA REF No. 5



IMAGE 1: COYNE'S STORE (FMR) VIEW FROM SOUTHWEST (TPG, 2013)

Other Names: Spot Cash Store; Malz Deli

MANAGEMENT LEVEL

LEVEL 4 – HISTORIC SITE

LOCATION

Address: 30 Brighton Road (cnr. Hastings Street), Scarborough

Land title description: Lot 46

Scheme Area: Scarborough Redevelopment Scheme

Precinct: Beach Road Precinct

STATEMENT OF SIGNIFICANCE

Coyne's Store (fmr), an Inter-War masonry corner store has cultural heritage significance for the following reasons:

- The place has some aesthetic value as a modest corner shop located in a prominent location, close to the beach, and despite some modification its original form and parapet details remain extant and contribute to the historic charm of the building.
- The place is associated with the early development of Scarborough foreshore as a popular venue for entertainment and recreation in the 1930s and '40s, and was established to service the growing number of local residents as well as the influx of casual beach visitors.
- The place is valued by the local community as a well-known and long-established convenience store, located in close proximity to the beach.

OTHER HERITAGE LISTINGS

State Register	-
Local Government Inventory	Yes
Other	-

DESIRABLE OUTCOME

A historic site with few or no built features which should be retained as a record in the Inventory for archival purposes. The significance should be recognised through interpretation in any redevelopment of the site.

PHYSICAL DESCRIPTION

The former Coyne's Store is located on the northwest corner of the intersection of Brighton Road and Hastings Street, Scarborough, with its entrance facing southeast. The building comprises of a single storey masonry corner shop with rendered and painted brick parapet walls concealing a skillion corrugated iron roof beyond. The parapet steps up in height on the eastern elevation towards the central corner wall, where the entry door is located, and incorporates recessed horizontal bands in the masonry wrapping around the full extent of the parapets. The main door is a recent set of timber-framed glazed doors and to Brighton Road there are recent bi-fold windows. The southern walls have white, red and blue ceramic tiles to dado height with painted masonry above. The building also incorporates a store room on its north-eastern corner, facing Hastings Street.

Other buildings previously on the site, including a timber framed fibrous cement (asbestos) clad dwelling, a fibrous cement W.C. and a number of metal storage sheds have recently been removed.

PHYSICAL ASSESSMENT

Condition	-
Integrity	-
Authenticity	-

HISTORICAL NOTES

Building licence plans dated 1940, for an awning addition confirm that the corner shop was extant at this time. In 1945, a Building Licence was approved for the addition of a wood and asbestos dwelling behind the existing brick shop for Oswald Maurice Everard Wearne. Title documents provided by the owner (as at 2014) indicate that part Lot 46, on the corner of Brighton Road and Hastings Street, was owned by Wearne of Hammersley Road Subiaco from July 1934 until 1953.

A number of shopkeepers set up business in Scarborough in the mid-1930s, including Wearne, the grocer, who is purported to have opened a Spot Cash Store on this site around 1939.

Wearne was known to pioneer the grocery business in the area, collecting orders from local residents and delivering them the next day. He was also known to have donated money for the first reel at the Brighton Road beach for use by the Scarborough Surf Lifesaving Club.

According to a Wise Post Office Directory, O.M. Wearne operated a grocery store from sites in both "Wembley Park" and Nedlands during the early 1930s, before being listed in Brighton Road, Scarborough in 1945. A 'Mrs. Wearne' is noted at an address on Hastings Street in 1940 however in 1949, O.M. Wearne and Leslie Wearne are both identified at the Scarborough address on the corner of Hastings Street and Brighton Road, suggesting the Wearne grocery business operated from these premises throughout the 1940s.

Title documents indicate that the property was purchased by William Patrick Coyne in November 1953 and subsequently owned jointly by him and his wife Marion Rose Coyne from 1982. The property was purchased from Marion Coyne (as William Patrick is deceased) in 2015 by Seaside West Pty Ltd.

In 2015, a development application was approved for the redevelopment of the site to include 100 residential apartments and a ground floor café in the location of the corner shop. Approval was granted for the parapet walls of the shop to be deconstructed and reconstructed to match the original detailing (except for some new openings on the eastern elevation), subject to an archival record being prepared prior to any works commencing. At the date of this assessment the shop was still extant.

CONSTRUCTION MATERIALS

Rendered masonry and corrugated metal

REFERENCES AND/OR OTHER SOURCES OF INFORMATION

City of Stirling Heritage List Place Record Form 9.006 (2014)

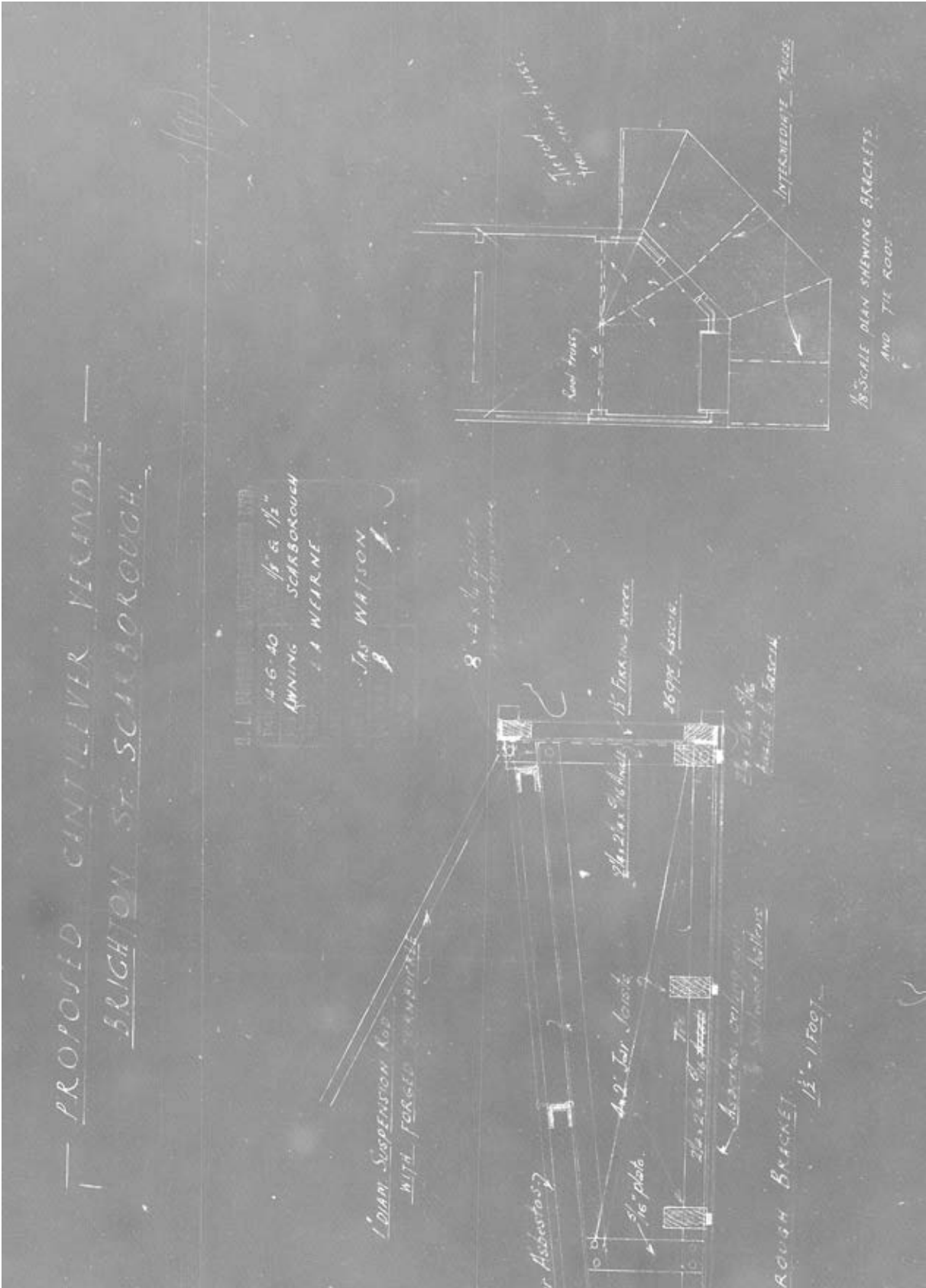


IMAGE 2. BUILDING LICENCE PLANS FOR AN AWNING ADDITION TO THE EXISTING SHOP DATED 1940 (STATE RECORDS OFFICE)

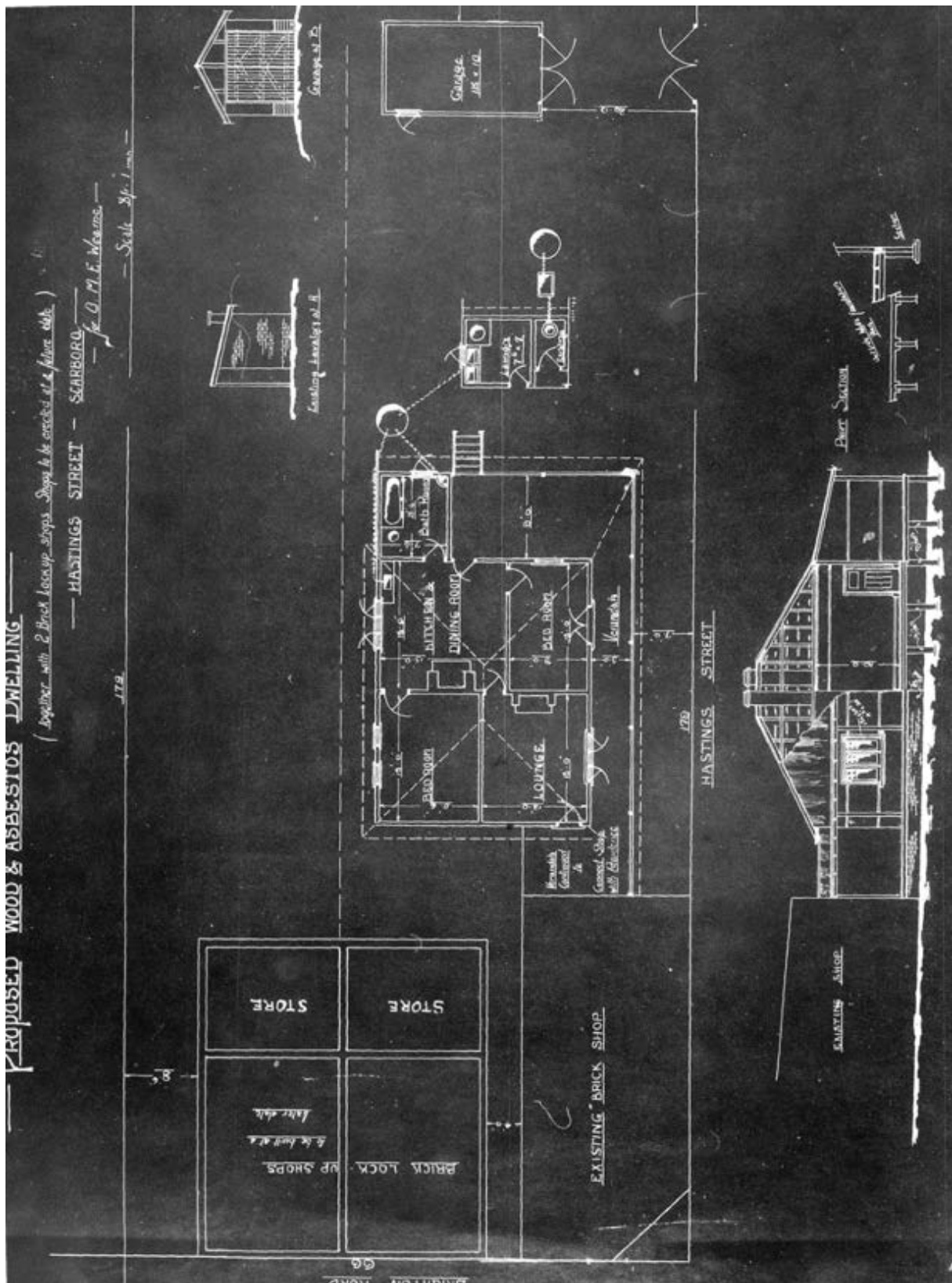


IMAGE 3. BUILDING LICENCE PLANS FOR THE PROPOSED DWELLING BEHIND THE SHOP DATED 1945 (STATE RECORDS OFFICE)



IMAGE 4. SUBJECT PLACE C.1950S (IMAGE IN SUBMISSION TO THE CITY OF STIRLING OBJECTING TO THE PROPOSED HERITAGE LISTING PREPARED BY ROSEMARY ROSARIO, 2014. (IMAGE REFERENCE ACKNOWLEDGED MARION COYNE)



IMAGE 5. SUBJECT PLACE C.1996 (CITY OF STIRLING LIBRARY)



IMAGE 6. WESTERN ELEVATIONS (TPG, 2014)



IMAGE 7. EASTERN ELEVATION (TPG, 2014)

MRA Scarborough Heritage Inventory - Place Record Form

LUNA PARK (fmr)

MRA REF No. 6



IMAGE 1: LUNA PARK (FMR) SHOPPING CENTRE NORTHERN ELEVATION FROM SCARBOROUGH BEACH ROAD (2015)

Other Names: Luna Shopping Centre

MANAGEMENT LEVEL

LEVEL 4 – HISTORIC SITE

LOCATION

Address: No. 241 West Coast Highway (cnr Scarborough Beach Road), Scarborough
Land title description: Lot 401
Scheme Area: Scarborough Redevelopment Scheme
Precinct: Esplanade Precinct

STATEMENT OF SIGNIFICANCE

Luna Park (fmr), the site of a former amusement park, has cultural heritage significance for the following reasons:

- The place is associated with the early development of the Scarborough foreshore as a popular venue for entertainment and recreation, and along with nearby businesses, was a popular attraction especially for young people, for nearly 40 years.
- The place is valued by the community as a long-standing venue for social recreation, which features strongly in social histories of the area.

OTHER HERITAGE LISTINGS

State Register -
Local Government Inventory Yes
Other -

DESIRABLE OUTCOME

A historic site with few or no built features which should be retained as a record in the Inventory for archival purposes. The significance should be recognised through interpretation in any redevelopment of the site.

PHYSICAL DESCRIPTION

The historic site is located at the southwest corner of the intersection of Scarborough Beach Road and West Coast Highway, and is currently occupied by a single storey commercial building. The site is located opposite the Rendezvous Hotel (to the north) and adjacent to Tyrol Flats (to the west) with its entrance facing the street (Scarborough Beach Road) on the north elevation.

PHYSICAL ASSESSMENT

Condition	-
Integrity	-
Authenticity	-

HISTORICAL NOTES

In November 1939 Luna Park was opened by Mr A.L. Green, manager and engineer, on approximately two acres of land at the site of the current Luna Shopping Centre at the corner of West Coast Highway and Scarborough Beach Road.

The entrance to Luna Park was in the form of a huge face, which was illuminated at night.

Attractions included "the latest and most sensational riding devices imported to Australia" such as electric dodge-'em cars (10 at a cost of £110 each), flying boats and the "Gee Whiz", as well as archery, a shooting gallery, dance palais, games and novelties.

In the early 1940s, despite the onset of World War II, the proprietors continued to expand their facilities and also conducted summer Sunday night concerts on the beach, from a pavilion erected for that purpose. Scarborough continued to attract visitors during the war and by 1943 Luna Park was open all year round, being a major drawcard for American and other servicemen.

Luna Park, combined with other nearby attractions such as the beach, the Snake Pit and Peters by the Sea, continued to attract young people to Scarborough well into the 1960s, until it was closed in 1972 and demolished the same year.

A supermarket and shopping centre development on the site during the early 1980s involved the interpretation of the original Park (through its name), but none of the original fabric remains.

CONSTRUCTION MATERIALS

-

REFERENCES AND/OR OTHER SOURCES OF INFORMATION

'Riding the Surf at Scarborough: West's Waikiki Beach' (29 October 1939), *Sunday Times* (Perth, WA 1902-1954), p. 24, available from <http://nla.gov.au/nla.news-page43-4091> accessed 28 August 2014



IMAGE 2. LUNA PARK (FMR) ENTRY AT THE CORNER OF SCARBOROUGH BEACH ROAD AND WEST COAST HIGHWAY, DATE UNKNOWN (CITY OF STIRLING LOCAL STUDIES COLLECTION, PHOTO NO. 000361)



IMAGE 3. HISTORIC AERIAL PHOTOGRAPH OF LUNA PARK, 1965, LANDGATE (RETRIEVED 2015)



IMAGE 4. COLOURED FENCE AND TENTS OF LUNA PARK VISIBLE IN BACKGROUND, C.1950S (CITY OF STIRLING LOCAL STUDIES COLLECTION, CALL NO. LH000375)



IMAGE 5. ENTRANCE GATES TO LUNA PARK DURING DEMOLITION, 1972 (CITY OF STIRLING LOCAL STUDIES COLLECTION, CALL NO. LH000362)



Phone (08) 6557 0700

Facsimile (08) 9281 6020

Email reception@mra.wa.gov.au

TWITTER/ [@VitalPerth](https://twitter.com/VitalPerth) FACEBOOK.COM/ [perthculturalcentre](https://www.facebook.com/perthculturalcentre)

Postal address Locked Bag 8, Perth Business Centre WA 6849