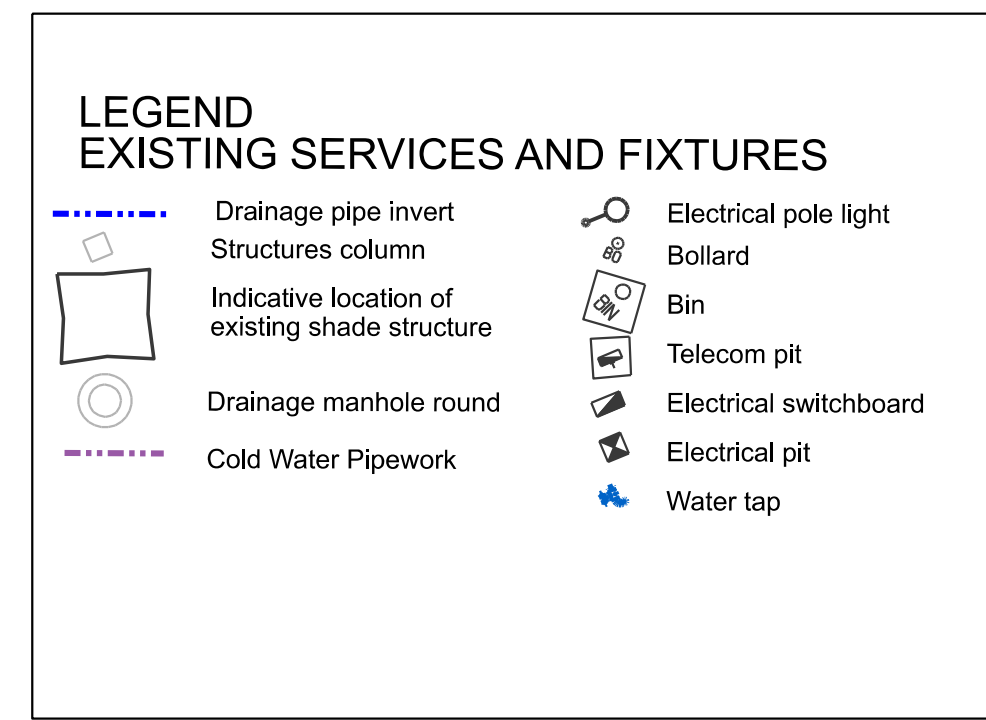
[illegible]



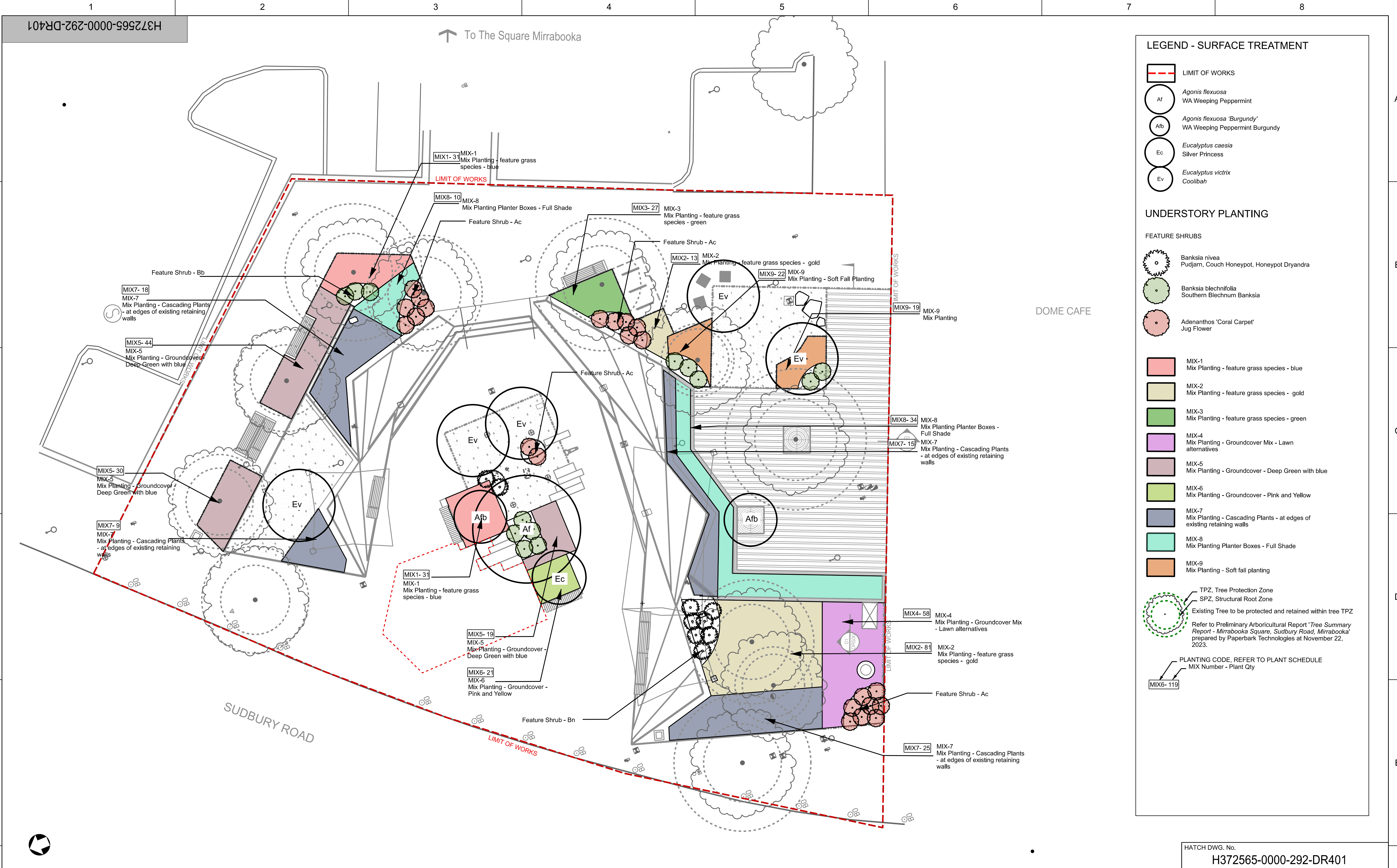
HATCH

	ROLE	NAME	SIGNATURE	DATE
	DRAWING APPROVAL STATUS: For Council Review			

LANDSCAPE
SURFACE PLAN

REV
D
SIZE: A1

		THIS DRAWING WAS PREPARED FOR THE EXCLUSIVE USE OF SUN CABLE MANUFACTURING PTY LTD, ACN 647 564 323 ("CLIENT") AND ISSUED PURSUANT TO CONTRACTS BETWEEN THE CLIENT AND HATCH PTY. ABN 59 006 630 500 ("HATCH"). UNLESS OTHERWISE AGREED IN WRITING WITH THE CLIENT OR SPECIFIED IN THIS DOCUMENT, (A) HATCH DOES NOT ACCEPT AND DISCLAIMS ANY AND ALL LIABILITY OR RESPONSIBILITY ARISING FROM ANY USE OF OR RELIANCE ON THIS DRAWING BY ANY THIRD PARTY OR ANY IMITATION OR MISUSE OF THIS DRAWING BY THE CLIENT, AND (B) THIS DRAWING IS CONFIDENTIAL AND ALL INTELLECTUAL PROPERTY RIGHTS EMBODIED OR REFERENCED IN THIS DRAWING REMAIN THE PROPERTY OF HATCH.			
D	100% DRAWING		HL	BR	05.09.21
C	IFC UPDATE		HL	BR	22.06.21
B	IFC - FOR ENGINEER REVIEW ONLY		HL	BR	31.07.21
A	85% DRAFT FOR CLIENT REVIEW		HL	BR	24.06.21
No.	DESCRIPTION	BY	CHK'D	DATE	
REVISIONS					



LEGEND - SURFACE TREATMENT

— — —

LIMIT OF WORKS

Af

Agonis flexuosa

WA Weeping Peppermint

Afb

Agonis flexuosa 'Burgundy'

WA Weeping Peppermint Burgundy

Ec

Eucalyptus caesia

Silver Princess

Ev

Eucalyptus victrix

Coolibah

UNDERSTORY PLANTING

FEATURE SHRUBS

Banksia nivea

Pudjari, Couch Honey, Honey, Dryandra

Banksia blechnifolia

Southern Blechnum Banksia

Adenanthos 'Coral Carpet'

Jug Flower

MIX-1

Mix Planting - feature grass species - blue

MIX-2

Mix Planting - feature grass species - gold

MIX-3

Mix Planting - feature grass species - green

MIX-4

Mix Planting - Groundcover Mix - Lawn alternatives

MIX-5

Mix Planting - Groundcover - Deep Green with blue

MIX-6

Mix Planting - Groundcover - Pink and Yellow

MIX-7

Mix Planting - Cascading Plants - at edges of existing retaining walls

MIX-8

Mix Planting Planter Boxes - Full Shade

MIX-9

Mix Planting - Soft fall planting

TPZ, Tree Protection Zone

SPZ, Structural Root Zone

Existing Tree to be protected and retained within tree TPZ

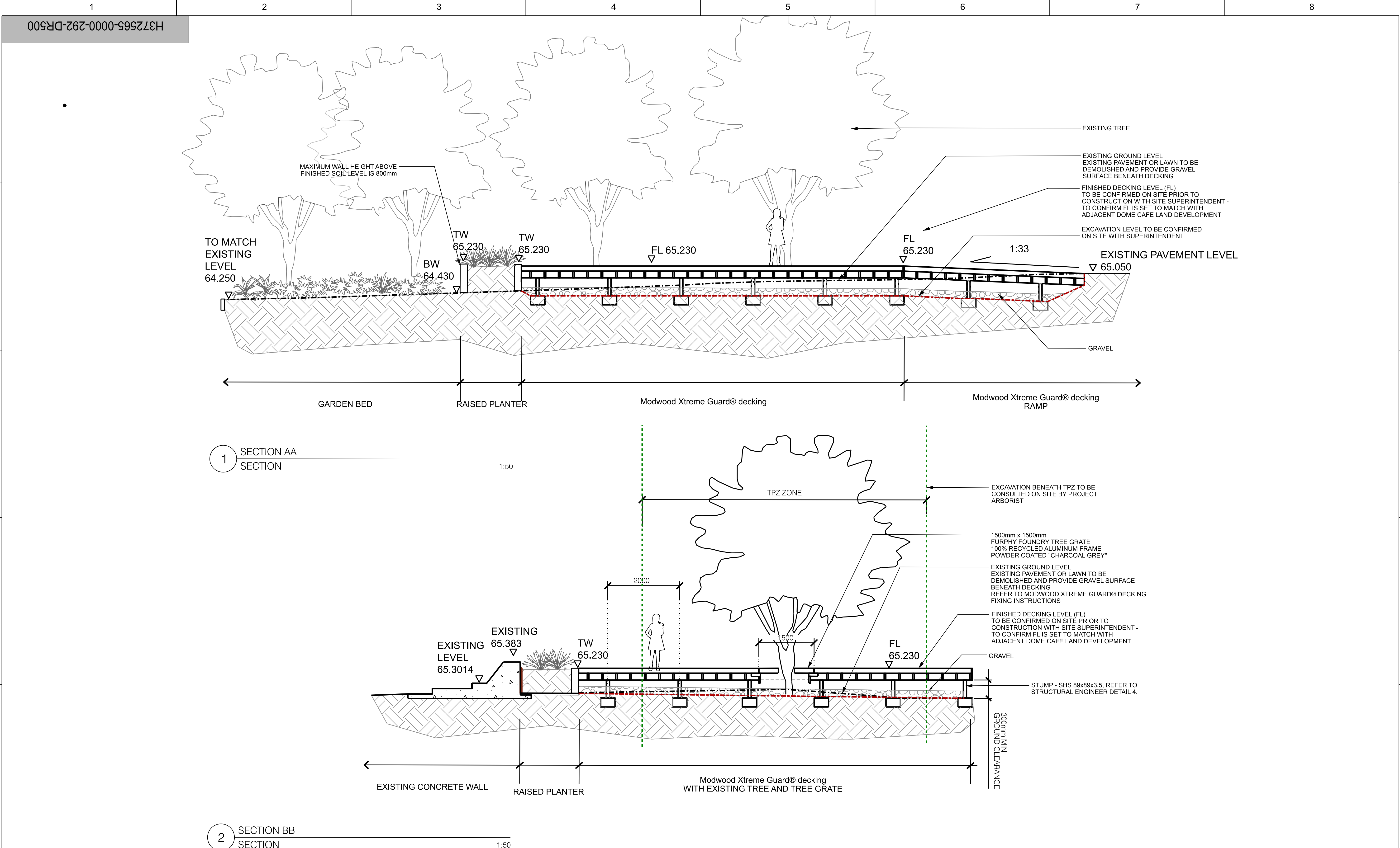
Refer to Preliminary Arboricultural Report 'Tree Summary Report - Mirrabooka Square, Sudbury Road, Mirrabooka' prepared by Paperbark Technologies at November 22, 2023.

PLANTING CODE, REFER TO PLANT SCHEDULE

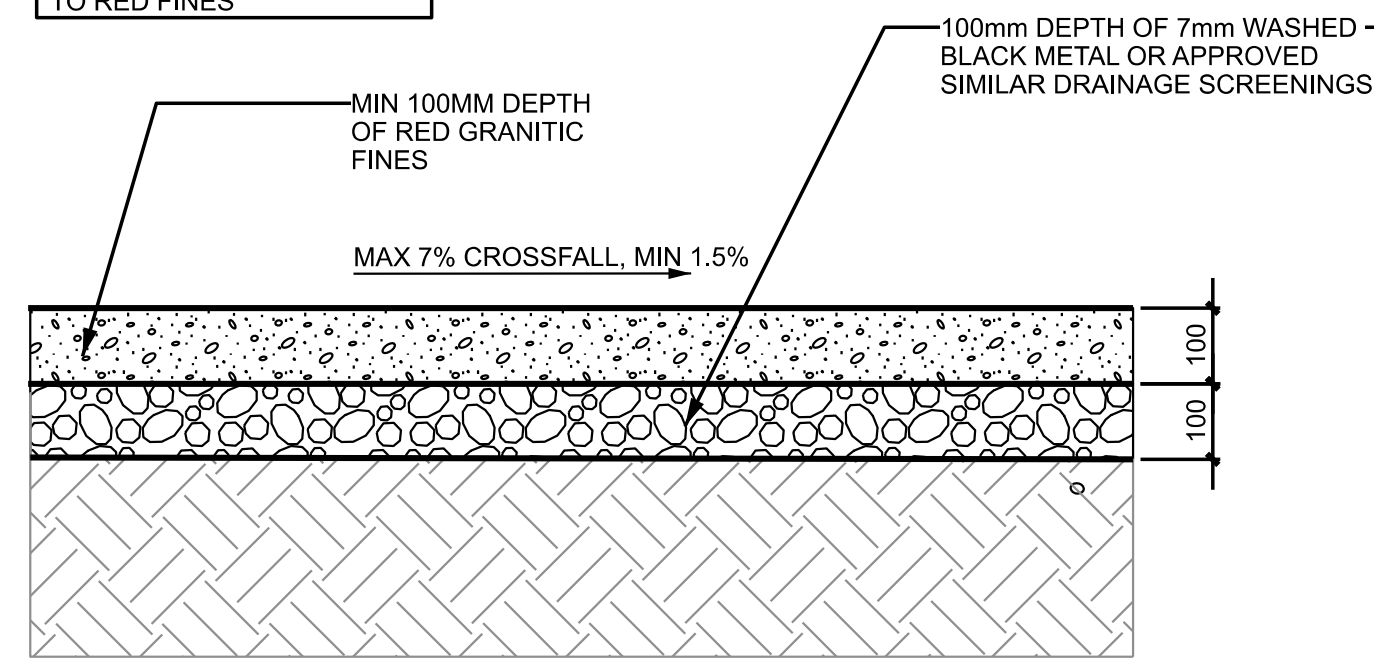
MIX Number - Plant Qty

MIX6- 119

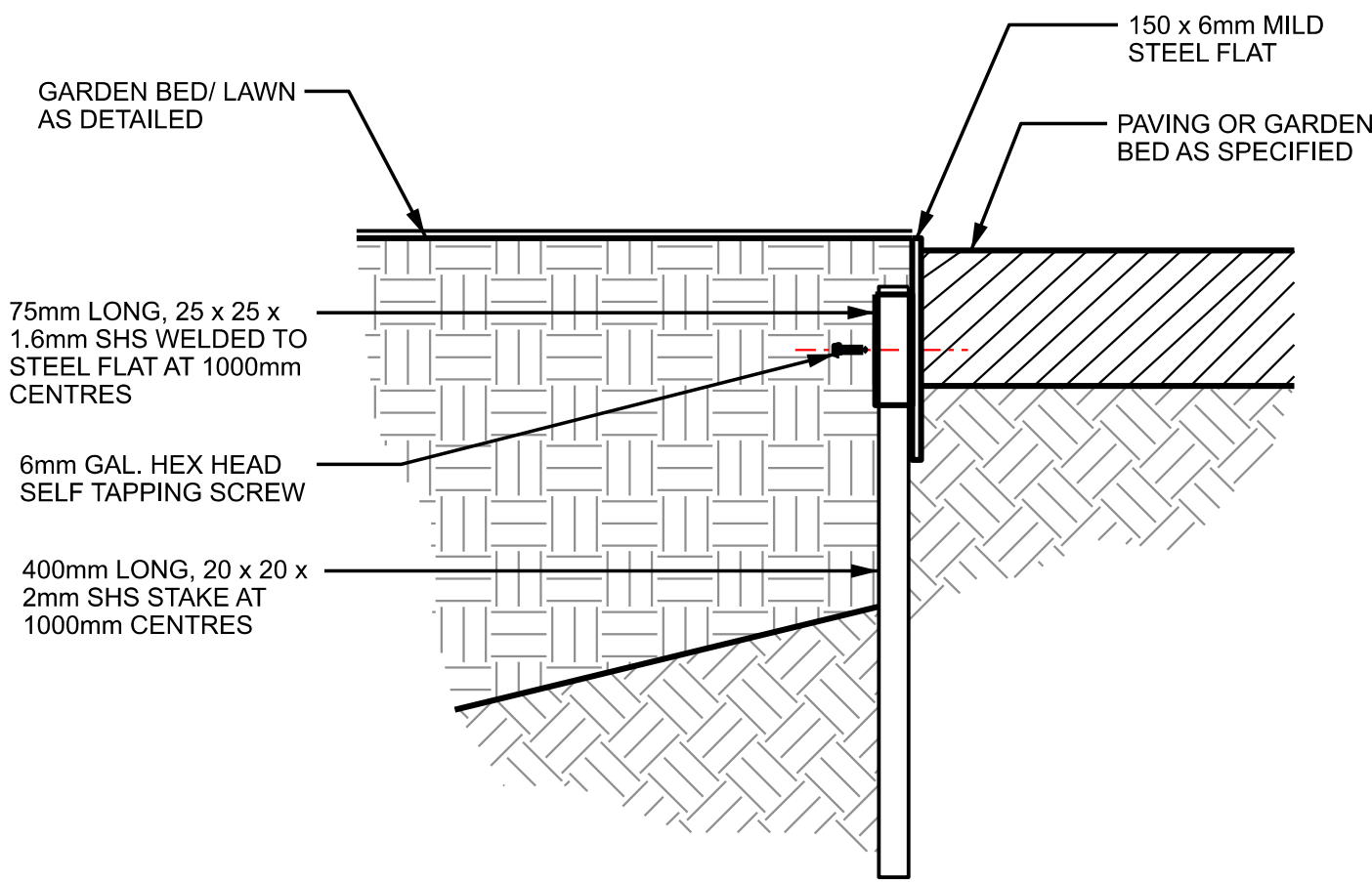
HATCH DWG. No. H372565-0000-292-DR401		MIRRABOOKA TOWN SQUARE 16 SUDBURY ROAD, MIRRABOOKA WA		LANDSCAPE PLANTING PLAN		SCALE 1:100 OR AS NOTED		DWG. No. H372565-0000-292-DR401		REV D	
DRAFTSPERSON H. LI NR 14.06.24		DESIGNER H. LI NR 14.06.24		CHECKER B. RYAN 14.06.24		DESIGN COORD. A. BRODIE 14.06.24		RESP. ENG.		LEAD DISC. ENG.	
D		100% DRAWING		C		IFC UPDATE		B		IFC - FOR ENGINEER REVIEW ONLY	
A		85% DRAFT FOR CLIENT REVIEW		No.		DESCRIPTION		BY		CHK'D	
D		100% DRAWING		C		IFC UPDATE		B		IFC - FOR ENGINEER REVIEW ONLY	
A		85% DRAFT FOR CLIENT REVIEW		No.		DESCRIPTION		BY		CHK'D	
D		100% DRAWING		C		IFC UPDATE		B		IFC - FOR ENGINEER REVIEW ONLY	
A		85% DRAFT FOR CLIENT REVIEW		No.		DESCRIPTION		BY		CHK'D	
D		100% DRAWING		C		IFC UPDATE		B		IFC - FOR ENGINEER REVIEW ONLY	
A		85% DRAFT FOR CLIENT REVIEW		No.		DESCRIPTION		BY		CHK'D	
D		100% DRAWING		C		IFC UPDATE		B		IFC - FOR ENGINEER REVIEW ONLY	
A		85% DRAFT FOR CLIENT REVIEW		No.		DESCRIPTION		BY		CHK'D	
D		100% DRAWING		C		IFC UPDATE		B		IFC - FOR ENGINEER REVIEW ONLY	
A		85% DRAFT FOR CLIENT REVIEW		No.		DESCRIPTION		BY		CHK'D	
D		100% DRAWING		C		IFC UPDATE		B		IFC - FOR ENGINEER REVIEW ONLY	
A		85% DRAFT FOR CLIENT REVIEW		No.		DESCRIPTION		BY		CHK'D	
D		100% DRAWING		C		IFC UPDATE		B		IFC - FOR ENGINEER REVIEW ONLY	
A		85% DRAFT FOR CLIENT REVIEW		No.		DESCRIPTION		BY		CHK'D	
D		100% DRAWING		C		IFC UPDATE		B		IFC - FOR ENGINEER REVIEW ONLY	
A		85% DRAFT FOR CLIENT REVIEW		No.		DESCRIPTION		BY		CHK'D	
D		100% DRAWING		C		IFC UPDATE		B		IFC - FOR ENGINEER REVIEW ONLY	
A		85% DRAFT FOR CLIENT REVIEW		No.		DESCRIPTION		BY		CHK'D	
D		100% DRAWING		C		IFC UPDATE		B		IFC - FOR ENGINEER REVIEW ONLY	
A		85% DRAFT FOR CLIENT REVIEW		No.		DESCRIPTION		BY		CHK'D	
D		100% DRAWING		C		IFC UPDATE		B		IFC - FOR ENGINEER REVIEW ONLY	
A		85% DRAFT FOR CLIENT REVIEW		No.		DESCRIPTION		BY		CHK'D	
D		100% DRAWING		C		IFC UPDATE		B		IFC - FOR ENGINEER REVIEW ONLY	
A		85% DRAFT FOR CLIENT REVIEW		No.		DESCRIPTION		BY		CHK'D	
D		100% DRAWING		C		IFC UPDATE		B		IFC - FOR ENGINEER REVIEW ONLY	
A		85% DRAFT FOR CLIENT REVIEW		No.		DESCRIPTION		BY		CHK'D	
D		100% DRAWING		C		IFC UPDATE		B		IFC - FOR ENGINEER REVIEW ONLY	
A		85% DRAFT FOR CLIENT REVIEW		No.		DESCRIPTION		BY		CHK'D	
D		100% DRAWING		C		IFC UPDATE		B		IFC - FOR ENGINEER REVIEW ONLY	
A		85% DRAFT FOR CLIENT REVIEW		No.		DESCRIPTION		BY		CHK'D	
D		100% DRAWING		C		IFC UPDATE		B		IFC - FOR ENGINEER REVIEW ONLY	
A		85% DRAFT FOR CLIENT REVIEW		No.		DESCRIPTION		BY		CHK'D	
D		100% DRAWING		C		IFC UPDATE		B		IFC - FOR ENGINEER REVIEW ONLY	
A		85% DRAFT FOR CLIENT REVIEW		No.		DESCRIPTION		BY		CHK'D	
D		100% DRAWING		C		IFC UPDATE		B		IFC - FOR ENGINEER REVIEW ONLY	
A		85% DRAFT FOR CLIENT REVIEW		No.		DESCRIPTION		BY		CHK'D	
D		100% DRAWING		C		IFC UPDATE		B		IFC - FOR ENGINEER REVIEW ONLY	
A		85% DRAFT FOR CLIENT REVIEW		No.		DESCRIPTION		BY		CHK'D	
D		100% DRAWING		C		IFC UPDATE		B		IFC - FOR ENGINEER REVIEW ONLY	
A		85% DRAFT FOR CLIENT REVIEW		No.		DESCRIPTION		BY		CHK'D	
D		100% DRAWING		C		IFC UPDATE		B		IFC - FOR ENGINEER REVIEW ONLY	
A		85% DRAFT FOR CLIENT REVIEW		No.		DESCRIPTION		BY		CHK'D	
D		100% DRAWING		C		IFC UPDATE		B		IFC - FOR ENGINEER REVIEW ONLY	
A		85% DRAFT FOR CLIENT REVIEW		No.		DESCRIPTION		BY		CHK'D	
D		100% DRAWING		C		IFC UPDATE		B		IFC - FOR ENGINEER REVIEW ONLY	
A		85% DRAFT FOR CLIENT REVIEW		No.		DESCRIPTION		BY		CHK'D	
D		100% DRAWING		C		IFC UPDATE		B		IFC - FOR ENGINEER REVIEW ONLY	
A		85% DRAFT FOR CLIENT REVIEW		No.		DESCRIPTION		BY		CHK'D	
D		100% DRAWING		C		IFC UPDATE		B		IFC - FOR ENGINEER REVIEW ONLY	
A		85% DRAFT FOR CLIENT REVIEW		No.		DESCRIPTION		BY		CHK'D	
D		100% DRAWING		C		IFC UPDATE		B		IFC - FOR ENGINEER REVIEW ONLY	
A		85% DRAFT FOR CLIENT REVIEW		No.		DESCRIPTION		BY		CHK'D	
D		100% DRAWING		C		IFC UPDATE		B		IFC - FOR ENGINEER REVIEW ONLY	
A		85% DRAFT FOR CLIENT REVIEW		No.		DESCRIPTION		BY		CHK'D	
D		100% DRAWING		C		IFC UPDATE		B		IFC - FOR ENGINEER REVIEW ONLY	
A		85% DRAFT FOR CLIENT REVIEW		No.		DESCRIPTION		BY		CHK'D	
D		100% DRAWING		C		IFC UPDATE		B		IFC - FOR ENGINEER REVIEW ONLY	
A		85% DRAFT FOR CLIENT REVIEW		No.		DESCRIPTION		BY		CHK'D	
D		100% DRAWING		C		IFC UPDATE		B		IFC - FOR ENGINEER REVIEW ONLY	
A		85% DRAFT FOR CLIENT REVIEW		No.		DESCRIPTION		BY		CHK'D	
D		100% DRAWING		C		IFC UPDATE		B		IFC - FOR ENGINEER REVIEW ONLY	
A		85% DRAFT FOR CLIENT REVIEW		No.		DESCRIPTION		BY		CHK'D	
D		100% DRAWING		C		IFC UPDATE		B		IFC - FOR ENGINEER REVIEW ONLY	
A		85% DRAFT FOR CLIENT REVIEW		No.		DESCRIPTION		BY		CHK'D	
D		100% DRAWING		C		IFC UPDATE		B		IFC - FOR ENGINEER REVIEW ONLY	
A		85% DRAFT FOR CLIENT REVIEW		No.		DESCRIPTION		BY		CHK'D	
D		100% DRAWING		C		IFC UPDATE		B			



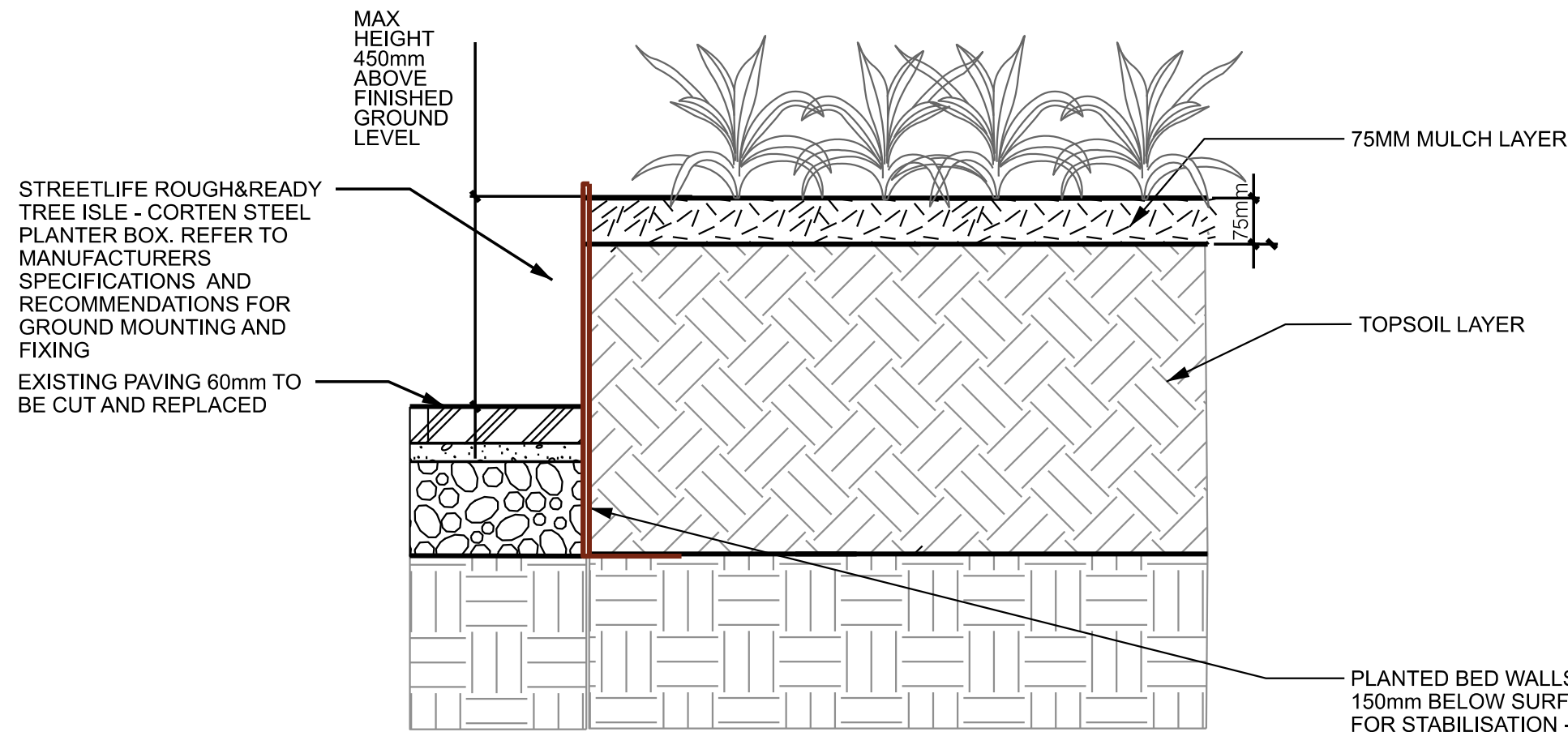
											HATCH DWG. No. H372565-0000-292-DR500					
											<div>HATCH</div>		<div>MIRRABOOKA TOWN SQUARE 16 SUDBURY ROAD, MIRRABOOKA WA</div>			
											<div>LANDSCAPE SECTIONS</div>					



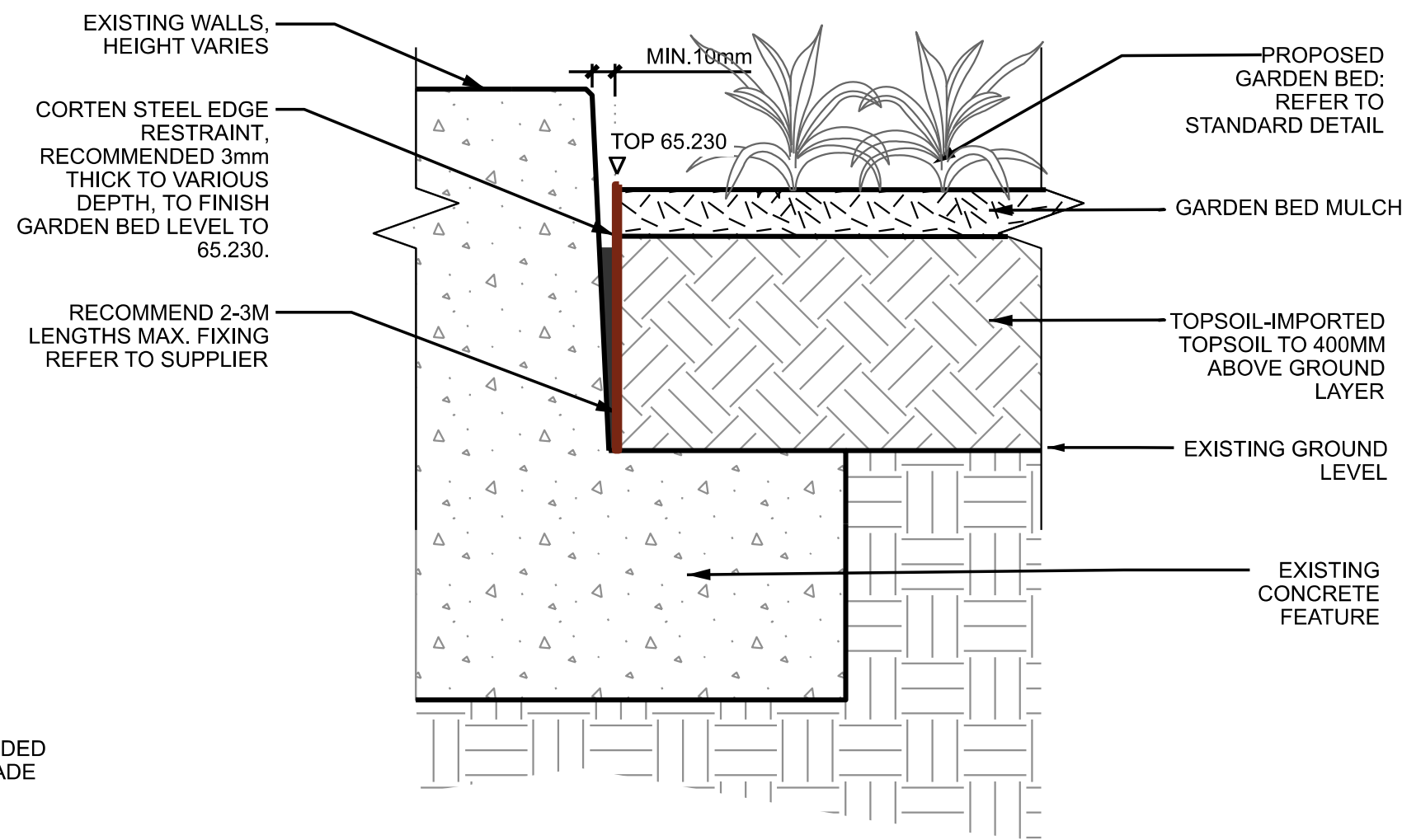
1 STABILIZED RED FINES - P2
TYPICAL DETAIL SECTION



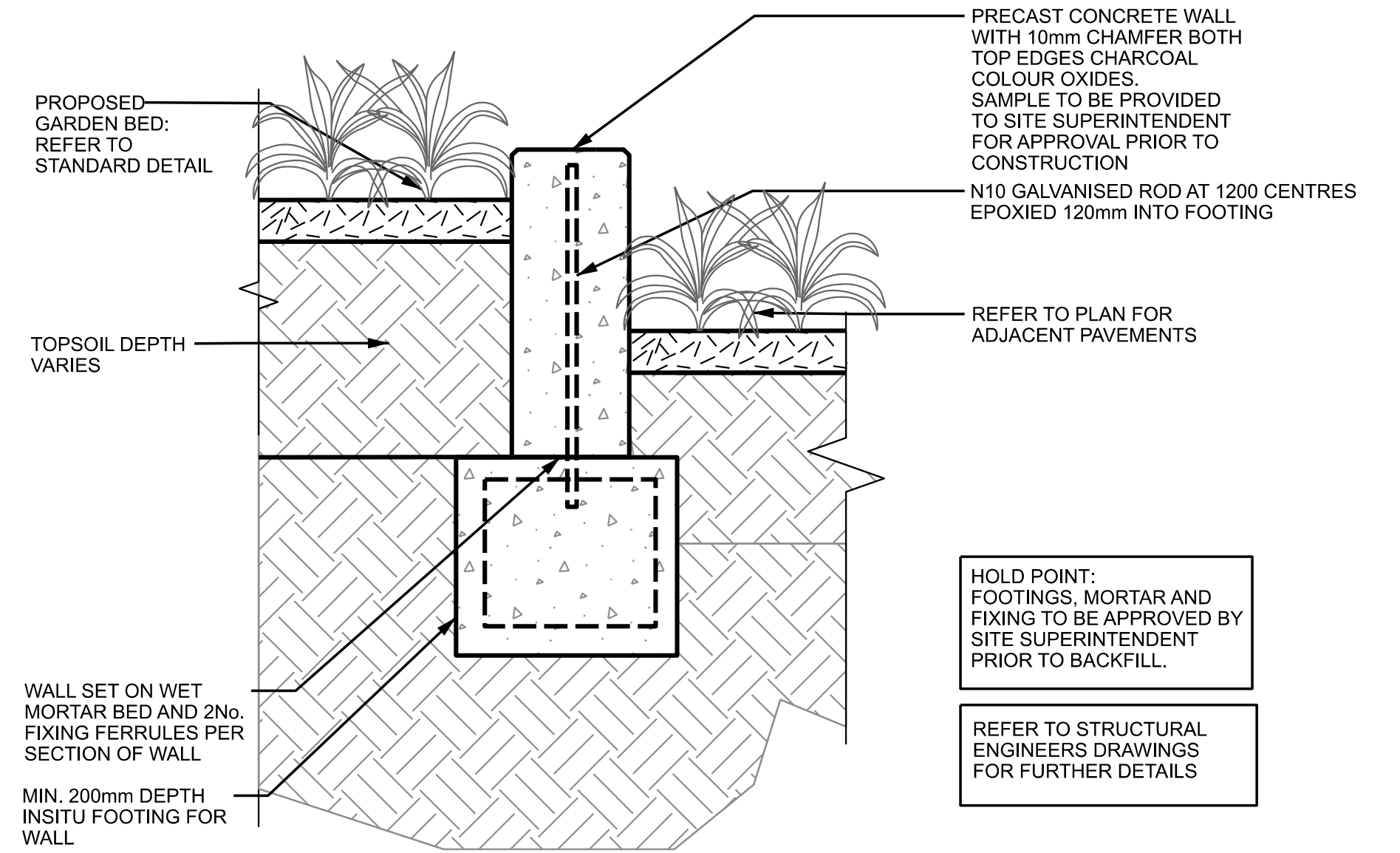
2 STEEL EDGE 150X6mm FLUSH -E1
TYPICAL DETAIL SECTION



4 STREETLIFE ROUGH&READY TREE ISLE PLANTER
TYPICAL DETAIL SECTION 1:10



5 CORTEN STEEL EDGE TO EXISTING CONCRETE FEATURE WALL -W2
TYPICAL DETAIL SECTION 1:10



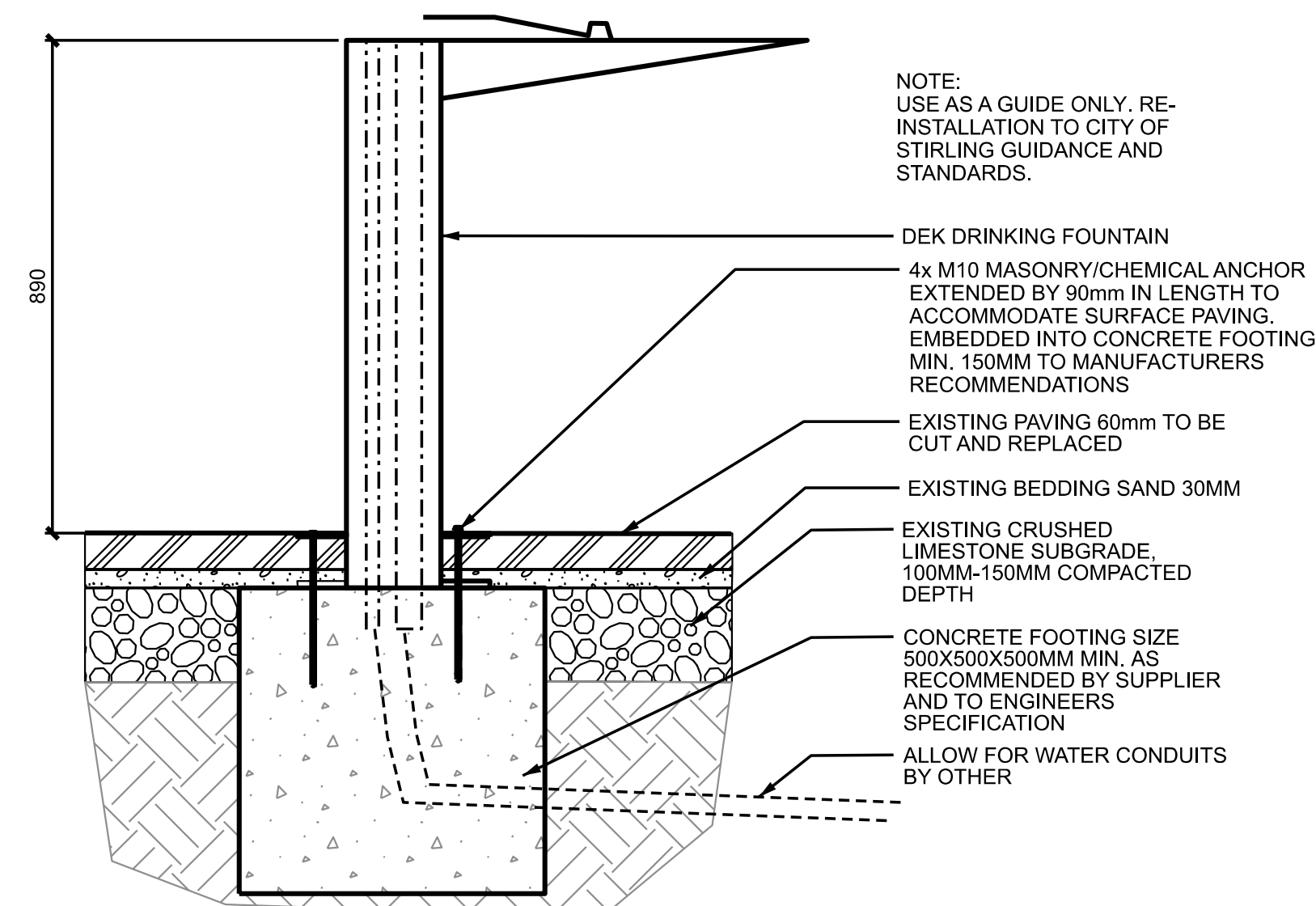
3 INSITU CONCRETE RETAINING WALL -W1

TYPICAL DETAIL SECTION

HATCH DWG. No.
H372565-0000-292-DR600

																																																																																																																																																																																																																																																																																																																																																																																																																																																																																																																																																																																																																																																																																																																																																																																																																																																																																																																																																																																																																																																																																																																																																																																																																																																																																																																																																																																																																					</
--	--	--	--	--	--	--	--	--	--	--	--	--	--	--	--	--	--	--	--	--	--	--	--	--	--	--	--	--	--	--	--	--	--	--	--	--	--	--	--	--	--	--	--	--	--	--	--	--	--	--	--	--	--	--	--	--	--	--	--	--	--	--	--	--	--	--	--	--	--	--	--	--	--	--	--	--	--	--	--	--	--	--	--	--	--	--	--	--	--	--	--	--	--	--	--	--	--	--	--	--	--	--	--	--	--	--	--	--	--	--	--	--	--	--	--	--	--	--	--	--	--	--	--	--	--	--	--	--	--	--	--	--	--	--	--	--	--	--	--	--	--	--	--	--	--	--	--	--	--	--	--	--	--	--	--	--	--	--	--	--	--	--	--	--	--	--	--	--	--	--	--	--	--	--	--	--	--	--	--	--	--	--	--	--	--	--	--	--	--	--	--	--	--	--	--	--	--	--	--	--	--	--	--	--	--	--	--	--	--	--	--	--	--	--	--	--	--	--	--	--	--	--	--	--	--	--	--	--	--	--	--	--	--	--	--	--	--	--	--	--	--	--	--	--	--	--	--	--	--	--	--	--	--	--	--	--	--	--	--	--	--	--	--	--	--	--	--	--	--	--	--	--	--	--	--	--	--	--	--	--	--	--	--	--	--	--	--	--	--	--	--	--	--	--	--	--	--	--	--	--	--	--	--	--	--	--	--	--	--	--	--	--	--	--	--	--	--	--	--	--	--	--	--	--	--	--	--	--	--	--	--	--	--	--	--	--	--	--	--	--	--	--	--	--	--	--	--	--	--	--	--	--	--	--	--	--	--	--	--	--	--	--	--	--	--	--	--	--	--	--	--	--	--	--	--	--	--	--	--	--	--	--	--	--	--	--	--	--	--	--	--	--	--	--	--	--	--	--	--	--	--	--	--	--	--	--	--	--	--	--	--	--	--	--	--	--	--	--	--	--	--	--	--	--	--	--	--	--	--	--	--	--	--	--	--	--	--	--	--	--	--	--	--	--	--	--	--	--	--	--	--	--	--	--	--	--	--	--	--	--	--	--	--	--	--	--	--	--	--	--	--	--	--	--	--	--	--	--	--	--	--	--	--	--	--	--	--	--	--	--	--	--	--	--	--	--	--	--	--	--	--	--	--	--	--	--	--	--	--	--	--	--	--	--	--	--	--	--	--	--	--	--	--	--	--	--	--	--	--	--	--	--	--	--	--	--	--	--	--	--	--	--	--	--	--	--	--	--	--	--	--	--	--	--	--	--	--	--	--	--	--	--	--	--	--	--	--	--	--	--	--	--	--	--	--	--	--	--	--	--	--	--	--	--	--	--	--	--	--	--	--	--	--	--	--	--	--	--	--	--	--	--	--	--	--	--	--	--	--	--	--	--	--	--	--	--	--	--	--	--	--	--	--	--	--	--	--	--	--	--	--	--	--	--	--	--	--	--	--	--	--	--	--	--	--	--	--	--	--	--	--	--	--	--	--	--	--	--	--	--	--	--	--	--	--	--	--	--	--	--	--	--	--	--	--	--	--	--	--	--	--	--	--	--	--	--	--	--	--	--	--	--	--	--	--	--	--	--	--	--	--	--	--	--	--	--	--	--	--	--	--	--	--	--	--	--	--	--	--	--	--	--	--	--	--	--	--	--	--	--	--	--	--	--	--	--	--	--	--	--	--	--	--	--	--	--	--	--	--	--	--	--	--	--	--	--	--	--	--	--	--	--	--	--	--	--	--	--	--	--	--	--	--	--	--	--	--	--	--	--	--	--	--	--	--	--	--	--	--	--	--	--	--	--	--	--	--	--	--	--	--	--	--	--	--	--	--	--	--	--	--	--	--	--	--	--	--	--	--	--	--	--	--	--	--	--	--	--	--	--	--	--	--	--	--	--	--	--	--	--	--	--	--	--	--	--	--	--	--	--	--	--	--	--	--	--	--	--	--	--	--	--	--	--	--	--	--	--	--	--	--	--	--	--	--	--	--	--	--	--	--	--	--	--	--	--	--	--	--	--	--	--	--	--	--	--	--	--	--	--	--	--	--	--	--	--	--	--	--	--	--	--	--	--	--	--	--	--	--	--	--	--	--	--	--	--	--	--	--	--	--	--	--	--	--	--	--	--	--	--	--	--	--	--	--	--	--	--	--	--	--	--	--	--	--	--	--	--	--	--	--	--	--	--	--	--	--	--	--	--	--	--	--	--	--	--	--	--	--	--	--	--	--	--	--	--	--	--	--	--	--	--	--	--	--	--	--	--	--	--	--	--	--	--	--	--	--	--	--	--	--	--	--	--	--	--	--	--	--	--	--	--	--	--	--	--	--	--	--	--	--	--	--	--	--	--	--	--	--	--	--	--	--	--	--	--	--	--	--	--	--	--	--	--	--	--	--	--	--	--	--	--	--	--	--	--	--	--	--	--	--	--	--	--	--	--	--	--	--	--	--	--	--	--	--	--	--	--	--	--	--	--	--	--	--	--	--	--	--	--	--	--	--	--	--	--	--	--	--	--	--	--	--	--	--	--	--	--	--	--	--	--	--	--	--	--	--	--	--	--	--	--	--	--	--	--	--	--	--	--	--	--	--	--	--	--	--	--	--	--	--	--	--	--	--	--	--	--	--	--	--	--	--	--	--	--	--	--	--	--	--	--	--	--	--	--	--	--	--	--	--	--	--	--	--	--	--	--	--	--	--	--	--	--	--	--	--	--	--	--	--	--	--	--	--	--	--	--	--	--	--	--	--	--	--	--	--	--	--	--	--	--	--	--	--	--	--	--	--	--	--	--	--	--	--	--	--	--	--	--	--	--	--	--	--	--	--	--	--	--	--	--	--	--	--	--	--	--	--	--	--	--	--	--	--	--	--	--	--	--	--	--	--	--	--	--	--	--	--	--	--	--	--	--	--	--	--	--	--	--	--	--	--	--	--	--	--	--	--	--	--	--	--	--	--	--	--	--	--	--	--	--	--	--	--	--	--	--	--	--	--	--	--	--	--	--	--	--	--	--	--	--	--	--	--	--	--	--	--	--	--	--	--	--	--	--	--	--	--	--	--	--	--	--	--	--	--	--	--	--	--	--	--	--	----

H372565-0000-292-DR601



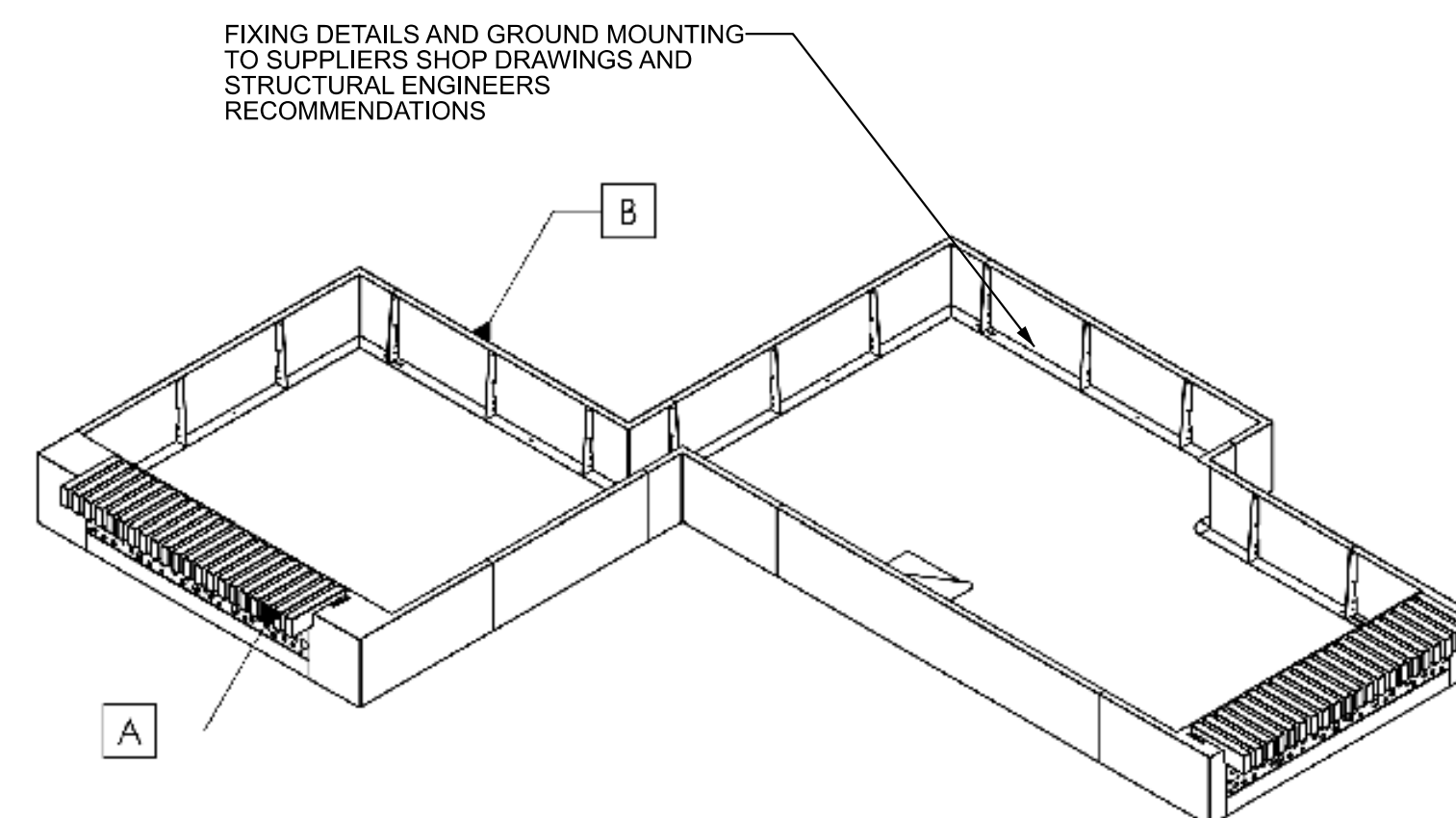
1 STONE BLOCKS -S1
TYPICAL DETAIL

1:10

2 DRAFFIN BIKE RACKS -BR
TYPICAL DETAIL

1:10

3 DEK DRINKING FOUNTAIN - D
TYPICAL DETAIL 1:10

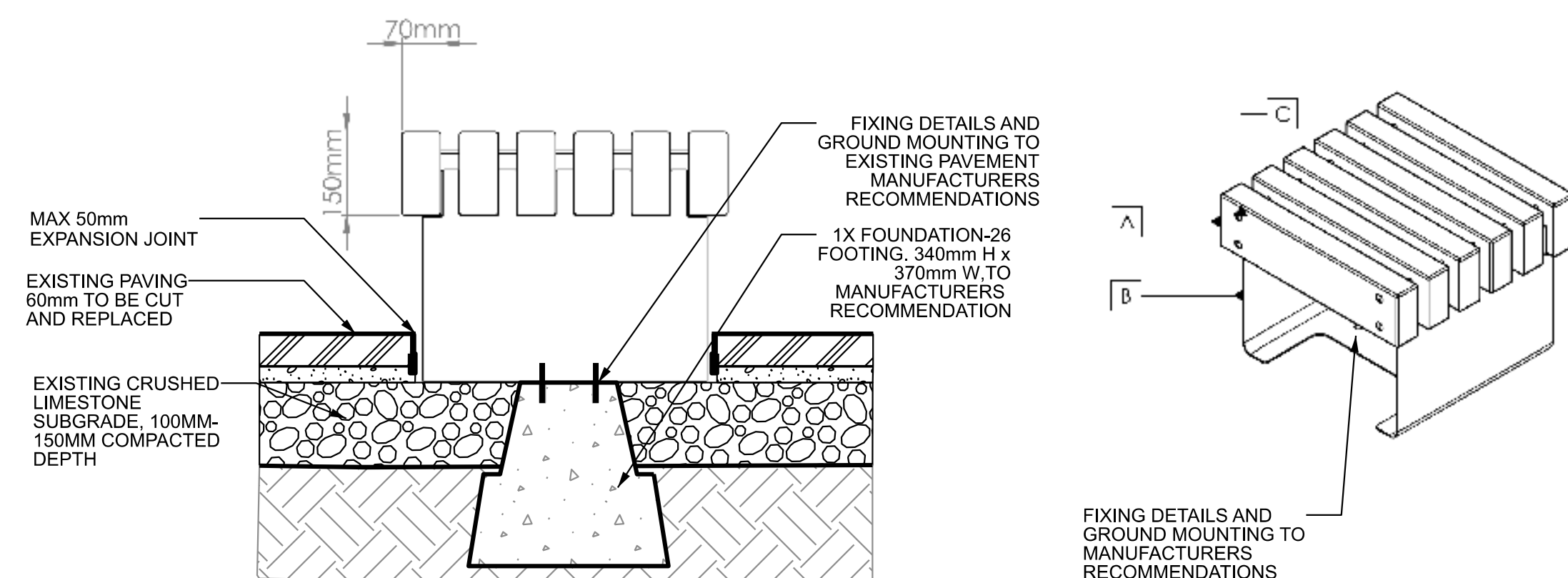
1.10

4 ROCK BOULDERS -RB
TYPICAL DETAIL

1:10

5 INTEGRATED ROUGH&READY TREE ISLES WITH INTEGRATED BENCH SEATING
SUPPLIER ISOMETRIC VIEW N.T.S.

NTS



6 ROUGH&READY LINEAR TOP SEAT WITH ARM AND BACK REST
TYPICAL PLAN 1:10

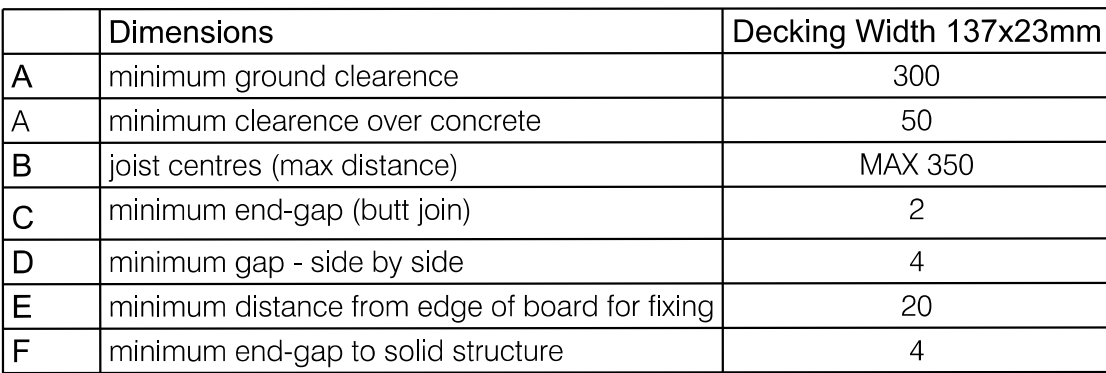
1.1

7 ROUGH&READY CUBES
TYPICAL DETAIL

1:10

HATCH DWG. No.
H372565-0000-292-DR601

[illegible]



1:20



NTS



1:20

1:50

NTS

SHEET SIZE: A1