

# Mettams Pool and Watermans Bay Coastal Adaptation Options Assessment

## Stakeholder Engagement and Communications Outcomes Report



Exploring New Boundaries

[361degrees.com.au](http://361degrees.com.au)



## Contact

Claire Paddison  
Director  
claire.paddison@361degrees.com.au  
0437 205 218

## Company details



361 Degrees Strategic Engagement and Communications  
ABN: 19 122 181 417  
PO Box 61, Inglewood, WA, 6932  
www.361degrees.com.au

## Date

25 February 2025

## Version

FINAL

## Disclaimer

*361 Degrees Strategic Engagement and Communications has been commissioned by and prepared this report for the exclusive use of M P Rogers & Associates (the Client). 361 Degrees Strategic Engagement and Communications exercises all reasonable skill and care in the provision of its professional services in a manner consistent with the level of care and expertise exercised by members of the engagement profession.*

*361 Degrees Strategic Engagement and Communications is not responsible and will not be liable to any other person or organisation for or in relation to any information, facts and/or opinions contained within this Report, or for any loss or damage suffered by any other person or organisation arising from information contained therein (including without limitation matters arising from any negligent act or omission 361 Degrees Strategic Engagement and Communications or for any loss or damage suffered by any other party relying upon the information expressed in this Report).*

*Other parties should not rely upon the report or the accuracy or completeness of any information in this report and should make their own inquiries and obtain independent advice in relation to such matters.*

# Contents

<b>1</b>	<b>INTRODUCTION .....</b>	<b>4</b>
1.1	Background .....	4
1.1.1	Previous Consultation .....	5
1.2	Engagement Approach .....	6
1.3	Engagement Outcomes .....	6
<b>2</b>	<b>ENGAGEMENT METHODOLOGY .....</b>	<b>7</b>
2.1	Face-to-Face Engagement .....	7
2.1.1	Mettams and Watermans Reference Group .....	7
2.1.2	Coastal Conversations .....	9
2.1.3	Other Key Stakeholder Meetings .....	10
2.2	Communications .....	11
<b>3</b>	<b>ENGAGEMENT OUTCOMES .....</b>	<b>12</b>
3.1	Mettams and Watermans Reference Group .....	12
3.1.1	Workshop 1 – 16 April 2024 .....	12
3.1.2	Workshop 2 – 18 June 2024 .....	12
3.1.3	Workshop 3 – 24 October 2024 .....	14
3.1.4	Workshop 4 – 11 December 2024 .....	14
3.2	Coastal Conversations .....	15
3.2.1	Tuesday, 10 September – Watermans Bay .....	15
3.2.2	Thursday, 26 September – Trigg .....	15
3.3	Other Key Stakeholder Meetings .....	15
<b>4</b>	<b>CONCLUSION .....</b>	<b>16</b>
4.1	Next Steps .....	16
<b>5</b>	<b>APPENDICES .....</b>	<b>17</b>
A.	Frequently Asked Questions	
B.	Coastal Conversations Advertisements	
C.	Multi-Criteria Analysis Mettams Pool	
D.	Multi-Criteria Analysis Watermans Bay	
E.	Mettams and Watermans Reference Group Terms of Reference	
F.	Mettams and Watermans Reference Group Workshop Minutes	

# 1 Introduction

361 Degrees was engaged by coastal engineering consultants M P Rogers & Associates (M P Rogers) to support the City of Stirling (the City) in developing and implementing a Community and Stakeholder Engagement Plan (the Plan), to inform the development and assessment of concept adaptation options for Mettams Pool and Watermans Bay (the Project) between December 2023 and March 2025.

This Stakeholder Engagement and Communications Outcomes Report provides an overview of the following:

- Background – why and how the City embarked on this assessment, including prior community engagement and the evolution of the Coastal Hazard Risk Management and Adaptation Planning (CHRMAP) process.
- Engagement Approach – an overview of the methodology employed to capture viewpoints from key stakeholders and the community to inform the Project.
- Engagement Findings – insights gathered throughout from stakeholders.
- Next Steps – a roadmap for outlining the next steps in the Project following completion of the engagement process.

## 1.1 Background

The City of Stirling, with a population of 234,000 (2021 Census data), spans a diverse natural and physical landscape of approximately 104 km<sup>2</sup> including 7 km of coastline. Its foreshore features sandy beaches, rock pools, open spaces, parks, reserves, shopping precincts, recreation and leisure centres, scenic drives and waterfront properties, attracting local residents, neighbouring communities in Perth's northwestern suburbs and international tourists.

In 2019, Mettams Pool and Watermans Bay were identified as two of 55 coastal erosion hotspots in the *Assessment of Coastal Erosion Hotspots in Western Australia*, prepared by the Department of Planning, Lands and Heritage (DPLH) and the Department of Transport (DoT). This assessment highlighted significant risks to public foreshore amenities which were deemed prone to erosion hazards in the near to medium term (0–25 years). Public infrastructure assets, including dual-use paths, sections of West Coast Drive and utility services (gas, power and water) were assessed as being at high risk of damage from coastal erosion in the medium to long term (as early as 2045).

Recognising these risks, the City identified the need to develop a comprehensive CHRMAP for the study area. This effort aligns with the *CHRMAP Guidelines and State Planning Policy No. 2.6: State Coastal Planning Policy (Western Australian Planning Commission [WAPC], 2013a)* which the City adopted to guide future decision-making for vulnerable coastal assets.

Building on the CHRMAP process, the City initiated a Concept Adaptation Options Assessment for Mettams Pool and Watermans Bay (the Project), using a multi-criteria analysis (MCA) to identify and recommend concept options for coastal adaptation at both locations. Given shared challenges and synergies, the City opted to consolidate both sites into a single project, providing tailored recommendations where needed. Separate Concept Options Assessment Reports have been developed for each site.

Funding for the Project was secured through a Coastal Management Plan Assistance Program Grant from the DPLH. In collaboration with the DPLH and DoT, the City established a Project Working Team (PWT) to oversee the process, ensuring alignment with stakeholder expectations and project objectives.

### 1.1.1 Previous Consultation

Prior to the Project commencing, the City had previously undertaken extensive engagement and the outcomes were a central consideration in informing the development of the stakeholder engagement and communications approach for the Project. They also ensured that community values and priorities were integrated into project decision-making. A summary of previous engagement outcomes is outlined below.

In 2019, the City sought community feedback on values associated with coastal assets and infrastructure at Mettams Pool. Public consultation through a community workshop and online engagement (generating 491 online survey responses), revealed several key themes:

- Keeping the **natural amenity of Mettams Pool** was paramount. There was a strong theme of beach goers enjoying the secluded and undeveloped nature of the beach and surrounds.
- Support to **improve the access to a sandy beach and the water**. This did not simply relate to disability access but more broadly to all users. In part this referred to requests to seek options to remove rock hazards.
- Equally, there was support for an enhanced grass space, supported primarily as a laydown area for rigging windsurfers. BBQs and additional seating were also connected to an **enhanced passive recreation space**.
- Many visitors requested an **upgrade to the ablution and changing facilities** and **improving shelter and shade**.
- In general, feedback didn't support any additional parking immediately around Mettams Pool. A **safe pedestrian and cycling environment** was frequently mentioned, ensuring there was clear separation from traffic.

Subsequent consultations in 2021 and 2022 to inform the CHRMAP reinforced these values and highlighted:

- Preserving the **function and opportunity for recreation activities** along the coastline (such as walking/running, swimming and surfing).
- Preserving the **existing hospitality venues** along the coastline and access to them.
- Ensuring the **natural environment is protected and sustained** in its current condition or an improved condition (concerning the dunes and flora and fauna).
- **Developing solutions to coastal processes that are** sustainable (financially, socially and built form) and locally responsive.
- **Regularly revisiting values** with the community and key stakeholders in relation to developing adjacent coastlines.
- Maintaining the **services that maximise community benefit** for all.
- Ensuring a **safe and accessible coastline** for all.
- Achieving a **balance between access needs and environmental sensitivities**.

Following the collection of these values the next stage of the CHRMAP, engagement focused on understanding the community's preferences for managing the coastline and impacted assets. The results showed that:

- Coastal zones with more built assets of economic value and environmental assets were deemed to have a 'catastrophic' consequence if they were to be impacted by coastal hazards. Examples of built assets included West Coast Highway, the Scarborough foreshore and infrastructure services running along West Coast Drive. Examples of environmental assets included the dune system, vegetation, the reef and usable sandy beach. For these assets, protect or accommodate were the preferred adaptation strategies.
- For some social assets (such as surf life-saving clubs) it was noted that a planned or managed retreat would be an appropriate adaptation strategy.
- Where possible, limited development should be allowed on the foreshore reserve along the whole coastline.



## 1.2 Engagement Approach

The Community and Stakeholder Engagement Plan (the Plan) was designed to align with the City of Stirling's *Community and Stakeholder Engagement Policy*, and designed to support the City in meeting the following communication and engagement objectives:

- To consider the previous consultation, (whilst minimising consultation fatigue) which highlighted the diverse range of stakeholder and community values, priorities and expertise / local knowledge, in informing the development of recommendations and a concept design to manage the impact of current and future coastal hazard risks at Mettams Pool and Watermans Bay.
- To promote a shared understanding and dialogue around issues and opportunities relating to current and future coastal hazard risks; community and cultural values; stakeholder priorities and key coastal infrastructure and assets at risk.
- To promote a high level of stakeholder understanding in the final recommendations and concepts and the pathway on how the City will address the risks over time.

To achieve both project and engagement objectives and align with the City's *Community and Stakeholder Engagement Policy*, a methodology combined both digital communications and face-to-face engagement to target specific key stakeholder groups.

The strategy focused on providing opportunities to engage key stakeholders between Inform and Consult on the International Association of Public Participation (IAP2) Spectrum, as illustrated in the figure below.

Image 1: IAP2 Public Participation Spectrum

INCREASING IMPACT ON THE DECISION					
	INFORM	CONSULT	INVOLVE	COLLABORATE	EMPOWER
PUBLIC PARTICIPATION GOAL	To provide the public with balanced and objective information to assist them in understanding the problem, alternatives, opportunities and/or solutions.	To obtain public feedback on analysis, alternatives and/or decisions.	To work directly with the public throughout the process to ensure that public concerns and aspirations are consistently understood and considered.	To partner with the public in each aspect of the decision including the development of alternatives and the identification of the preferred solution.	To place final decision making in the hands of the public.
PROMISE TO THE PUBLIC	We will keep you informed.	We will keep you informed, listen to and acknowledge concerns and aspirations, and provide feedback on how public input influenced the decision.	We will work with you to ensure that your concerns and aspirations are directly reflected in the alternatives developed and provide feedback on how public input influenced the decision.	We will look to you for advice and innovation in formulating solutions and incorporate your advice and recommendations into the decisions to the maximum extent possible.	We will implement what you decide.

## 1.3 Engagement Outcomes

This report summarises key findings from the community engagement process, including:

- Feedback sought through the formal engagement of stakeholders through the Mettams and Watermans Reference Group.
- Local community values collected through Coastal Conversations.
- Additional feedback provided to the PWT from the community through additional channels, including letters, emails, conversations and the City's website feedback function.

Building on earlier consultations, these findings informed the MCA assessment tool developed by M P Rogers & Associates. The MCA subsequently guided the evaluation of coastal management options and shaped the final concept plans for Mettams Pool and Watermans Bay, to be presented to the Council for endorsement in early 2025.

## 2 Engagement Methodology

Recognising the City had previously gathered extensive input from the local community and other key stakeholder groups regarding coastal assets at risk, the engagement methodology aimed to achieve the following objectives:

- Validate previously identified community values for Mettams Pool and Watermans Bay. Sharing a wide range of perspectives and opinions.
- Address stakeholder concerns, acknowledging existing knowledge and managing consultation fatigue.
- Position the PWT and the City as proactive and responsive to evolving community needs.
- Apply the MCA assessment tool to select the most suitable coastal adaptation option for Mettams Pool and Watermans Bay for recommendation to the City and Council.

The Project designed an approach that facilitated both face-to-face and online engagement aligning with the City of Stirling's *Community and Stakeholder Engagement Policy* and best practices in coastal management planning. The Project's engagement approach also took into consideration other consultation being undertaken by the City concurrently, including engagement with the City's Coastal Advisory Group (the Group). With any relevant project information shared with the Group and likewise any feedback from the Group relevant to the Project, shared with the PWT.

### 2.1 Face-to-Face Engagement

#### 2.1.1 Mettams and Watermans Reference Group

A Stakeholder Reference Group (the Reference Group) was established specifically for the Project comprising government agencies, technical experts and representatives from key community groups with a high level of interest in the Project and with Groups whom had been regularly engaged by the City regarding coastal hazard risks.

Operating under the guidance of the PWT, the Reference Group's remit was to undertake a Concept Adaptation Options Assessment for Mettams Pool and Watermans Bay through an MCA process.

While the Reference Group did not have formal decision-making authority, it served as a platform for meaningful dialogue, consensus-building and transparency in shaping recommendations for both Mettams Pool and Watermans Bay. Building on the City's CHRMAP process and drawing on previous engagement to validate and refine adaptation options, the Reference Group convened across four workshops to explore key concepts and issues, including:

- Reviewing data from the CHRMAP and validating community values from previous consultations.
- Providing input into the evaluation performance criteria and weightings for the MCA.
- Providing feedback on conceptual coastal adaptation options for Mettams Pool and Watermans Bay.
- Minimising consultation fatigue by building on existing knowledge and fostering trust through transparent communications.

*(Please refer to Appendices for Minutes and Workshop Presentations for additional details.)*

The first two workshops were focused on ensuring that all key project partners were aligned on the Project's background, the MCA and benefit distribution analysis (BDA), and confirming the stakeholder engagement program, with representatives from the following organisations participating:

- City of Stirling Officers
- Ward Councillors
- Department of Planning, Lands and Heritage
- Department of Transport
- Department of Biodiversity, Conservation and Attractions
- M P Rogers & Associates (Principal Coastal Engineer)
- 361 Degrees (Facilitator, Communications and Engagement Consultants)
- Aither (Benefits Distribution Analysis Consultant)

A guest from the University of Western Australia's Oceans Institute attended the second workshop only to provide an overview of two projects being undertaken by the UWA Centre for Environmental Economics & Policy:

- Project 1: Coastal Values Community Survey
- Project 2: Coastal Benefit-Cost Analysis Tool

For Workshops 3 and 4, the reference group was joined by representatives from key community groups, who were thoroughly briefed by the Project Team prior to their participation. One representative participated from each of the following groups:

- Surfing WA
- Stirling Natural Environment Coast Care
- Coast Whispers Facebook Group
- Mettams Pool Swimming Group
- Watermans Bay Swimming Group

The involvement of the community representatives was intended to incorporate authentic perspectives from a cohort of community groups that frequent Mettams Pool and/or Watermans Bay, ensuring that the unique needs, concerns and priorities of each group were reflected in discussions. Their participation was aimed at broadening reach and inclusivity, enabling the project to connect with community members passionate about the City's coastline.

In addition, this approach was designed to facilitate enhanced communication and transparency, with representatives acting as two-way conduits for timely updates, clarifications and feedback. Finally, it was anticipated that their active involvement would generate a sense of shared ownership and responsibility among participants, inspiring them to champion outcomes and promote ongoing collaboration within the broader community.

Terms of Reference were established by the City of Stirling and agreed upon by the Reference Group. (*Please refer to Appendices for Terms of Reference*)



## 2.1.2 Coastal Conversations

The City hosted two Coastal Conversations in September 2024 for the PWT to share more project information, while gathering input to inform the creation of an initial concept plan:

- Tuesday 10 September 2024, from 9am to 10am, at Watermans Bay.
- Thursday 26 September 2024, from 9am to 10am, at Canteen Trigg.

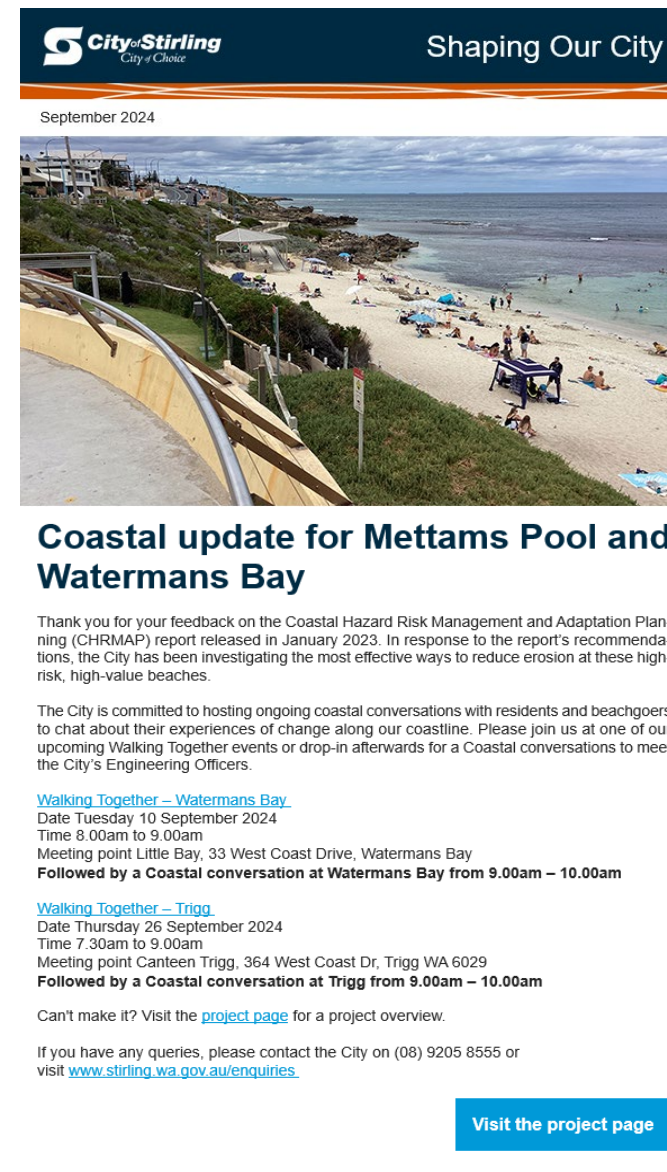
Selected due to their inclusivity and accessibility, the purpose of the Coastal Conversations was to provide community members with an opportunity to:

- Learn more about proposed coastal adaptation options for Mettams Pool and Watermans Bay.
- Discuss questions and concerns directly with members of the PWT.
- Understand the extensive and complex process of selecting preferred coastal adaptation options for Mettams Pool and Watermans Bay.
- Understand the role of community representatives in the adaptation planning process.
- Clarify how community feedback can be shared with the City.

These sessions were promoted via the following channels:

- the City's digital channels:
  - website
    - project web page
    - event page (789 views)
- 111 direct email invitation to stakeholder database
- Coast Whispers Facebook page (~29 k followers) 375 print advertisements / flyers delivered to the local area
- word of mouth via Mettams and Watermans Reference Group.

Image 2: Email advertising Coastal Conversations



### 2.1.3 Other Key Stakeholder Meetings

#### Meeting with the Coastal Advisory Group

The City hosted a meeting with the Coastal Advisory Group on Thursday 28 November 2024.

This meeting was scheduled at the request of the Group to obtain an update regarding multiple coastal projects along the City's coastline. The Project's Principal Coastal Engineer from M P Rogers attended to present and answer questions regarding the Project.

Like the Coastal Conversations, the purpose of the meeting was to provide the Group with an opportunity to:

- Learn more about proposed coastal adaptation options for Mettams Pool and Watermans Bay.
- Discuss questions and concerns directly with members of the Project Team.
- Understand the extensive and complex process of selecting preferred coastal adaptation options for Mettams Pool and Watermans Bay.
- Understand the role of community representatives in the adaptation planning process.
- Clarify how the Group's feedback can be shared with the City.

Image 3: Example of an email update about the City's current coastal projects



#### Current coastal projects

The City of Stirling has several coastal projects underway, with summaries and links available below.

- [Pedestrian Safety on West Coast Drive.](#)
- [Coastal Adaptation and Options Assessment \(Watermans Bay and Mettams Pool\).](#)
- [Scarborough Entertainment Precinct Reg 19 Noise Approvals.](#)
- **CCTV Projects** – Implement multiple CCTV initiatives to deter anti-social behaviour and enhance community safety.
- **Crowded Places Assessment** – Conduct a crowded place assessment for the Scarborough Beach precinct and provide recommendations to address any security gaps.
- **Parking Wayfinding Technology** – Identify parking wayfinding technology and install signage at City locations to improve availability of parking.
- **Investment Attraction** – Develop an Investment Attraction Framework to guide future investment opportunities to highlight the competitive advantages of investing in the City of Stirling.
- **Christmas Lights** – Install Christmas lights at key precincts, parks and reserves to add vibrancy, attract visitors and boost the local economy.
- **Coastal Boardwalk Feasibility Study** – Explore the feasibility of establishing a coastal boardwalk between Trigg and Scarborough Beach, involving community engagement.
- **Scarborough Precinct Planning & Management Framework** – Review current planning framework, implement new precinct management approach and progress key projects to meet community expectations and attract investment opportunities.

## 2.2 Communications

Managing stakeholder expectations about their role and level of influence in the Project and more generally providing information regarding the Project process was a key component in developing project communications and achieving the following objectives:

- Providing consistent information across all communications channels.
- Recognising existing community sentiment regarding coastal adaptation along the City's coastline.
- Ensuring resource materials facilitated focused and clear understanding about the project and facilitated meaningful discussions.
- Catering to a range of technical knowledge and understanding, breaking down specialised information into concise, jargon-free language.

In collaboration with the City, communications material was developed and implemented to support the engagement opportunities and management of media, social media and issues management. Key messaging and FAQs were developed to provide up-to-date project information and address misinformation and stakeholder concerns.

*(Please refer to Appendices for link to FAQs.)*

The engagement approach benefitted from the City's *Shaping our City* online project and engagement hub, an already established communications hub managed by the City:

<https://www.stirling.wa.gov.au/city-and-council/shaping-our-city/search-all-projects/coastal-environment-and-management>. Serving as a central source of information throughout the project, this hub housed:

- key project documents
- regular project updates
- upcoming details of engagement opportunities
- the City's contact details and feedback channels.

Image 4: Useful documents section on the City's Project web page

### Useful documents

- 
- Coastal Hazard Risk Management and Adaptation Planning (Endorsed August 2023)
  - CHRMAP Workshop Summary (February 2022)
  - Infographic - Coastal Values Survey Results (2021)
  - Mettams Pool Defensive Works – Concept Design Report (MRA, 2019)
  - Mettams Pool - Concept Plans Presented at Community Forum (July 2019)
  - Mettams Pool Preferred Option 2 (July 2019)
  - Community Values Survey and Community Forum Outcomes (July 2019)
  - Mettams Pool - Community Values Survey - Outcomes Report Summary (July 2019)
  - Geophysical Investigations (GBGMAPS, 2018)
  - Strategic Coastal Process Study (February 2016)
  - Mettams & Watermans Reference Group Coastal Adaptation Options - Workshop 1
  - Mettams & Watermans Reference Group Coastal Adaptation Options - Workshop 2
  - Mettams & Watermans Reference Group Coastal Adaptation Options - Workshop 3
  - Mettams & Watermans Reference Group Coastal Adaptation Options - Workshop 4

# 3 Engagement Outcomes

## 3.1 Mettams and Watermans Reference Group

### 3.1.1 Workshop 1 – 16 April 2024

#### Objectives:

- Confirm group governance (Terms of Reference, roles and responsibilities).
- Provide background on the project context, existing data, community values and previous CHRMAP assessments.
- Review the initial set of adaptation options identified in the CHRMAP (sand nourishment, groynes/headland enhancement, nearshore reefs/breakwaters, revetments/seawalls) and the broad advantages and disadvantages for each
- Discuss the role and process of the MCA and BDA.
- Confirm stakeholder engagement program.

#### Actions and outcomes:

- Endorsement of the Stakeholder Reference Group (SRG) Terms of Reference.
- Agreement to invite local community groups to future workshops.
- Update the City's website and FAQs to keep the public informed about progress.
- Complete a knowledge gap analysis and additional coastal process updates prior to Workshop 2.

### 3.1.2 Workshop 2 – 18 June 2024

#### Objectives:

- Review outcomes from Workshop 1 and any relevant new data on coastal processes.
- Confirm the approach to recruiting community representatives for Workshops 3 and 4.
- Outline MCA performance criteria and propose weighting categories (technical, social, environmental and economic).
- Highlight progress on the BDA methodology and discuss data collection needs.

Following on from Workshop 1, the group revisited key findings on sediment movement, shoreline monitoring and historical data, reaffirming the four adaptation options (beach nourishment, groynes/headland enhancement, nearshore reefs/breakwaters, revetments/seawalls) as suitable for further analysis.

Consistent with the aim of achieving an inclusive decision-making process, the group agreed to categorise the MCA's performance criteria into four main areas (technical, social, environmental and economic). Participants discussed how sub-criteria and weightings would be refined in anticipation of Workshop 3.

A guest from the University of Western Australia's Oceans Institute attended this workshop to provide an overview of two projects being undertaken by the UWA Centre for Environmental Economics & Policy:

- Project 1: Coastal Values Community Survey
- Project 2: Coastal Benefit-Cost Analysis Tool



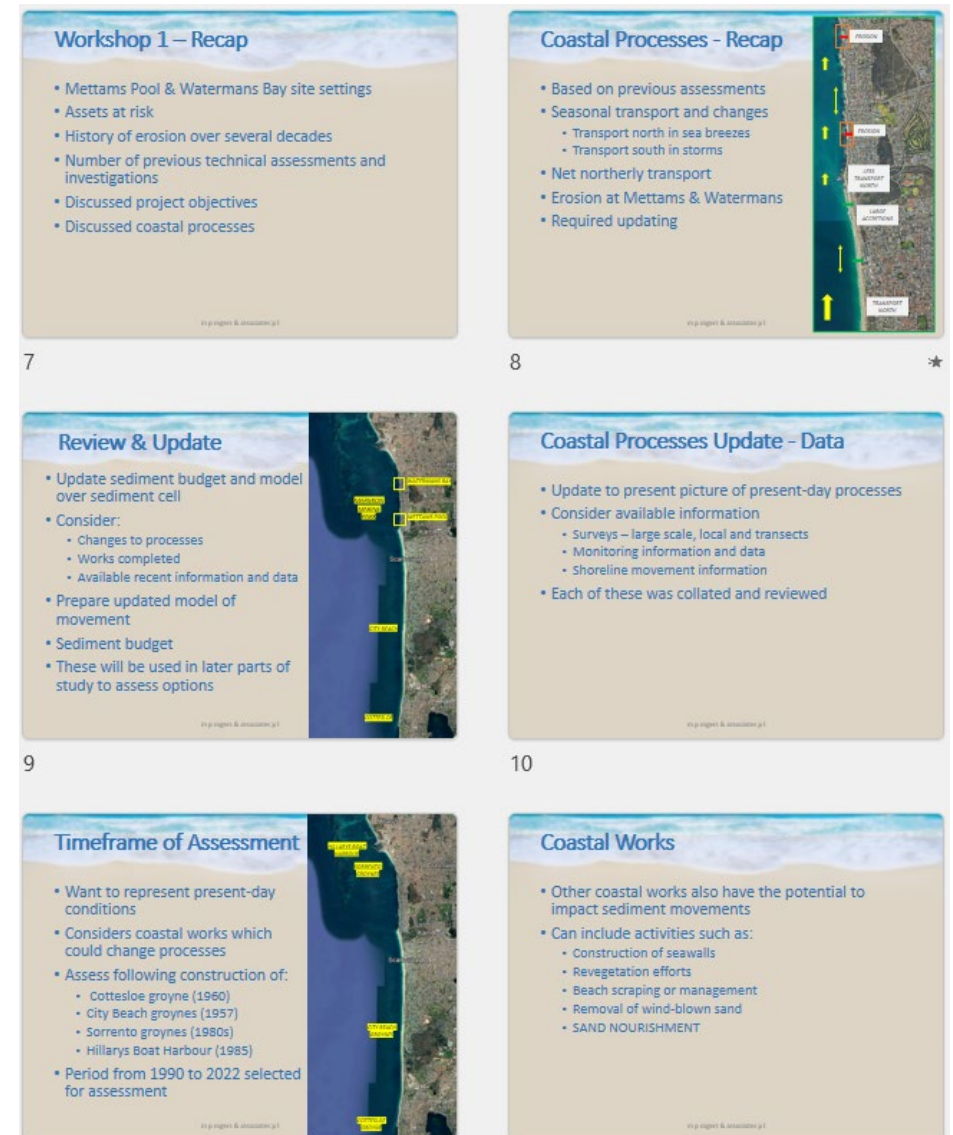
## Community engagement:

- As part of a broader engagement program the City proposed coordinating a couple of “Coastal Conversations” during September 2024, allowing the broader community to specifically learn more about the project and provide input on the proposed adaptation options.
- Meetings between the City and local community groups (e.g., with the Mettams gazebo users and the Coastal Advisory Group) were also used to further raise awareness and encourage participation in the Coastal Conversations.

## Actions and outcomes:

- The City to manage invitations to local community groups to nominate representatives for Workshops 3 and 4.
- M P Rogers to prepare a technical note clarifying project objectives and MCA weightings.
- Aither to continue developing the BDA approach and gather additional user data.

Image 5: Excerpt from presentation for Reference Group workshops



### 3.1.3 Workshop 3 – 24 October 2024

#### Objectives:

- Recap of Workshops 1 and 2, highlighting any progress in data collection.
- Summary of stakeholder engagement since Workshop 2, highlighting the onboarding of community representatives for the Reference Group.
- Further discussion of the BDA, focusing on the need for accurate data on daily and seasonal beach usage.
- Presentation of updated coastal process findings.
- Initial introduction of conceptual adaptation options for Mettams Pool and Watermans Bay, detailing pros, cons, costs and conceptual designs.
- Proposed MCA framework and draft weightings for review.

This session emphasised the significance of understanding visitor profiles to ensure the BDA accurately reflects the distribution of costs and benefits. The group examined each conceptual adaptation option's potential footprint, anticipated lifespan (up to 2070), construction implications and environmental impacts.

Consistent with the broader project goals, the group agreed to test multiple MCA weighting scenarios, ranging from equal weighting across the four main categories to variations placing additional emphasis on either environmental or social considerations.

#### Actions and outcomes:

- M P Rogers to complete the Project's MCA under different weighting scenarios for both Mettams Pool and Watermans Bay.
- Community representatives encouraged to share workshop outcomes with their respective groups and solicit feedback.
- Workshop 4 scheduled for December to review MCA results and identify a recommended adaptation pathway.

### 3.1.4 Workshop 4 – 11 December 2024

#### Objectives:

- Presentation of MCA results for each adaptation option, including how varied weightings influenced outcomes.
- Identification of preferred coastal adaptation options for Mettams Pool and Watermans Bay.
- Discussion of next steps, including reporting, Council presentations and future community engagement.

During this meeting, the group reviewed MCA results under multiple weighting scenarios, noting that sand nourishment consistently emerged as the preferred medium-term approach (up to 2070) for both locations.

#### Reporting and governance:

- The final outcomes of the reference group's deliberations will be compiled into a report for the City of Stirling Council in Q1 2025.
- The BDA being conducted by Aither continues alongside the recommended options to ensure alignment with user needs and potential cost/benefit scenarios.
- Future work may involve detailed design, regulatory approvals, environmental assessments and ongoing community engagement subject to Council's endorsement.

#### Actions and outcomes:

- Circulate workshop minutes and presentations via the City's website.
- Prepare a final summary outcomes report for Council and the broader community, incorporating all engagement findings.
- Schedule a Council briefing in Q1 2025 to present final project recommendations.
- Continue to keep key stakeholders and the community informed via the Project website.



## 3.2 Coastal Conversations

### 3.2.1 Tuesday, 10 September – Watermans Bay

**Attendance:** Approximately 7 community members attended.

**Key discussion themes:**

- More detailed information about the proposed adaptation options.
- Clarifications regarding the community engagement approach
- The City clarified who the chosen representatives were and how community members could contact them.
- Attendees were also encouraged to visit the City's website to share issues and ideas online.

### 3.2.2 Thursday, 26 September – Trigg

**Attendance:**

Approximately 10 community members remained after a coastal walk (which had around 40 participants) to specifically discuss coastal adaptation options.

**Key discussion themes:**

- Existing data, previous site assessments and explanations of sediment transport along the coastline.
- Adaptation options were reviewed in detail, including indicative costs, maintenance requirements and potential environmental impacts.
- Impact from adaptation options on surfing at Mettams Pool.

Image 6: Coastal Conversation at Trigg



## 3.3 Other Key Stakeholder Meetings

### Coastal Advisory Group – 29 November 2025

**Attendance:** 12 Coastal Advisory Group members, 10 City of Stirling representatives and the Project's Principal Coastal Engineer from M P Rogers.

**Key discussion themes:**

M P Rogers presented a comprehensive overview of the Project, including but not limited to:

- MCA outcome indicates that a standalone sand nourishment option met all objectives for both Mettams Pool and Watermans Bay, but a combination with alternative treatments such as reef structures are still under review
- project timeline and future consultation
- offshore sand sources
- upcoming sand nourishment at Mettams Pool.

*(Please refer to Appendices for Meeting Minutes.)*

## 4 Conclusion

Mettams Pool and Watermans Bay are coastal locations, cherished by the community for providing safe and accessible spaces for recreation and social connection while showcasing the natural beauty of Perth's coastline. The community's input throughout previous consultations and this project has underscored the importance of preserving these values while addressing the challenges posed by coastal erosion.

The engagement process ensured that a range of perspectives were considered, balancing technical, social, environmental and economic factors through the MCA process. The findings from previous community consultation and then more recently gathered during this project, were used to shape the MCA, including weightings for each criterion and sub-criteria. *(Please refer to the Appendices for the MCA.)*

Through the MCA process, sand nourishment clearly emerged as the most viable coastal adaptation option for both sites. Sand nourishment closely aligns with the project's success criteria by maintaining recreational opportunities, supporting environmental preservation, and offering a cost-effective approach over the long term. While some challenges remain, such as sourcing and placement of sand, these will be addressed in subsequent project phases.

Moving forward, the City of Stirling and its partners are committed to finalising the adaptation plans, resolving any outstanding concerns, and ensuring Mettams Pool and Watermans Bay remain vibrant and resilient coastal spaces for years to come.

The engagement methodology and tools were specifically selected to gather genuine sentiments from across the community, rather than opinions potentially shaped by highly vocal or large groups. By using online platforms and inclusive communication strategies, the project team reached a broad cross-section of the community. Meanwhile, feedback from the reference group, comprising a range of stakeholder interests, further

supported the development of adaptation measures that align with community aspirations and best-practice coastal management principles.

### 4.1 Next Steps

Following the outcomes of the Mettams Pool and Watermans Bay adaptation options MCA process, which concluded **sand nourishment** as the most suitable option for both locations, the next stages will include:

- Final reports
  - All technical assessments, community feedback and the MCA findings will be documented in detailed reports. These will outline the recommended adaptation options and address any identified gaps.
- Recommendations and planning
  - Recommendations will include options for sand sourcing (onshore and offshore) and placement methodologies to inform future implementation of sand nourishment.
  - Recommendations for any additional works or investigations required to refine the adaptation solutions will also be outlined.
- Benefits Distribution Analysis
  - The BDA process, managed separately by Aither, will evaluate how the costs and benefits of the recommended adaptation options are distributed across stakeholders.
- Council presentation
  - In Q1 2025, Council will review the project findings and recommendations. Their decisions will guide the project's next steps, including planning for implementation.
- Ongoing engagement and future works
  - Ongoing communications by the City will continue to keep the community informed of Council decisions, project outcomes and any required next steps.
  - Detailed designs and assessments will refine the preferred options and prepare them for further approvals and phased implementation.

## 5 Appendices

- A. Frequently Asked Questions
- B. Coastal Conversations Advertisements
- C. Mettams and Watermans Reference Group Terms of Reference
- D. Mettams and Watermans Reference Group Workshop Minutes
- E. Mettams and Watermans Reference Group Workshop Presentations
- F. Coastal Advisory Group Meeting Minutes

## A. Frequently Asked Questions

FAQs can be accessed on the City of Stirling's project web page: <https://www.stirling.wa.gov.au/city-and-council/shaping-our-city/search-all-projects/coastal-environment-and-management>.

# B. Coastal Conversations Advertisements



Shaping Our City

September 2024



### Coastal update for Mettams Pool and Watermans Bay

Thank you for your feedback on the Coastal Hazard Risk Management and Adaptation Planning (CHRMAP) report released in January 2023. In response to the report's recommendations, the City has been investigating the most effective ways to reduce erosion at these high-risk, high-value beaches.

The City is committed to hosting ongoing coastal conversations with residents and beachgoers to chat about their experiences of change along our coastline. Please join us at one of our upcoming Walking Together events or drop-in afterwards for a Coastal conversations to meet the City's Engineering Officers.

[Walking Together – Watermans Bay](#)  
Date Tuesday 10 September 2024  
Time 8.00am to 9.00am  
Meeting point Little Bay, 33 West Coast Drive, Watermans Bay  
**Followed by a Coastal conversation at Watermans Bay from 9.00am – 10.00am**

[Walking Together – Trigg](#)  
Date Thursday 26 September 2024  
Time 7.30am to 9.00am  
Meeting point Canteen Trigg, 364 West Coast Dr, Trigg WA 6029  
**Followed by a Coastal conversation at Trigg from 9.00am – 10.00am**

Can't make it? Visit the [project page](#) for a project overview.

If you have any queries, please contact the City on (08) 9205 8555 or visit [www.stirling.wa.gov.au/enquiries](http://www.stirling.wa.gov.au/enquiries)

Visit the project page

Connect with us



The City of Stirling makes every effort to ensure that the content of this newsletter is accurate, however the City makes no warranty as to its accuracy and does not assume any legal liability. The inclusion of a person, organisation, activity or link to another website in this newsletter in no way implies any form of endorsement by the City of Stirling.

The City of Stirling acknowledges the traditional custodians of this land, the Wadjak people of the Nyoongar nation, and pays respect to the Elders past, present and future for they hold the memories, the traditions, the culture and hopes of Aboriginal Australia.

No longer want to receive these emails? [Unsubscribe](#) or [Manage Preferences](#).

The City of Stirling 25 Cedric Street Stirling, WA 6021



## FLYERS





Locally-led  
Stirling

# Walking Together Local Convo

**Connect, share knowledge and explore local issues.**

The City of Stirling is committed to hosting a Local Convo in every suburb throughout 2024 to tap into locally-led knowledge about what is important locally.

To celebrate the 30 days of September the City is hosting a local walk in each of the City's 30 suburbs. Everyone is welcome, please join us to get to know your local area.

**Date:** Tuesday 10 September 2024  
**Time:** 8.00am to 9.00am  
**Meeting point:** Little Bay, 33 West Coast Drive, Watermans Bay

To learn more, visit [www.stirling.wa.gov.au/localconvo](http://www.stirling.wa.gov.au/localconvo) or contact the City on (08) 9205 8555 or 0436 961 888

To keep up to date with projects in your local area, please scan the QR code







Community Notice

# Coastal update for Mettams Pool and Watermans Bay

The City is committed to hosting ongoing coastal conversations with residents and beachgoers to chat about their experiences of change along our coastline and investigate the most effective ways to reduce the impact of erosion.

Please join us, after the Walking Together Local Convo

**Date:** Thursday 26 September  
**Time:** 9.00am to 10.00am  
**Meeting point:** Canteen Trigg, 364 West Coast Dr, Trigg

For more information, contact the City on (08) 9205 8555

To keep up to date with projects in your local area, please scan the QR code





WEBSITE

<https://www.stirling.wa.gov.au/city-and-council/news/managing-our-coastline-%E2%80%93-next-steps>

City of Stirling

City of Choice

Pay it

Report/request it

Contact us

City and Council

Resident Services

Community Support

Stirling Leisure

Attractions and Recreation

Waste and Environment

Developing Property

Business and Investment


Home

City and Council

News

Managing our coastline – next steps

# Managing our coastline – next steps



27 August 2024

In January 2023, the City released the Coastal Hazard Risk Management and Adaption Planning (CHRMAP) report.

In January 2023, the City released the Coastal Hazard Risk Management and Adaption Planning (CHRMAP) report. The report identified Mettams Pool and Watermans Bay as being at high risk of impact by coastal erosion.

The CHRMAP report recommended a detailed adaptation options assessment be undertaken to determine the best protection methods for our coastline at these high risk, high value beaches.

In response, a dedicated project team, including Elected Members and City and State representatives, and led by specialist coastal engineers, has been investigating the most effective ways to reduce the impact of erosion.

The coastal protection options being investigated include:

- Beach nourishment
- Groyne/headland enhancement
- Nearshore reefs
- Revetments/seawalls.

Key considerations for selecting the best option for each location are the community coastal values established through previous community consultation, environmental impact and economic factors including construction and ongoing maintenance costs.

## Coastal update for Mettams Pool and Watermans Bay

The City is committed to hosting ongoing coastal conversations with residents and beachgoers to chat about their experiences of change along our coastline and investigate the most effective ways to reduce the impact of erosion.

Please join us after the Walking Together Local Convo.

### Coastal update for Mettams Pool and Watermans Bay

**Date** Thursday 26 September

**Time** 9.00am to 10.00am

**Meeting point** Canteen Trigg, 364 West Coast Dr, Trigg.

### Coastal update for Mettams Pool and Watermans Bay

**Date** Tuesday 10 September

**Time** 9.00am to 10.00am

**Meeting point** Little Bay Cafe.

### Can't make it?

For more information, please contact Engineering Services on (08) 9205 8555 or submit an enquiry via [www.stirling.wa.gov.au/enquiry](https://www.stirling.wa.gov.au/enquiry).

< Back to news

Next article >

Share this page

f

in

X

## Coastal Conversations

The City is committed to hosting ongoing coastal conversations with residents and beachgoers to chat about their experiences of change along our coastline.

Please join us at one of our upcoming Walking Together events or drop-in afterwards for a Coastal conversations to meet the City's Engineering Officers:

Walking Together – Watermans Bay

**Date** Tuesday 10 September 2024

**Time** 8.00am to 9.00am

**Meeting point** Little Bay, 33 West Coast Drive, Watermans Bay

Followed by a Coastal conversation at Watermans Bay from 9.00am – 10.00am

Walking Together – Trigg

**Date** Thursday 26 September 2024

**Time** 7.30am to 9.00am

**Meeting point** Canteen Trigg, 364 West Coast Dr, Trigg WA 6029

Followed by a Coastal conversation at Trigg from 9.00am – 10.00am

## FACEBOOK



City of Stirling

6 September · 🌐

The first week of our Walking Together Local Convos is complete! Check out some of the pictures we've captured so far.

If you haven't already, join us throughout the 30 days of September as we host a walk in each of the City's 30 suburbs to hear your thoughts on your neighbourhood.

Next week, we'll be in the following suburbs:

- 📍 Balga - A park cleanup with the Community Safety team
- 📍 Watermans Bay - Chat about coastal erosion with the Engineering Officers
- 📍 Balcatta - A guided tour around Balcatta Recycling Centre
- 📍 Wembley Downs - Chat about the neighbourhood and learn the history of Luketina reserve
- 📍 Wembley - Walk part of the lake with City Officers
- 📍 Carine - Hosted alongside Carine Glades Parkrun
- 📍 Innaloo - A safety check hosted by the Community Safety team.

Find out which dates and times you can find us near you at

<https://cityofstirling.social/walkingtogether>



24

1 comment 1 share



City of Stirling

20 September · 🌐

Bring the kids along to our Walking Together Local Convos these school holidays!

If you haven't already, join us throughout the 30 days of September as we host a walk in each of the City's 30 suburbs to hear your thoughts on your neighbourhood.

This week, you can find us in the following suburbs:

- 📍 Nollamara - Bring your dog along to Des Penman Reserve to chat with City of Stirling Rangers about responsible pet ownership
- 📍 Osborne Park - Walk with us from the recently upgraded Dunholme Reserve to Crumbs in the Wall for a coffee
- 📍 Churchlands - Chat with a City of Stirling Planner about 'Density Done Well'
- 📍 Trigg - Come and learn about fishing traps at Trigg Beach from Nyoongar Yamatji Preston Culbong
- 📍 Joondanna - Join us at the new playground for a BBQ in the park.

Here are some pictures from our Local Walk at Karrinyup Shopping Centre earlier this week.

Find out which dates and times you can find us near you at

<https://cityofstirling.social/walkingtogether>



25

3 shares

## C. Stakeholder Reference Group Terms of Reference

# Mettams and Watermans Reference Group

## Terms of Reference

### 1. Name

The group will be known as the “Mettams and Watermans Reference Group” (‘reference group’).

### 2. Project Background

The City of Stirling, in partnership with the Department of Planning, Lands and Heritage and Department of Transport, has commenced a project with the objective of managing the impact of coastal hazard risks at Mettams Pool and Watermans Bay. The partnership organisations form a Project Working Team (PWT) to oversee the implementation of the project.

The project involves undertaking a concept adaptation options assessment for Mettams Pool and Watermans Bay, through a multi-criteria analysis (the Project) and serves as a follow-up to the Coastal Hazard Risk Management and Adaption Plan (CHRMAP) process for both locations. Considering the many common elements and synergy between the two locations, a single Concept Options Assessment Report and a recommended concept option is required to cover each location.

### 3. Purpose

The purpose of the Reference Group is to:

- Provide input and participate in the assessment process of coastal adaptation options to develop concepts for Mettams Pool and Watermans Bay.
- Promote the stakeholder and community engagement approach for the project to a wide range of stakeholders, including the broader community to generate understanding of the project.
- Provide a forum to promote a shared understanding and dialogue around issues and opportunities relating to:
  - current and future coastal hazard risks
  - community and cultural values
  - stakeholder priorities and key coastal infrastructure and assets at risk
  - the pathway on how the City may address coastal hazard risk over time.
- Consider a diverse range of stakeholder and community views to inform the development of recommendations and a concept plan to manage the impact of current and future coastal hazard risks at Mettams Pool and Watermans Bay.

### 4. Aims and Objectives

The reference group aims to take part in a coastal adaptation options assessment for Mettams Pool and Watermans Bay through participation in a multi-criteria analysis (the project). The reference group also aims to engage and foster community knowledge and involvement in coastal protection.

## 5. Membership

- The reference group comprises of members who are representative of their department, organisation or community group.
- Membership shall comprise of:
  - City of Stirling Officers
  - Ward Councillors
  - Department of Transport, PWT member
  - Department of Planning, Lands and Heritage
  - Department of Transport
  - MP Rogers and Associates, Principal Coastal Engineer
  - 361 Degrees, Facilitator, Director Communications and Engagement
  - Key community group representatives (up to 5)

With approval of the City and when relevant, specialist consultants or other stakeholders who are not members of the reference group may be invited to attend on behalf of or in addition to a member.

## 6. Role of the group

- Members are to participate in meetings with a view to achieving the purpose of the reference group.
- Promote the stakeholder and community engagement approach for the project to a wide range of stakeholders, including the broader community to generate understanding of the project.
- Receive information and updates, and provide feedback on the project including issues and opportunities relating to:
  - current and future coastal hazard risks
  - community and cultural values
  - stakeholder priorities and key coastal infrastructure and assets at risk
  - the pathway on how the City may address coastal hazard risk over time.

## 7. Facilitation of meetings

- 361 Degrees will facilitate the meetings, provide an agenda and keep clear notes to be registered in the City's record keeping system.
- The facilitator will circulate the agenda and any relevant meeting papers at least three days prior to a meeting.

## 8. Decision making

- The reference group has no decision-making authority.
- Majority group consensus is required for suggestions to be progressed on behalf of the group.



## 9. Frequency of meetings

- A minimum of four workshops will be held with provision for additional meetings in line with the project milestones.
- The timing of workshops will be outlined to members at the first meeting of the reference group.

## 10. Minutes

361 Degrees will keep clear notes at each meeting to be registered in the City's record keeping system and sent to all members before the next meeting date.

## 11. Term of group

- The reference group will disband upon completion of the project.
- The estimated completion date of the project is August 2024.



## **D. Stakeholder Reference Group Workshop Minutes**

# Mettams and Watermans Reference Group Coastal Adaptation Options Assessment Workshop 1 Minutes

Chairperson:	Claire Paddison
Date:	16 April 2024
Time:	13:00 – 15:00
Venue:	Challenger Meeting Room – Civic Centre, 25 Cedric Street, Stirling
Method of meeting:	Face to face

Name, Abbreviation	Title	Organisation
<b>Attendees</b>		
Trent Hunt (TH)	Project Director	M P Rogers & Associates
Brendan Garvey (BG)	Experienced Coastal Engineer	M P Rogers & Associates
Claire Paddison (CP)	Workshop Facilitator	361 Degrees
Natalie Akili (NA)	Principal Consultant	361 Degrees
Jon Offer (JO)	Special Projects & Support Engineer	City of Stirling
Frank Strever (FS)	Service Lead Transport	City of Stirling
Sam Bishop (SB)	Senior Policy Planner	Department of Planning, Lands and Heritage
Andrew Murphy (AM)		City of Stirling
Paul Giamov (PG)		City of Stirling
Jane Carter (JC)	Senior Engagement Officer	City of Stirling
Tony Krsticevic (TK)	Coastal Ward Councillor	City of Stirling
Sarah Leck (SL)	Principal Consultant BDA	Ricardo (Aither)
<b>Apologies</b>		
Fangjun Li (FL)	Manager Coastal Engineering & Management	Department of Transport
Rob Paparde (RP)	Coastal Ward Councillor	City of Stirling

Item	Description	Action	Responsibility
<b>1.0</b>	<b>Group Introductions and Governance</b>		
<b>1.1</b>	<b>Welcome, attendees, apologies and primary contacts</b>	Note	
<b>1.2</b>	<b>Overview of workshop series – purpose and process</b>	Note	
<b>1.3</b>	<b>Terms of Reference – review</b> Terms of References endorsed by the Group.	Note	
<b>1.4</b>	<b>Community members – selection process and timing</b>	Co-ordinate invites	JC

Community members to be invited to Workshops 3 and 4 by the City of Stirling. (Noting a Community Info Session to be co-ordinated prior to provide community members with Project context and background to date)

- Stirling Natural Environment Coast Care (SNECC)
- Trigg Surf Life Saving Club
- Surfing WA
- John Snook – City of Stirling’s Beach Services Manager

In addition recommend that the Project Team attend the following community group meetings to ensure other interested stakeholder groups are kept informed of the Project and process to date:

- Coastal Advisory Group
- Informal group who meet each morning at Mettams Pool gazebo

Community members to keep informed:

- Local schools

#### **DBCA – what stage should they be invited to participate**

DBCA will be invited to attend Workshops 3 and 4 as a visitor to the Reference Group.

Contact DBCA

TH

#### **1.6 Project communications – keeping the community informed**

Website and FAQs to be updated.

JC to co-ordinate, with support when required from CP and NA.

JC, CP, NA

## **2.0 Project Background**

### **2.1**

- An overview of the project background was provided (See attached presentation)
- The program was tabled, with the following points noted:
  - The timing of Workshop 1 was delayed, however there is a high likelihood that timing of Workshop 2 will make up for lost time.
- Previous assessments and existing data presented
- CHRMAP process and recommendations presented
- Current site conditions and key assets presented
- Key values about the coastline identified during community consultation for the

Note

CHRMAP include 'recreation' and 'natural environment' and will be included as criteria in the MCA.

- JC noted that Mettams is also a popular snorkelling location.

- 2.2** The adaptation options assessment process was presented, including the advantages and disadvantages of the four adaptation options identified in the CHRMAP: Note
- Beach / sand nourishment
  - Groynes/headland enhancement
  - Nearshore reefs / breakwaters
  - Revetments / seawalls

- 2.3 Benefits Distribution Analysis (BDA)**
- Overview of the BDA process was provided (See attached presentation) Note
  - Base case yet to be determined. Analysis will include the difference between the base case and the future adaptation rather than the change from the present day.
  - TH advised SL that visitor information collected during 2019 for Mettams Pool engagement could be used to inform BDA. Share visitor information. CP

- 2.4 Next Steps**
- Knowledge Summary and Gap Analysis Report to be finalised Note TH
  - Coastal process update underway
  - Updating model of sediment movement
  - Review provided surveys and data

### 3.0 Any Other Business

#### 3.1 Workshop 2

Workshop 2 will occur in approximately four weeks, with a date to be determined w/c 22/04/2024 following coastal processes update. Confirm date of Workshop 2 TH

#### 3.2 Other business

Presentations to be shared with the Group. Share meeting presentations with the Group TH and SL

# Mettams and Watermans Reference Group Coastal Adaptation Options Assessment Workshop 2 Minutes

Facilitator:	Claire Paddison
Date:	18 June 2024
Time:	13:00 – 15:00
Venue:	Challenger Meeting Room – Civic Centre, 25 Cedric Street, Stirling
Method of meeting:	Face to face

Name, Abbreviation	Title	Organisation
<b>Attendees</b>		
Trent Hunt (TH)	Project Director	M P Rogers & Associates
Brendan Garvey (BG)	Consultant	M P Rogers & Associates
Claire Paddison (CP)	Workshop Facilitator	361 Degrees
Natalie Akili (NA)	Principal Consultant	361 Degrees
Jon Offer (JO)	Special Projects & Support Engineer	City of Stirling
Frank Stever (FS)	Service Lead Transport	City of Stirling
Sam Bishop (SB)	Senior Policy Planner	Department of Planning, Lands and Heritage
Fangjun Li (FL)	Manager Coastal Engineering & Management	Department of Transport
Andrew Murphy (AM)	Director Infrastructure	City of Stirling
Paul Giamov (PG)	Manager Engineering Services	City of Stirling
Jane Carter (JC)	Senior Engagement Officer	City of Stirling
Sarah Leck (SL)	Principal Consultant BDA	Ricardo (Aither)
Abbie Rogers (AR)	Guest	UWA
<b>Apologies</b>		
Tony Krsticevic (TK)	Coastal Ward Councillor	City of Stirling
Rob Paparde (RP)	Coastal Ward Councillor	City of Stirling

Item	Description	Action	Responsibility
<b>1.0</b>	<b>Group Introductions and Governance</b>		
<b>1.1</b>	<b>Welcome and introduction to guests and observers</b>	Note	
<b>1.2</b>	<b>Workshop 1 Minutes and Actions</b>		
	The Minutes from MWRG Workshop 1 held on 16 April 2024 were accepted.	Note	



### 1.3 Workshop 3

- |  |   |                   |
|--|---|-------------------|
| <ul style="list-style-type: none"> <li>CP shared the selection criteria and recruitment process for community members to participate in MWRG Workshops 3 and 4 in assessing and selecting the final concept plan for each location.</li> </ul>   | Note  |                   |
| <ul style="list-style-type: none"> <li>It was agreed that the following community groups would be invited to select a representative to participate in Coastal Conversations and MWRG Workshops 3 and 4:               <ul style="list-style-type: none"> <li>Stirling Natural Environment Coastcare (SNEC)</li> <li>Swimming User Group at Mettams</li> <li>Coastal Whispers Facebook Group</li> <li>Swimming and General User Group at Watermans bay</li> <li>Surfing WA</li> <li>Perth NRM was also suggested for alternate reps if above options did not eventuate.</li> </ul> </li> </ul> | Send introductory correspondence to community groups.   | JC                |
|  | Meet with group representatives to provide an overview of the project and engagement process. | CP / NA / JO / TH |
| <ul style="list-style-type: none"> <li>John Snook has agreed to join the PWT, bringing his extensive community experience to the workshops, but emphasised that he will not serve as a formal community representative to avoid perceived conflict.</li> </ul>   | Note  |                   |
| <ul style="list-style-type: none"> <li>A Coastal Conversation at each project location was recommended to keep the broader community informed about the project.</li> </ul>  | Note  |                   |
| <ul style="list-style-type: none"> <li>It was suggested that Little Bay Bar &amp; Eatery be approached to get involved in Coastal Conversations. Options include advertising or hosting.</li> </ul>  | Contact Little Bay  | JC                |
| <ul style="list-style-type: none"> <li>TH presented an approximate project timeline. Key dates for stakeholder engagement to be confirmed:               <ul style="list-style-type: none"> <li><b>Coastal Conversations:</b> Early September Prior to Workshop 3</li> <li><b>Workshop 3:</b> Early September</li> <li><b>Workshop 4:</b> Early December</li> <li><b>Council Presentation:</b> Q1 2025</li> </ul> </li> </ul>  | Note  |                   |

## 2.0 Coastal Processes Review and Update

- |  |      |
|--|------|
| 2.1 The following topics were presented (refer to presentation): | Note |
|--|------|

- recap of MWRG Workshop 1
- overview of coastal processes review and update
- summary of coastal works in the area

## 2.2 **Outline of available information** Note

An outline of coastal monitoring, previous assessment, existing data and mapping was presented (refer to presentation).

## 2.3 **Summary of shoreline change and sediment movement** Note

A summary of vegetation line and shoreline change and sediment movement was provided (refer to presentation).

## 2.4 **Next Steps** Note

- Refer to presentation

## 3.0 **Adaptation Options**

### 3.1 **Outline of initial options** Note

The initial assessment process for adaptation options was presented, detailing the advantages and disadvantages of the four options identified in the CHRMAP:

- Beach / sand nourishment
- Groynes / headland enhancement
- Nearshore reefs / breakwaters
- Revetments/seawalls

TH reiterated that the adaptation options identified in the CHRMAP are intended for the medium term (50 years). The project aims to identify a suitable option that will last until 2070. Note

### 3.2 **Multi-criteria analysis process** Note

The MCA process will be used to assess adaptation options considering a range of criteria.

### 3.3 **Outline performance criteria and weightings**

- TH proposed categorising criteria into technical, social, environmental and economic, with weighted subcategories within each.
- Criteria and weightings to be reviewed and agreed on.
- Project objectives need to be clear to guide criteria and weightings.

Prepare a technical note to clarify project objectives, confirm the adaptation option timeframe, and present potential

- Options will be scored in later workshops against agreed criteria.
  - Separate MCAs for Mettams and Watermans need to be considered.
- weights and criteria for the MCA.

The project working team to review, finalise and agree upon this document before Workshop 3.

ALL

### 3.4 Next Steps

- Complete wave modelling to obtain design conditions at Watermans and Mettams
  - Develop coastal adaption concepts to manage impacts
  - Estimate residual impacts of the coastal adaption concepts based on:
    - Conceptual sediment models
    - Wave modelling
    - Engineering experience
    - Background information
- Note

## 4.0 Any Other Business

### 4.1 Coastal Values

AR provided an overview of two projects being undertaken by UWA Centre for Environmental Economics & Policy was provided (see attached presentation):

- Project 1: Coastal Values Community Survey
- Project 2: Coastal Benefit-Cost Analysis Tool

Note

TH raised a question about how the project team will handle potential conflicting responses from the community.

### 4.2 Benefits Distribution Analysis (BDA)

- SL will complete a method paper based on Workshops 1 and 2 and send it to JO.
  - Workshop with the project team to discuss and agree on the conceptual approach to be undertaken in late June/early July.
  - Consultation to be undertaken with key internal stakeholders in July to obtain additional data for BDA.
- SL to provide a broad outline of the BDA process in Workshop 3.
- SL

- Detailed analysis to be in July/August for the base case.

#### **4.3 Next Steps**

- Begin correspondence with community groups.
- Meeting with the ward councillors to communicate the content/outcomes of Workshop 2 prior to Workshop 3.
- Circulate MCA approach and summary of work to date.
- Confirm Stirling as one of the Perth Metro case studies for AR's Coastal Values Community Survey. JO is to be AR's contact.
- Workshop 3 is tentatively scheduled for early September.

JC/CP/NA

JC/CP/NA

TH/JO

TH

AR/JO

# Mettams and Watermans Reference Group Coastal Adaptation Options Assessment Workshop 3

## Minutes

Facilitator:	Claire Paddison
Date:	24 October 2024
Time:	13:00 – 15:00
Venue:	Stirling Room – Civic Centre, 25 Cedric Street, Stirling
Method of meeting:	Face to face

Name, Abbreviation	Title	Organisation
<b>Attendees</b>		
Trent Hunt (TH)	Project Director	M P Rogers & Associates
Brendan Garvey (BG)	Consultant	M P Rogers & Associates
Claire Paddison (CP)	Workshop Facilitator	361 Degrees
Natalie Akili (NA)	Principal Consultant	361 Degrees
Jon Offer (JO)	Special Projects & Support Engineer	City of Stirling
Frank Stever (FS)	Service Lead Transport	City of Stirling
Michaela Pilosoff (MP)	Senior Policy Planner	Department of Planning, Lands and Heritage
Fangjun Li (FL)	Manager Coastal Engineering & Management	Department of Transport
Paul Giamov (PG)	Manager Engineering Services	City of Stirling
Jane Carter (JC)	Senior Engagement Officer	City of Stirling
Renae Henry (RH)	Strategic Community Engagement Officer	City of Stirling
Sarah Leck (SL)	Principal Consultant BDA	Ricardo (Aither)
Tony Krsticevic (TK)	Coastal Ward Councillor	City of Stirling
John Snook (JS)	Team Leader – Beach Services	City of Stirling
Sarah Leck (SL)	Principal Consultant BDA	Ricardo (Aither)
Jennie Vanzoon (JV)	Community Representative	Coast Whispers Facebook Group
Peter Leigh (PL)	Community Representative	Watermans Bay Swimming Group
Sam Trimboli (ST)	Community Representative	Mettams Pool Swimming Group
Sue Plunkett (SP)	Community Representative	Stirling Natural Environment Coast Care
<b>Apologies</b>		
Andrew Murphy (AM)	Director Infrastructure	City of Stirling





in how each beach is used by the community.

### 3.0 Coastal Processes Review and Update

The following topics were presented (refer to presentation):

Note

- recap of MWRG Workshop 1 and 2
- recap of coastal processes review and update
- success criteria and project objectives
- sediment movement
- wave modelling and design conditions

### 4.0 Conceptual Adaptation Options

TH presented the background to adaptation options.

Note

An outline of four conceptual options under consideration for further consideration at Mettams Pool and Watermans Bay were presented:

- Sand nourishment
- Seawalls
- Groynes
- Offshore headlands
- Reff enhancement

TH presented each concept option for Mettams Pool and Watermans Bay in detail including:

- Pros, cons and considerations (including indicative costs) of each concept option for a life of 50 years.
- Visual representations of each option, including conceptual measurements and renders, noting detailed design is to be determined at a later stage in the process once an adaptation option has been selected.

### 5.0 Multi-criteria analysis process

TH presented an overview of the MCA process that will be used to assess adaptation options considering a range of performance criteria including:

Note

- Technical
- Social
- Environmental
- Economic

Weightings for each criteria were presented for discussion and input from the group. Feedback from the group indicated it would be valuable to experiment with different weightings to test different scenarios and how that would affect the recommended adaptation option. (e.g. Weightings could be Tech 25%, Social 25%, Enviro 25%, Econ 25% OR Tech 20%, Social 30%, Enviro 30%, Econ 20%)

Experiment with different weightings of the criteria in MCA.

TH

## 5.0 Any Other Business

### 5.1 Next Steps

- Minutes and presentation will be circulated to the reference group and published on the City's website.
- Between now and the next workshop, TH will apply the MCA across all adaptation options for Mettams and Watermans , with consideration to different criteria weightings.
- Results of MCA will be presented at Workshop 4.
- The community representatives are encouraged to reach out to their groups, share the information from this workshop, and provide any feedback or queries back to the city.
- The next workshop is scheduled for Wednesday 11 December.

JC / NA

TH

# Mettams and Watermans Reference Group Coastal Adaptation Options Assessment Workshop 4 Minutes

The City of Stirling acknowledges the traditional custodians of this land, the Wadjak people of the Nyoongar nation, and pays respect to the Elders past, present and future for they hold the memories, the traditions, the culture and hopes of Aboriginal Australia.

Facilitator:	Claire Paddison
Date:	11 December 2024
Time:	13:00 – 15:00
Venue:	Stirling Room – Civic Centre, 25 Cedric Street, Stirling
Method of meeting:	Face to face

## Purpose of the meeting

To present and discuss the concept adaptation options for Mettams & Watermans and work through the impacts, considerations and multi-criteria analysis to assess each site.

Name, Abbreviation	Title	Organisation
<b>Attendees</b>		
Trent Hunt (TH)	Project Director	M P Rogers & Associates
Brendan Garvey (BG)	Consultant	M P Rogers & Associates
Claire Paddison (CP)	Workshop Facilitator	361 Degrees
Natalie Akili (NA)	Principal Consultant	361 Degrees
Jon Offer (JO)	Special Projects & Support Engineer	City of Stirling
Frank Stever (FS)	Service Lead Transport	City of Stirling
Sam Bishopp (SB)	Senior Policy Planner	Department of Planning, Lands and Heritage
Michaela Pilosoff (MP)	Senior Policy Planner	Department of Planning, Lands and Heritage
Fangjun Li (FL)	Manager Coastal Engineering & Management	Department of Transport
Andrew Murphy (AM)	Director Infrastructure	City of Stirling
Paul Giamov (PG)	Manager Engineering Services	City of Stirling
Jane Carter (JC)	Senior Engagement Officer	City of Stirling
Rob Paparde (RP)	Coastal Ward Councillor	City of Stirling
Tony Krsticevic (TK)	Coastal Ward Councillor	City of Stirling
Sarah Leck (SL)	Principal Consultant BDA	Ricardo (Aither)
Mark Lane (ML)	Community Representative	Surfing WA
Peter Leigh (PL)	Community Representative	Watermans Bay Swimming Group

Sam Trimboli (ST)	Community Representative	Mettams Pool Swimming Group
Sue Plunkett (SP)	Community Representative	Stirling Natural Environment Coast Care
<b>Apologies</b>		
Jennie Vanzoon (JV)	Community Representative	Coast Whispers Facebook Group
Renae Henry (RH)	Strategic Community Engagement Officer	City of Stirling
John Snook (JS)	Team Leader – Beach Services	City of Stirling

Item	Description	Action	Responsibility
<b>1.0</b>	<b>Group Introductions and Governance</b>		
<b>1.1</b>	<b>Welcome and introduction to guests and observers</b>	Note	
<b>1.2</b>	<b>Workshop 3 Minutes and Actions</b>		
	<ul style="list-style-type: none"> <li>The minutes from MWRG Workshop 3, held on 24 October 2024, were accepted.</li> </ul>	Note	
	<ul style="list-style-type: none"> <li>A reminder was provided for outstanding actions.</li> </ul>	<ul style="list-style-type: none"> <li>Provide results/graphs from 2019 community survey to assist in how each beach is used by the community.</li> </ul>	JC / JO
		<ul style="list-style-type: none"> <li>Workshop 3 Minutes and Presentation to be recirculated.</li> </ul>	JC / JO
		<ul style="list-style-type: none"> <li>Link to the project web page to be circulated.</li> </ul>	JC / JO
<b>1.3</b>	<b>Stakeholder Engagement Summary</b>		
	<ul style="list-style-type: none"> <li>JC shared an update on stakeholder engagement since Workshop 3: <ul style="list-style-type: none"> <li>Correspondence between the City and each party individually: North Coast Community, UWA Oceans Institute and a Watermans Bay resident.</li> </ul> </li> </ul>	Note	



- Meeting with the Coastal Advisory Group hosted by the City with TH in attendance to present the project and answer questions.

## 2.0 Assessment of Adaptation Options and Recommendations

TH provided a recap of information presented in MRWG Workshops 1, 2 and 3 (refer to presentation):

Note

- assets at risk
- coastal processes review and update
- sediment movement
- wave modelling and design conditions
- success criteria and project objectives
- concept adaptation options for Mettams Pool and Watermans Bay
- MCA criteria, basis and weightings

### 2.1 Mettams Pool

- Results of MCA process presented (refer to presentation):
  - Outcome indicates that **sand nourishment** is the preferred coastal adaptation option for Mettams Pool.

### 2.2 Watermans Bay

- Results of MCA process presented (refer to presentation):
  - Outcome indicates that **sand nourishment** is the preferred coastal adaptation option for Watermans Bay.

## 3.0 Next Steps

### 3.1 Project Scope

- |   |         |
|---|---------|
| ○ Minutes and presentation will be circulated to the reference group and published on the City's website.       | JC / NA |
| • Reports summarising all project work will be produced.  | TH      |
| • Recommendations for City Officers will outline next steps, key considerations and any gaps or required works. | TH      |
| ○ Aither's work through BDA will proceed separately.  | SL      |
| ○ A communications and consultation summary report will be prepared.  | NA / CP |

- The outcomes will be presented to Council in Q1 2025 for consideration.

TH / CoS rep  
tbc

- **Future Works**

- Progress will depend on Council resolutions/decisions.
- Ongoing community consultation on outcomes and recommendations.
- Address any gaps or recommend additional investigations.
- Conduct detailed design and assessment to refine the preferred option.
- Undertake further investigations, approvals and implementation as needed.

#### **4.0 Any Other Business**

- |            |  |      |
|------------|--|------|
| <b>4.1</b> | <ul style="list-style-type: none"><li>• AM thanked the MWRG for being involved in the process, with special thanks to community representatives.</li></ul> | Note |
|------------|--|------|

## E. Stakeholder Reference Group Workshop Presentations

Please use the links below to access relevant Mettams and Watermans Reference Group Workshop presentations on the City of Stirling's project page.

- Workshop 1  
<https://www.stirling.wa.gov.au/awcontent/Web/Documents/City%20and%20Council/Shaping%20our%20City/Projects%20and%20infrastructure/Mettams-Watermans-Reference-Group-Coastal-Adaptation-Options-Workshop-1.pdf>
- Workshop 2  
<https://www.stirling.wa.gov.au/awcontent/Web/Documents/City%20and%20Council/Shaping%20our%20City/Projects%20and%20infrastructure/Mettams-Watermans-Reference-Group-Coastal-Adaptation-Options-Workshop-2.pdf>
- Workshop 3  
<https://www.stirling.wa.gov.au/awcontent/Web/Documents/City%20and%20Council/Shaping%20our%20City/Projects%20and%20infrastructure/Mettams-Watermans-Reference-Group-Coastal-Adaptation-Options-Workshop-3.pdf>
- Workshop 4  
<https://www.stirling.wa.gov.au/awcontent/Web/Documents/City%20and%20Council/Shaping%20our%20City/Projects%20and%20infrastructure/Mettams-and-Watermans-Reference-Group-Coastal-Adaptation-Options-Workshop-4.pdf>

## **F. Coastal Advisory Group Meeting Minutes**

# Coastal Advisory Group Minutes

The City of Stirling acknowledges the traditional custodians of this land, the Wadjak people of the Nyoongar nation, and pays respect to the Elders past, present and future for they hold the memories, the traditions, the culture and hopes of Aboriginal Australia

Meeting:	Coastal Advisory Group – Meeting #3
Chairperson:	Michael Quirk – Director Community Development
Date:	Thursday 28 November 2024
Start Time:	8.45am
Venue:	Surfing WA

Name	Title	Organisation
<b>Attendees</b>		
Cr Tony Krsticevic	Coastal Ward Councillor	City of Stirling
Cr Rob Paparde	Coastal Ward Councillor	City of Stirling
Michael Quirk	Director Community Development	City of Stirling
Frank Strever	Service Lead Transport	City of Stirling
Cheyne Cameron	Manager Recreation & Leisure Services	City of Stirling
Ian Hunter	Manager Parks & Environment	City of Stirling
James Duncan	Strategic Projects Advisor	City of Stirling
Gabriela Eiris	Service Lead Trees & Ecology	City of Stirling
James Murphy	Head of Community Engagement	City of Stirling
Renae Henry	Strategic Community Engagement Officer	City of Stirling
Trent Hunt	Principal Coastal Engineer	M P Rogers & Associates
Cas Ryan	President	Trigg Island Surf Life Saving Club
Dan Walton	Representative	Trigg Island Surf Life Saving Club
Paul Lynch	Representative	Trigg Island Surf Life Saving Club
Clint McGhie	President	Scarboro Surf Life Saving Club
Mark Lane	Chief Executive Officer	Surfing WA
Katja Verreydt	Community & Membership	Surfing WA
Mitch Loan	Representative	Trigg Point Boardriders
Jono Culley	Representative	Trigg Junior Boardriders
Jay Laurie	Representative	Trigg Junior Boardriders
Katherine Stinson	Representative	Scarborough Beach Association
Richard Curry	Representative	Richard Curry Consulting
Simon Foster	Representative	North Coast Community

<b>Apologies</b>		
Paul Giamov	Manager Engineering Services	City of Stirling



## Agenda

Description	Discussions	Actions arising
Welcome	City and community representatives welcomed. It was explained the hiatus between meetings was due to a Community Engagement review including investigating roles of advisory groups.	
<b>Agenda Item 1: Topic submissions by representatives</b>	<p>Stakeholders invited to raise key issues to help inform agendas in the new year. They included (but weren't limited to):</p> <ul style="list-style-type: none"> <li>• Sand nourishment, erosion, CHRMAP recommendations, protection of surfing and natural amenities</li> <li>• Trigg Island Surf Life Saving Club looking into redevelopment</li> <li>• Beach access difficulties due to sand build-up</li> <li>• Scarborough parking issues (wayfinding underway, updates to be brought to group)</li> <li>• Hierarchy of advisory/reference groups (plan is CAG is main engagement group)</li> <li>• Overflowing bins outside Canteen</li> <li>• Fishing in Mettams tidal pool (issue already referred to Director Infrastructure)</li> <li>• Strengthening relationships between City and boardrider clubs (Manager Rec &amp; Leisure to exchange details)</li> <li>• Boardwalk's potential to move pathway users away from Highway</li> <li>• Pedestrian safety in general</li> </ul> <p>All City Officers provided brief summaries of roles. It was noted the potential for more representation of an environmental nature.</p> <p>Q&amp;A then followed, including (but not limited to):</p> <ul style="list-style-type: none"> <li>• Q: How will you keep us informed? A: Aim is to send out agendas in advance to provide time for consideration before meetings taking place to set schedule.</li> <li>• Q: Best time for meetings? A: Afternoons after work the preference, otherwise start or end of days.</li> <li>• Q: Will terms of reference change a lot? A: No, mostly just administrative.</li> </ul>	<ol style="list-style-type: none"> <li>1. Formalise contacts list so CAG members can contact City Officers directly as issues arise.</li> <li>2. Key issues to be listed and reviewed for discussion/presentation at future Advisory Group Meetings.</li> <li>3. Environmental representation to be considered as part of Terms of Reference review.</li> <li>4. Schedule for 2025 Advisory Group Meetings to be set in advance.</li> </ol>

	<ul style="list-style-type: none"> <li>• Q: Is there coastal collaboration between LGAs? A: Yes, the Northern Beaches Alliance is working together.</li> <li>• Q: What's with the parking signage/cameras? Wayfinding and allowing for fines in the post rather than windscreen.</li> </ul>	
<b>Agenda Item 2: Coastal Adaptations &amp; Options Assessment</b>	<p>Presentation by Trent Hunt from M P Rogers &amp; Associates plus group discussion, including (but not limited to):</p> <ul style="list-style-type: none"> <li>• CHRMAP confirmed Mettams and Watermans losing lots of sand, assets including West Coast Drive at risk, set out criteria. One option on its own meets all: sand nourishment. Others still considered including reef. Concerns raised the criteria limits options. Wrapping up current process by early next year ahead of another consultation phase.</li> <li>• Offshore sand sources a work in progress.</li> <li>• Plans for another sand nourishment at Mettams in March.</li> <li>• There is provision for state and federal funding for coastal management and lobbying ongoing.</li> <li>• Representatives want notice and data on sand sourcing and nourishment.</li> </ul>	<p>5. Sand sourcing and nourishment info to be made available to representatives ahead of time.</p>
Next meeting:	<p>Intention for better structure, more focus on issues raised, set schedule of meetings.</p> <p>CAG will convene on the following dates in 2025:</p> <ul style="list-style-type: none"> <li>• 19 February 2025</li> <li>• 14 May 2025</li> <li>• 20 August 2025</li> <li>• 12 November 2025</li> </ul>	February 2025

## Actions arising

#	Item	Responsible officer/s	Comment
1.	Formalise contacts list so CAG members can contact City Officers directly as issues arise.	Community Engagement Team	February 2025
2.	Review membership to ensure environmental representation as part of the Terms of Reference review.	Community Engagement Team	February 2025
3.	Sand sourcing and nourishment info to be made available to representatives ahead of time.	Service Lead Transport, Community Engagement Team	March 2025 (in advance of next sand nourishment when confirmed)
4.	Formalise contacts list so CAG members can contact City Officers directly as issues arise.	Community Engagement Team	February 2025
5.	Key issues to be listed and reviewed for discussion/presentation at future Advisory Group Meetings.	Community Engagement Team	February 2025
7.	Schedule for 2025 Advisory Group Meetings to be set in advance.	EA Community Development	ASAP
8.	Sand sourcing and nourishment info to be made available to representatives ahead of time.	Service Lead Transport Engineering Services	February 2025